

Data reconciliation and optimal operation of a catalytic naphtha reformer

Tore Lid
Statoil Mongstad
5954 Mongstad

Sigurd Skogestad *
Department of Chemical Engineering
Norwegian Univ. of Science and Technology (NTNU)
Trondheim, Norway

September 11, 2007

*To whom all correspondence should be addressed (e-mail:skoge@chemeng.ntnu.no)

Abstract

The naphtha reforming process converts low-octane gasoline blending components to high-octane components for use in high-performance gasoline fuels. The reformer also has an important function as the producer of hydrogen to the refinery hydrotreaters. A process model based on a unit model structure, is used for estimation of the process condition using data reconciliation. Measurements are classified as redundant or non redundant and the model variables are classified as observable, barely observable or unobservable. The computed uncertainty of the measured and unmeasured variables shows that even if a variable is observable it may have a very large uncertainty and may thereby be practically unobservable. The process condition at 21 data points, sampled from two years of operation, was reconciled and used to optimize the process operation. There are large seasonal variations in the reformer product price and two operational cases are studied. In case 1, the product price is high and throughput is maximized with respect to process and product quality constraints. In case 2, the product price is low and the throughput is minimized with respect to a low constraint on the hydrogen production. Based on the characteristics of the optimal operation, a "self optimizing" control structure is suggested for each of the two operational cases.

1 Introduction

The naphtha reforming process converts low-octane gasoline blending components to high-octane components for use in high-performance gasoline fuels. "Octane" or, more precisely the octane number, is the measure or rating of the gasoline fuels antiknock properties. "Knocking" occurs in an engine when the fuel self detonates due to high pressure and temperature before it is ignited by the engine spark. Permanent damage of the engine cylinder and piston parts is a likely result of persistent "knocking". The most common measure of the octane number is the RON (Research Octane Number). By definition iso-octane (2,2,4 trimethyl pentane) is given an octane number (RON) of 100 and n-heptane an octane number of 0. A fuel with 95 RON has, by use of this measure, equal anti knock properties to a mixture of 95% of iso-octane and 5% n-heptane.

A simplified process model of a semiregenerative catalytic naphtha reformer, involving five pseudo components, was presented by Smith (1959) and validated against plant data. The same model was used in Bommannan et al. (1989), where reaction parameters were estimated from two sets of plant data, and in Lee et al. (1997) where a process with continuous catalyst regeneration was modeled. In all three cases above, good agreement with plant data was reported. These models are used for simulation and design purposes except in Taskar and Riggs (1997) where optimal operation during a catalyst cycle, is considered. Taskar and Riggs (1997) developed a more detailed model of a semiregenerative catalytic naphtha reformer, involving 35 pseudo components. They claimed that the simplified model is an oversimplification of the process but no details of the practical consequences of the discrepancies were presented.

In this paper the simplified model of Smith (1959) is used for modeling a catalytic naphtha reformer with continuous catalyst regeneration. The model uses the unit model structure of Lid and Skogestad (2007). Scaling is applied to the process model variables and equations to improve its numerical properties. The process model is fitted to 21 data sets from the naphtha reformer at the Statoil Mongstad refinery. These data were collected in a two year period and include feed and product analysis and process measurements. The current state of the process is estimated using data reconciliation (Tjoa and Biegler, 1991), where redundancy of measurements, observability of variables and uncertainty of the estimate are examined. The same model is also used for computation of optimal operation and economical analysis of operational cases. Based on this analysis, a model predictive controller (MPC) for "optimal" operation of the process is suggested.

2 Data reconciliation

In this section, we summarize the equations used in this paper. For more details, it is referred to the references and the thesis of Lid (2007).

Data reconciliation is used to estimate the actual condition of the process and is here obtained as the solution of

$$\begin{aligned} & \min_z J(y_m, z) \\ \text{s.t.} \quad & f(z) = 0 \\ & A_r z = b_r \\ & z_{r \min} \leq z \leq z_{r \max} \end{aligned} \tag{1}$$

where $J(y_m, z)$ is the objective function for data reconciliation, $f(z) = 0$ represents the process model, $A_r z = b_r$ is used to specify known values and $z_{r \min} \leq z \leq z_{r \max}$ physical constraints. The n_y measured values are collected in the measurement vector y_m .

If the measurement error is normally distributed $\mathcal{N}(\mu, \sigma)$ and has a zero mean measurement error ($\mu = 0$). The maximum likelihood estimate is achieved using a quadratic objective function

$$J_G = e^T Q e \tag{2}$$

where $e = y_m - y$, and the measured variables

$$y = U z \tag{3}$$

represent the estimated values of the measurements y_m . The measurement mapping matrix U has $U(j, i) = 1$ if variable j is measured and the measured value is located in $y_m(i)$, The weighting matrix Q is the inverse of the measurement error covariance matrix Σ_m . If the measurement error is normally distributed $\mathcal{N}(\mu, \sigma)$ with nonzero mean μ the quadratic objective function will result in a biased estimate. In data reconciliation, a mean measurement error $\mu \neq 0$, is called a gross error.

In this work, the Combined Gaussian distribution of Tjoa and Biegler (1991) is used to handle data sets with gross errors, see figure 1.

The Combined Gaussian distribution is described by the following objective function

$$J_{CG} = - \sum_{i=1}^{n_y} \ln \left[(1 - p) \exp \left(-\frac{1}{2} \frac{e(i)^2}{\sigma_i^2} \right) + \frac{p}{b} \exp \left(-\frac{1}{2} \frac{e(i)^2}{\sigma_i^2 b^2} \right) \right] \tag{4}$$

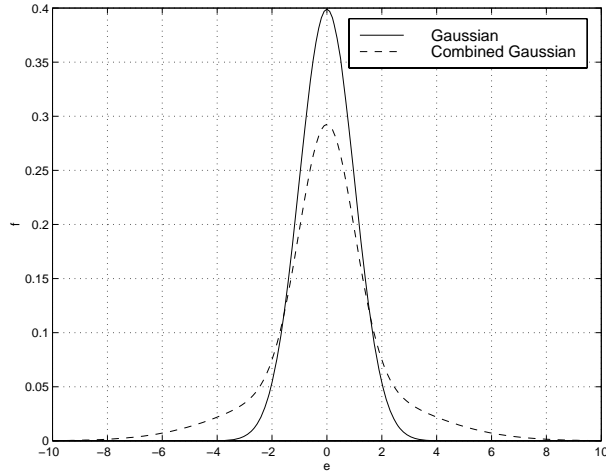


Figure 1: Gaussian and combined Gaussian frequency function. The standard deviation $\sigma = 1$, probability for an outlier $p = 0.4$ and ratio of the standard deviations $b = 3$.

which has two adjustable parameters, p and b . In summary, data reconciliation is based on the Combined Gaussian objective (4), whereas the Gaussian objective (2) is used for analysis of the uncertainty in the estimate.

3 Scaling of the variables and model

To improve the numerical properties, the process model $f(z) = 0$ and linear constraints $Az = b$ are scaled according to the scaling procedure proposed in Lid and Skogestad (2007).

First, every equation is paired with one variable. The equation-variable pairing may be regarded as "equation i is used for computation of the value of variable j ". It is written in a matrix P , where $P(i, j) = 1$ if variable j is paired with equation number i . All other values equal zero. This is done both for the nonlinear process model $f(z)$ and the linear constraints A .

Second, all variables z are scaled $z = S_v \bar{z}$, such that the scaled variable \bar{z} has a value close to one. S_v is a $n_z \times n_z$ fixed diagonal scaling matrix.

Finally, the equation scaling matrices of the process model and the linear

constraints, S_f and S_l , are computed as

$$S_f = \left| \left[I \times \left(\frac{\partial f(z)}{\partial z} S_v P_{nl}^T \right) \right]^{-1} \right| \quad (5)$$

$$S_l = \left| [I \times (A S_v P_l^T)]^{-1} \right| \quad (6)$$

where \times denotes element by element multiplication so that S_f and S_l are diagonal matrices. The scaled model is written

$$\tilde{f}(\tilde{z}) = 0 \quad (7)$$

$$\tilde{A}\tilde{z} = \tilde{b} \quad (8)$$

where $\tilde{z} = S_v^{-1}z$, $\tilde{f}(\tilde{z}) = S_f f(S_v \tilde{z})$, $\tilde{A} = S_l A S_v$, and $\tilde{b} = S_l b$. If the model equations are properly scaled, the condition number of

$$\tilde{H} = \begin{bmatrix} \frac{\partial \tilde{f}(\tilde{z})}{\partial \tilde{z}} \\ \tilde{A} \end{bmatrix} \quad (9)$$

should be reasonable low ($< 1 \times 10^6$).

It should be noted that the variable scaling has some pitfalls. A simple input-output mass balance of a two component process stream is used as an example. The resulting model has six variables and three equations. To solve the model three variable values have to be specified. The model equations are the component mass balance and sum of outlet molar fractions. The equations are written as

$$f(z) = \begin{bmatrix} \mathbf{x}_1 F_1 - \mathbf{x}_2 F_2 \\ \sum_j \mathbf{x}_2(j) - 1 \end{bmatrix} = 0 \quad (10)$$

where the variable vector is $\mathbf{z} = [\mathbf{x}_1^T F_1 \mathbf{x}_2^T F_2]^T$. Specifying the feed composition $\mathbf{x}_1 = [0.5 \ 0.5]^T$ and the feed flow $F_1 = 1$ gives

$$A = \begin{bmatrix} 1 & 0 & 0 & 0 & 0 & 0 \\ 0 & 1 & 0 & 0 & 0 & 0 \\ 0 & 0 & 1 & 0 & 0 & 0 \end{bmatrix} \quad \text{and} \quad \mathbf{b} = \begin{bmatrix} 0.5 \\ 0.5 \\ 1 \end{bmatrix} \quad (11)$$

and the first order derivatives become

$$H = \begin{bmatrix} \frac{\partial f(z)}{\partial z} \\ A \end{bmatrix} = \begin{bmatrix} F_1 & 0 & x_1(1) & F_2 & 0 & x_2(1) \\ 0 & F_1 & x_1(2) & 0 & F_2 & x_2(2) \\ 0 & 0 & 0 & 1 & 1 & 0 \\ 1 & 0 & 0 & 0 & 0 & 0 \\ 0 & 1 & 0 & 0 & 0 & 0 \\ 0 & 0 & 1 & 0 & 0 & 0 \end{bmatrix} \quad (12)$$

The condition number of H is in this case ≈ 5.3 . If the feed composition specifications are changed to $\mathbf{x}_1 = [0.01 \ 0.99]^T$ the condition number of H is ≈ 6.7 . This shows that small values of the variables $x_1(1)$ and $x_2(1)$ are not a problem. However, if variable scaling is added, such that the scaled variables have a value of ≈ 1 the condition number of \tilde{H} is $\approx 7.4 \times 10^3$. That is, we have by improper variable scaling created an "ill conditioned" model.

On the other hand, if the molar flow F_1 is increased from 1 to 100 the condition number of H is $\approx 2.8 \times 10^4$. If the flow variables are scaled such that the scaled variable has a value ≈ 1 , and the equations are scaled according to the procedure above, the condition number of \tilde{H} reduces to ≈ 8.2 . The "rule of thumb", which was applied to this model, is: be careful by assigning large variable scaling factors to variables with values close to zero. Typically, all molar fractions are in $[0 \ 1]$ and by definition close to one and are scaled by a factor equal to one.

Scaling the reformer model according to the procedure above reduces the condition number of H from 2.3×10^{12} to 3.6×10^4 . The maximum absolute value of the elements in H is reduced from 4.8×10^5 to 7.6 and all values of \tilde{H} corresponding to the equation-variable pairing has a value equal to one.

4 Case study: Naphtha reformer

4.1 Process description and model structure

The feed to the naphtha reformer is a crude oil fraction from the refinery crude unit with a boiling range of $\approx 100\text{--}180^\circ\text{C}$ and a density of $\approx 763\text{kg/m}^3$. The products are high-octane naphtha, also called "reformate", "gas" ($C_2 - C_4$) and hydrogen. The increase in octane number is due to a conversion of paraffins and naphthenes to aromatics. The amount of catalyst in the four reactors is approximately in the ratio 1:1:2:3. The reactor inlet temperatures are in the range 770K-800K.

The overall reaction is endothermic and there is a significant temperature drop from the inlet to the outlet of the reactors. In order to compensate for this temperature drop, the reactor is separated into four sections with intermediate reheating, see figure 2. The fresh feed is mixed with hydrogen rich recycle gas and is preheated in the reactor effluent heat exchanger (E1). The feed is further heated in heater no. 1 (H1) before it enters reactor no. 1 (R1), and so on. The hot reactor product enters the feed pre-heater (E1) and is further cooled with cooling water before it enters the separator. Hydrogen

rich gas is compressed, except for a small purge stream, and recycled. The liquid product from the separator (D1), a mixture of reformat and gas, is separated in a downstream distillation column.

The components in the process are lumped into five pseudo components. These are hydrogen (H), "Gas" $C_2 - C_4$ (G), paraffins (P), naphthenes (N) and aromatics (A). A description of the thermodynamic properties of these pseudo components can be found in Lid (2007). The justification for this simplification is that the carbon number of the molecules does not change in the two reactions (13) and (14). For example, a C_7 naphthene is converted to a C_7 aromatic and a C_7 paraffin is converted to a C_7 naphthene.

This conversion is described by four main reactions (Smith, 1959):

1. Dehydrogenation of naphthenes to aromatics
2. Dehydrocyclization of paraffins to naphthenes
3. Hydrocracking of naphthenes to light ends
4. Hydrocracking of paraffins to light ends

The simplified naphtha reforming kinetics are written as



with the stoichiometric matrix \mathbf{N}

$$\mathbf{N} = \begin{bmatrix} 3 & 0 & 0 & -1 & 1 \\ -1 & 0 & 1 & -1 & 0 \\ -2 & 2 & 0 & -1 & 0 \\ -1 & 2 & -1 & 0 & 0 \end{bmatrix} \quad (17)$$

where the columns refer to the components H, G, P, N and A. The reaction rates are,

$$r_1 = k_{f_1} p_N - k_{r_1} p_A p_{H_2}^3 \quad (18)$$

$$r_2 = k_{f_2} p_N p_{H_2} - k_{r_2} p_P \quad (19)$$

$$r_3 = k_{f_3} p_N / p \quad (20)$$

$$r_4 = k_{f_4} p_P / p \quad (21)$$

where p_x is the partial pressure of component x and p is the total reactor pressure.

For the forward and reverse rate constants, k_f and k_r , an Arrhenius type of rate expression is assumed

$$k_f = k_{0f}e^{\left(\frac{-E_f}{RT}\right)} \quad k_r = k_{0r}e^{\left(\frac{-E_r}{RT}\right)} \quad (22)$$

where the activation energy E is dependent on the catalyst and k_{0f} is dependent of the molarity of the reaction (Bommaman et al., 1989). R is the universal gas constant. Reaction 1 is endothermic and reaction 2-4 are exothermic. Reaction 1 dominates such that the overall reaction is endothermic.

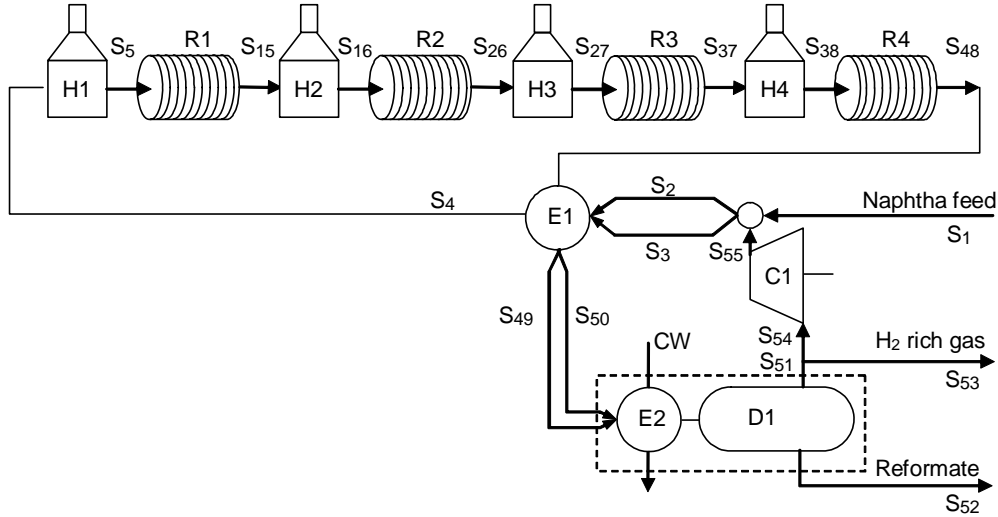


Figure 2: Model structure of naphtha reformer

The structure of the reformer model is shown in figure 2. The liquid feed S_1 is mixed with recycle gas S_{55} . The resulting vapor S_2 and liquid S_3 outlet stream are preheated in the reactor effluent heat exchanger E1 and then enter the first heater and reactor section. The heaters are modeled using direct heat input and each of the four reactors is modeled using ten CSTRs in series with even distribution of catalyst. Heat exchanger E2 and separator D1 is modeled using the same flash unit model .

In addition, variables and equations for the reformate octane number (RON), R1 feed hydrogen to hydrocarbon ratio, and some mass flows are added as internal variables in a "dummy" unit model. The mass flows are for the feed, reformate, gas and hydrogen products and recycle gas.

4.2 Process model

The model equations are organized in a unit model framework (Lid and Skogestad, 2007). For the CSTR elements the mass balances, energy balance, mole fraction summation and pressure drop relationship is written

$$F_1 \mathbf{x}_1 - F_2 \mathbf{x}_2 + A_c m_c N^T r(T_2, P_2) = 0 \quad (23)$$

$$F_1 h_v(\mathbf{x}_1, T_1) - F_2 h_v(\mathbf{x}_2, T_2) + A_c m_c H_r r(T_2, P_2) = 0 \quad (24)$$

$$\sum_{i=1}^{NC} \mathbf{x}_2(i) - 1 = 0 \quad (25)$$

$$P_2 - P_1 - k_p \left(F_2 \frac{RT_2}{P_2} \right)^2 = 0 \quad (26)$$

$$(27)$$

where the process stream variables \mathbf{x} , T , P and F represents the molar composition, temperature, pressure and molar flow respectively. The CSTR inlet and outlet streams are in this case marked with subscript 1 and 2. In addition m_c is the mass of catalyst, and A_c is a catalyst activity parameter.

This gives $NC + 3$ equations for each reactor element. Similar model are formulated for the other units; heater, separator with cooling, compressor, heat exchanger, stream mix and stream split. For details, together with thermodynamics data (enthalpy, entropy, vapor-liquid equilibria), the reader is referred to the thesis of Lid (2007).

The resulting model and specifications are written

$$\begin{aligned} f(z) &= 0 \\ A_s z &= b_s \end{aligned} \quad (28)$$

As seen from Tables 1 and 2, the model $f(z) = 0$ contains $n_z = 501$ variables z and $n_f = 442$ equations. The first requirement for a unique solution is that $n_z - n_f = 59$ variables are specified. These specifications are added as $n_s = 59$ rows in A_s with the corresponding specification values in b_s . Table 3 lists 23 of the specifications. The remaining 36 come from the catalyst efficiency factors for the CSTRs which are assumed equal within one reactor. This is incorporated as 36 linear constraints in A_s .

$$A_{c_i} - A_{c_{i+1}} = 0 \text{ for } i = 1 \dots 9, 10 \dots 19, 20 \dots 29, 30 \dots 39 \quad (29)$$

The selection of specification variables is not unique and other valid variable combinations exist. In order to have a unique solution, the matrix H of first

order derivatives of the nonlinear constraints and the linear constraint matrix must have full rank.

The model equations were programmed in Matlab, and the solution of the equations, as well as the subsequent data reconciliation and optimization, was done with the Matlab `fmincon` routine (Matlab, 2000). In order to reduce the computational load in solving the model, the first order derivatives were calculated analytically.

4.3 Nominal operation

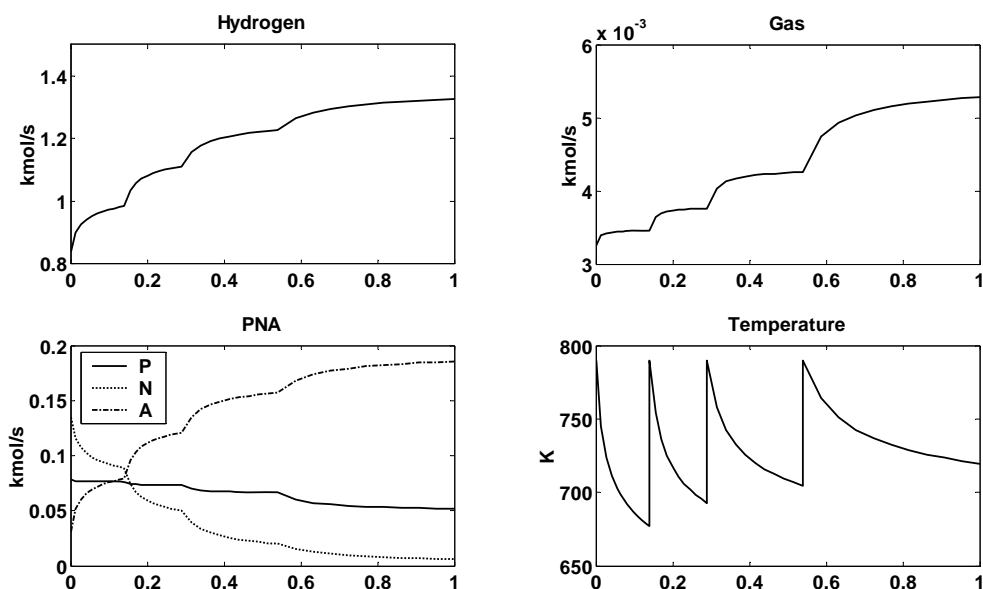


Figure 3: Nominal flows and temperature in reactors

Figure 3 shows for a typical case the molar flows of each component in the four reactors as a function of the normalized catalyst mass. There is a net production of hydrogen and gas. The largest amount of hydrogen is produced in reactor one and the largest amount of gas is produced in reactor four. The main reaction in reactor number one is conversion of naphthenes to aromatics. The main reaction in reactor number four is conversion of paraffines to naphthenes. The large temperature drop in reactor one is due to the large heat of reaction required for the conversion of naphthenes to aromatics.

Other key variables like heater duties and product yields are listed in table 4. The liquid and vapor yields are 94.57% and 5.43%, respectively, where

Process streams			
x		Molar fraction	$NC = 5$
F	kmol/s	Molar flow	1
T	K	Temperature	1
P	bar	Pressure	1
Total: $(NC + 3) \times 55$			440
Heaters			
Q	kW	Duty	1
Total: 1×4			4
Reactors			
A_c		Catalyst efficiency factor (one for each CSTR)	10
Total: 4×10			40
Heat exchanger E1			
Q	kW	Duty	1
U_1	kW/m ² /K	Heat transfer coefficient	1
Heat exchanger E2 and condenser			
Q	kW	Duty	1
U_2	kW/m ² /K	Heat transfer coefficient	1
F_{CW}	kmol/s	Cooling water molar flow	1
T_{CW_i}	K	Cooling water inlet temperature	1
T_{CW_o}	K	Cooling water outlet temperature	1
Compressor			
W	kW	Work	1
ψ		Efficiency	1
T_s	K	Reversible compression outlet temperature	1
Additional variables		$(\bar{F}$ is a unit conversion of F)	
RON		Reformat octane number	1
H_2/HC		R1 inlet hydrogen to hydrocarbon ratio	1
\bar{F}_1	t/h	Feed mass flow	1
\bar{F}_{55}	t/h	Recycle mass flow	1
\bar{F}_{53}	t/h	Vapor product mass flow	1
\bar{F}_{52}	t/h	Reformat product mass flow	1
$\bar{F}_{53}(H_2)$	t/h	Hydrogen product mass flow	1
Total:			$n_z = 501$

Table 1: Reformer model variables

Unit model	n_{fi}	Total
Heater	$NC + 3$	$(NC + 3) \times 4$
CSTR	$NC + 3$	$(NC + 3) \times 40$
Heat exchanger E1	$3NC + 10$	$3NC + 10$
Heat exchanger E2 and condenser	$2NC + 8$	$2NC + 8$
Compressor	$NC + 4$	$NC + 4$
Vapor/liquid feed mixer	$2NC + 6$	$2NC + 6$
Stream split	$2NC + 5$	$2NC + 5$
"Dummy" unit model	7	7
Total	$54NC + 172 =$	$n_f = 442$

Table 2: Reformer model equations

Description	Variable	Value
R1 catalyst efficiency factor	A_{e1}	1
R2 catalyst efficiency factor	A_{e11}	1
R3 catalyst efficiency factor	A_{e21}	1
R4 catalyst efficiency factor	A_{e31}	1
E1 heat transfer coefficient	U_1	560
E2 heat transfer coefficient	U_2	200
E2 cooling water flow	F_{CW}	5
E2 cooling water inlet temperature	T_{CW_i}	288
Compressor efficiency	ψ	0.75
Feed component molar fraction	$x_1(H)$	0
Feed component molar fraction	$x_1(G)$	0
Feed component molar fraction	$x_1(P)$	0.32
Feed component molar fraction	$x_1(N)$	0.56
Feed component molar fraction	$x_1(A)$	0.12
Feed mass flow	\bar{F}_1	85
Feed temperature	T_1	358
R1 inlet temperature	T_5	790
R2 inlet temperature	T_{16}	790
R3 inlet temperature	T_{27}	790
R4 inlet temperature	T_{38}	790
Compressor recycle mass flow	\bar{F}_{55}	8.0
Vapor product pressure	P_{53}	7.9
Liquid product pressure	P_{52}	8.0

Table 3: The 23 simulation variable specifications

Variable		Value	Unit
H1 duty	Q_{H_1}	8818	kW
H2 duty	Q_{H_2}	11865	kW
H3 duty	Q_{H_3}	10350	kW
H4 duty	Q_{H_4}	9196	kW
Compressor duty	W_C	682	kW
E1 duty	Q_{E_1}	37596	kW
E2 duty	Q_{E_2}	6865	kW
R1 inlet H ₂ /HC ratio	H_2/HC	3.48	
Reformate octane number	RON	102.4	
Reformate product flow	\bar{F}_{52}	80.4	t/h
Vapor product flow	\bar{F}_{53}	4.6	t/h

Table 4: Simulation results

the latter consist of hydrogen (4.13%) and gas (1.30%).

4.4 Data reconciliation results

In the data reconciliation we want to estimate the 23 remaining degrees of freedom (rather than specifying them as we did in the simulation case in table 3).

The naphtha reformer process has $n_y = 26$ measured values. These are from the feed, product and recycle gas analyzers, feed product and recycle gas mass flow measurements and various temperature measurements. All the measurements are listed in table 5. The values for the standard deviations are based on typical measurement uncertainties. For flow measurements the uncertainty are assumed to be 3% of the measurement range. For temperature measurements a fixed value of 3°C is assumed. The standard deviation for the analyzers of 1% are based on instrument specifications except for the recycle gas H_2 analyzer which has a higher standard deviation (10%) due to a large modeling error in this section (see discussion section).

The feed hydrogen and gas content is known to be almost zero and specifications $x_1(1) = 0$ and $x_1(2) = 0$ are added in the linear constraints A_r of the data reconciliation problem in equation (1). The remaining degrees of freedom then equal 21.

The observability of all variables, given the process model ($f(z) = 0$), linear constraints and specifications (A_r) and measurements (U), is verified by the

rank of

$$\Gamma = \begin{bmatrix} \frac{\partial f(z)}{\partial z} \\ A_r \\ U \end{bmatrix} \quad (30)$$

When Γ has full column rank (equal to the number of variables $n_z = 501$) the values of all variables are observable (Stanley and Mah, 1981). In this case the rank of Γ equals 498, which indicates that there are three unobservable variables.

One of these is the condenser liquid outlet pressure, which needs to be specified, as the liquid stream is not connected to any downstream units. In addition, there are no measurements of the cooling water inlet or outlet flow or temperature. Thus, in order to make all variables observable the values of P_{52} , F_{CW} and T_{CW_i} where specified by adding three linear constraints in A_r . The degrees of freedom are now reduced from 21 to 18.

It is verified, using the definition of redundancy in Crowe (1989), that all measurements in the reformer process are redundant.

Data reconciliation using equation (1) and (4) was applied to 21 data sets from the plant collected over a period of two years. The results are given in figures 4-7 and detailed results for data set no. 12 are shown in table 5. The uncertainty of the estimated values are computed using the method from Romagnoli and Stephanopoulos (1981) and are shown in table 5.

There is almost no reduction of uncertainty in the estimate of the reactor inlet or outlet temperatures, compared with the uncertainty of the measured values. This is probably because there is in practice little redundancy in the reactor section measurements (only inlet and outlet temperatures are measured). The feed (\bar{F}_1) and product mass flow (\bar{F}_{52}) uncertainty is reduced by approximately 30%. The compressor inlet temperature (T_{54}), separator outlet temperature (T_{52}) and in particular the recycle gas hydrogen content ($x_{54}(1)$) has a large reduction of uncertainty. This is probably due to the oversimplification in the modeling of the separator and recycle gas system (i.e. model error).

The values and standard deviations of the heat exchanger heat transfer coefficients and reactor and compressor efficiency are shown in table 6. On average the uncertainties in these variables are 10-35% of the actual value except for the estimate of U_2 . The estimated uncertainty in U_2 shows that this variable is not practically observable and indeed the estimate of $U_2 = 200\text{W}/\text{m}^2/\text{K}$ is equal to its initial value.

Gross errors (non-zero bias) according to the criterion given in Tjoa and

Measurement	Variable	Measured	Std.	Reconciled	Std.	Unit
		value		value		
		y_m	σ_m	$y = Uz_r$	σ_y	
Feed P molar fraction	$x_1(3)$	0.32	0.01	0.32	0.01	
Feed N molar fraction	$x_1(4)$	0.56	0.01	0.56	0.01	
Feed A molar fraction	$x_1(5)$	0.12	0.01	0.12	0.01	
Feed temperature	T_1	358.5	3.0	360.8	2.72	K
E1 cold side inlet temperature	T_2	344.5	3.0	338.2	1.49	K
E1 cold side outlet temperature	T_4	706.6	3.0	706.6	2.71	K
H1 outlet temperature	T_5	794.0	3.0	794.3	2.96	K
R1 outlet temperature	T_{15}	*649.1	3.0	670.0	2.97	K
H2 outlet temperature	T_{16}	788.6	3.0	788.9	2.96	K
R2 outlet temperature	T_{26}	704.0	3.0	703.8	2.96	K
H3 outlet temperature	T_{27}	798.4	3.0	798.8	2.96	K
R3 outlet temperature	T_{37}	698.6	3.0	698.4	2.96	K
H4 outlet temperature	T_{38}	797.8	3.0	798.2	2.96	K
R4 outlet temperature	T_{48}	*763.6	3.0	722.8	2.71	K
E1 hot side outlet temperature	T_{50}	*385.4	3.0	353.5	1.98	K
Separator D1 pressure	P_{51}	7.93	0.2	7.89	0.16	bar
Separator D1 outlet temperature	T_{52}	292.2	3.0	294.1	0.51	K
Recirculation gas H ₂ molar frac.	$x_{54}(1)$	0.90	0.1	0.99	0.0002	
Compressor inlet temperature	T_{54}	294.2	3.0	294.1	0.51	K
Compressor outlet temperature	T_{55}	323.0	3.0	324.4	2.92	K
Compressor outlet pressure	P_{55}	10.3	0.2	10.3	0.14	bar
Reformate octane number	RON	103.9	1.0	103.7	0.72	
Feed mass flow	\bar{F}_1	88.0	3.0	87.1	2.13	t/h
Compressor outlet mass flow	\bar{F}_{55}	10.1	1.0	9.78	0.67	t/h
Vapor product mass flow	\bar{F}_{53}	6.54	1.0	4.96	0.17	t/h
Reformate product mass flow	\bar{F}_{52}	80.3	3.0	82.1	2.02	t/h

Table 5: Reconciled values of the measured variables for data set no. 12

Description	Variable	Estimate	σ
R1 catalyst efficiency factor	A_{c1}	1.30	0.16
R2 catalyst efficiency factor	A_{c2}	0.59	0.17
R3 catalyst efficiency factor	A_{c3}	1.36	0.21
R4 catalyst efficiency factor	A_{c4}	0.93	0.20
E1 heat transfer coefficient [W/m ² /K]	U_1	515	165
E2 heat transfer coefficient [W/m ² /K]	U_2	200	1362100
Compressor efficiency	ψ	0.76	0.10

Table 6: Estimates of unmeasured variables for data set no. 12

Biegler (1991) are detected for the measured values marked with *. For data set 12 we detect gross error for reactor 1 outlet (T_{15}), reactor 4 outlet (T_{48}) and E1 hot side outlet temperature (T_{50}).

The two latter (T_{48} and T_{50}) have a gross error detected in all 21 data sets. The outlet temperatures of reactor 1 has gross errors detected in data sets 12 and 13 and the outlet temperature of reactor 4 has gross errors detected in data sets 14. The compressor mass flow has a gross error detected in three data sets and the feed temperature has a gross error detected in one data set.

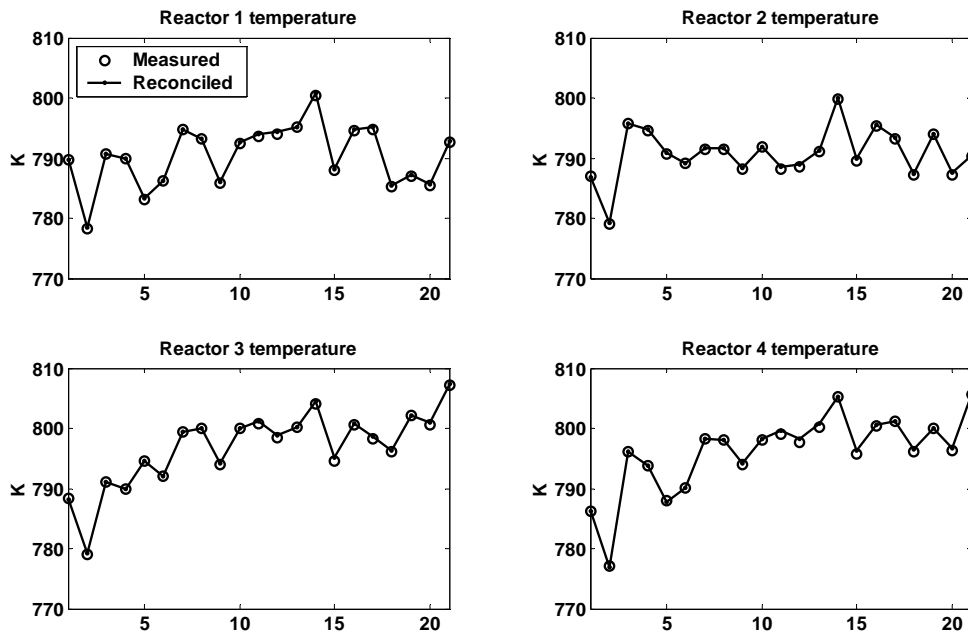


Figure 4: Reconciled reactor inlet temperatures for the 21 data sets

Figure 4 shows the measured and reconciled reactor inlet temperatures for all 21 data sets. The adjustments of the catalyst efficiency factors contribute to an almost perfect fit to the measured data. We have the highest reaction rate, and thus the highest influence on the other measured values, at the inlet of the reactor and this may be one reason why the error in temperature drop over each reactor is assigned to the reactor outlet temperatures.

There are large predicted measurement errors in the reactor outlet temperatures, as shown in figure 5. The outlet temperature of reactor one and two have gross errors in most data sets but some data points have almost zero measurement error. The outlet temperature of reactor number four has an

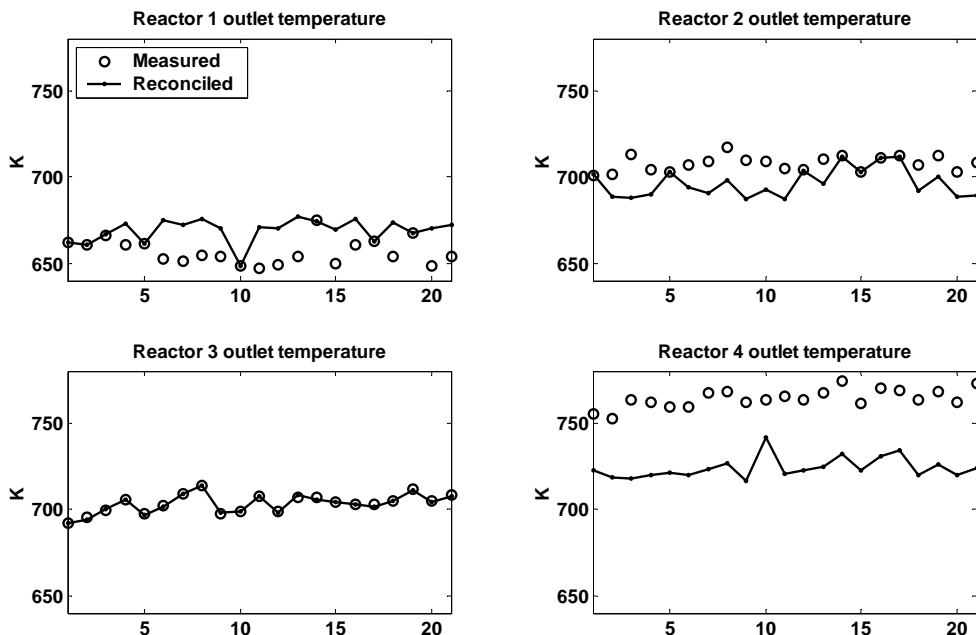


Figure 5: Reconciled reactor outlet temperatures for the 21 data sets

almost fixed bias in all data sets. As a curiosity, the outlet temperature of reactor three is "accepted" as an untrustworthy measurement at the refinery. However, this is not supported by our results which show close to zero measurement error in all data points.

The estimated catalyst efficiencies for all data sets are shown in figure 6.

Ideally, the catalyst efficiency factors A_c should be close to one in all data sets but due to variation in the catalyst circulation some changes in A_c are expected. In periods, where the catalyst regenerator is shut down, the unit may run for several days with no catalyst circulation. In these periods the catalyst efficiency will decrease due to coke build up on the catalyst.

The values of A_c show large deviations in excess of 1 in data points 5, 10, 17 and 19. There is no clear reason for this and the data at these points does not differ significantly from the others. An observation is that the measurement error of reactor one outlet temperature is almost zero at these points but this is also true for data points 1, 2, 3 and 14.

From figure 7, we find the average deviation between the measured and reconciled values for the mass flows of feed, reformate and gas are 0.7t/h, -1.93t/h and 1.59t/h respectively. The average deviation for octane is -0.25. The reconciled gas mass flow is persistently lower than the measured value and

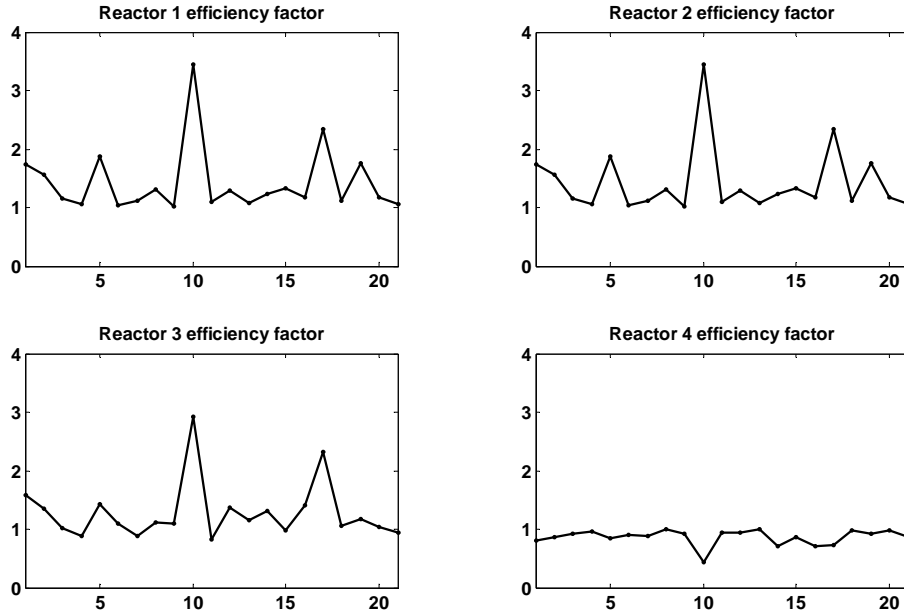


Figure 6: Estimated reactor efficiencies A_c for the 21 data sets

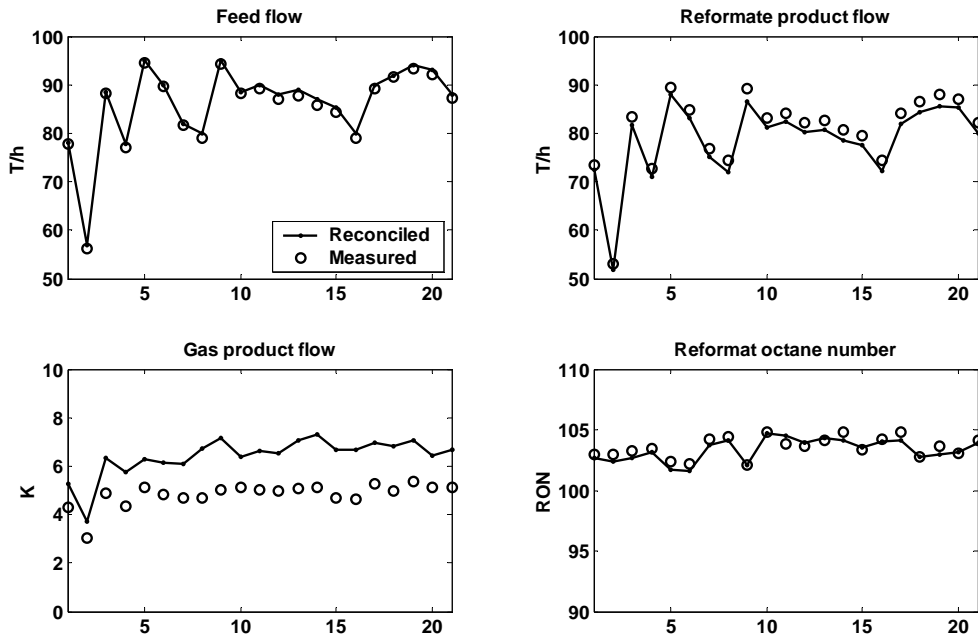


Figure 7: Reconciled mass flows and product quality for the 21 data sets

even if no gross errors were detected in the measured value the presence of a systematic error is clear.

5 Optimal operation

5.1 Optimization problem

Optimal operation is calculated by minimizing the cost function, subject to the process model, fixed variables and operating constraints. The optimization problem is written as

$$\begin{aligned} \min_z \quad & J(z) \\ \text{s.t.} \quad & f(z) = 0 \\ & A_{opt}z = b_{opt} \\ & z_{opt \min} \leq z \leq z_{opt \max} \end{aligned} \tag{31}$$

where $J(z) = -p(z)^T z$. In our case p is a vector of fixed prices of feed, products and utilities, see table 7.

Fixed variables include feed data (composition and temperature), heat transfer coefficients and compressor efficiency and are set equal to their reconciled values using linear equality constraints $A_{opt}z = b_{opt}$ in (31).

Operating constraints like maximum feed flow, maximum pressure, maximum temperature and minimum product octane are added as upper and lower bounds on the variables in $z_{opt \min}$ and $z_{opt \max}$, see table 8.

The naphtha reformer is the main producer of hydrogen at the refinery and may not be shut down even if the product price is low and the unit profit is negative. Thus, to secure the availability of hydrogen a lower bound is added on the reformer unit hydrogen production.

The number of degrees of freedom for the optimization is $n_z - n_f - n_{opt} = 7$. This follows because the number of variables is $n_z = 501$, the number of equations is $n_f = 442$ and the number of rows (fixed values) in A_{opt} is $n_{opt} = 52$. Specifically, the 52 specified (fixed) values added in A_{opt} are 40 catalyst efficiency factors, 2 heat exchanger heat transfer coefficients, compressor efficiency, feed temperature and $NC = 5$ feed mole fractions, reformat outlet pressure, cooling water flow and cooling water inlet temperature. Note that the feed rate is not specified so its optimal value is obtained as part of the optimization.

Price (p)	Value	Unit	Variable
Feed	-60	\$/t	\bar{F}_1
Reformate (case 1)	100	\$/t	\bar{F}_{52}
Reformate (case 2)	65	\$/t	\bar{F}_{52}
Gas	50	\$/t	$\bar{F}_{53}(\text{Gas})$
Hydrogen	0	\$/t	$\bar{F}_{53}(\text{H}_2)$
Utility	-0.0015	\$/kW	$Q_{H1}, Q_{H2}, Q_{H3}, Q_{H4}, W$

Table 7: Economy data

5.2 Optimization results

Two operational cases, which both are common operational regimes for a naphtha reformer unit in a refinery, are analyzed.

- Case 1. The product (reformate) price is high and throughput (feedrate) is maximized, subject to satisfying constraints.
- Case 2. The product price is low and throughput is minimized subject to meeting the production demand on hydrogen.

Description	Variable	Unit	Min.	Max.	Nominal Rec.	Optimal Case 1	Optimal Case 2	Case 2 (same T)
Feed	\bar{F}_1	t/h			89.2	95.6	84.1	84.1
Reformate product	\bar{F}_{52}	t/h			84.2	90.6	79.7	79.7
Gas product	$\bar{F}_{53}(G)$	t/h			1.2	1.0	0.9	0.9
H ₂ product	$\bar{F}_{53}(H)$	t/h	3.5		3.8	4.0	*3.5	*3.5
Reformate octane	RON		103.0		103.9	*103.0	*103.0	*103.0
R1 inl. temp.	T_5	K		810.0	794.0	790.7	794.1	789.5
R2 inl. temp.	T_{16}	K		810.0	788.6	782.7	788.8	789.5
R3 inl. temp.	T_{27}	K		810.0	801.2	799.9	798.8	789.5
R4 inl. temp.	T_{38}	K		810.0	799.6	791.6	780.4	789.5
H1 duty	Q_1	MW		9.5	9.3	*9.5	8.6	8.2
H2 duty	Q_2	MW		13.0	12.7	*13.0	12.2	12.3
H3 duty	Q_3	MW		13.0	12.1	*13.0	11.3	10.5
H4 duty	Q_4	MW		10.0	10.0	*10.0	7.6	8.8
Compressor duty	W	MW			0.88	0.48	0.39	0.39
R1 feed H ₂ /HC	H ₂ /HC		3.0		5.0	*3.0	*3.0	*3.0
Separator pres.	P_{53}	bar	8.0	10.0	8.0	*10.0	*10.0	*10.0
Profit		\$/h			2638	2883	-249	-249

Table 8: Optimal operation with conditions from data set 12 (* = active constraint)

The detailed results from the optimization for case 1 and 2 are shown in table 8. In both cases the minimum reformat RON of 103 is an active constraint. This is expected because reformat is the most valuable product of the three, and we want to avoid "give away". The maximum separator pressure of 10 bar and the minimum H_2/HC ratio of 3 in reactor 1 are also active constraints in both cases.

In case 1, the operation is in addition constrained by the maximum heater duties. The improvement in profit, compared to the reconciled solution, is 245\$/h (2.1×10^6 \$/year). This comes as a result of an increased feed flow, and a reformat yield improvement of 0.43%. The yield improvement is mainly due to reduced temperatures in the reactors and reduced reformat RON.

In case 2, the operation is in addition constrained by the minimum hydrogen product mass flow of 3.5t/h.

The marginal values of the active constraints are shown in table 9. These are computed by adding a small change to the constraint value and observing the corresponding change in the profit function at the new optimal conditions.

Description	Variable	Unit	Case 1	Case 2
Reformat octane	RON	-	-124	-13
R1 inlet H_2/HC	H_2/HC	-	-24	-5.0
Separator pres.	P_{53}	bar	-0.44	-1.9
H_2 flow	$\bar{F}_{53}(H)$	T/h	-	-79
H1 duty	Q_1	MW	-60	-
H2 duty	Q_2	MW	-60	-
H3 duty	Q_3	MW	-60	-
H4 duty	Q_4	MW	-60	-

Table 9: Marginal values for active constraints with conditions from data set 12 (\$/unit)

The constraint marginal values show that in case 1 the reformat RON is the most important variable to keep close to its constraint. Similarly, the minimum hydrogen mass flow is the most important variable in case 2 where we actually have a economic loss.

5.3 Implementation of optimal operation

In order to operate the process optimally the seven degrees of freedom have to be specified or fixed. These specifications are implemented as controlled

variables. The degrees of freedom can be thought of being related to the heat input to the four heaters, the feed, the compressor work (recycle flow) and the H_2 product flow (purge). The basic control layer includes heater duty control, feed flow control and pressure control.

In case 1, there are seven active constraints and implementation is obvious: the seven active constraints are selected as controlled variables.

In case 2, there are four active constraints and these are selected as controlled variables. It is less obvious what to select as controlled variables for the remaining three unconstrained degrees of freedom. The problem is that the optimal value of the unconstrained variables depend on the disturbance, and also that there is a implementation error associated with control of the unconstrained variables (Skogestad, 2000). The objective is to find "self-optimizing" control variables which are insensitive to disturbances and control errors, that is, which result in a small economic loss. A closer analysis shows that the optimal variation in the inlet temperatures to the for reactors (which are between 780.4K and 798.8K in case 2) are not important. In fact specifying that the four reactor inlet temperatures to be equal (which corresponds to adding three specifications) only marginally decreases the profit by 0.005\$/h. This is shown by the column "Case 2 (same T)" in table 8. This is also consistent with the equal marginal values of the heater duties in case 1 shown in table 9.

In summary, "self optimizing control" is achieved by adding three reactor difference temperatures as controlled variables with a zero set point. The actual reactor inlet temperatures will be indirectly determined by the four active constraints.

CVs Case 1	CVs Case 2	MVs
Reformate RON	Reformate RON	Feed flow
Pressure	Pressure	H_2 flow (purge)
R1 feed H_2/HC	R1 feed H_2/HC	Compressor work
H1 duty (max.)	H_2 flow (purge)	H1 duty
H2 duty (max.)	$T_{R1}-T_{R2}(=0)$	H2 duty
H3 duty (max.)	$T_{R2}-T_{R3}(=0)$	H3 duty
H4 duty (max.)	$T_{R3}-T_{R4}(=0)$	H4 duty

Table 10: Proposed controlled variables for the two cases

Table 10 summarizes the controlled variables (CVs) for the two operational cases. The manipulated variables (MVs) are also shown in the table to indicate that we have sufficient degrees of freedom, but the order is not intended

to indicate a pairing between MV and CV. For implementation it is proposed to use model predictive control (MPC) for which it is not necessary to make a decision on pairing. The MPC environment also facilitates prioritizing of ideal values (MV set points), set points and constraints and the strategy for both cases can easily be implemented in the same controller. Changing the feed ideal value from maximum to minimum value will effectively result in a smooth switch from operational case 1 to operational case 2.

6 Discussion

The measured recycle gas hydrogen mole fraction is 0.90 and the reconciled value is 0.99. This error is mainly due to model error and the simplification of the hydrocarbon light end components. In the model, G does not evaporate at the process conditions in the separator. In the real process a molar fraction of 0.04 C_1 and C_2 hydrocarbons are present in the recycle gas. Also a molar fraction of 0.03 C_{3+} is present. This indicates a non ideal behavior in the separator with some entrainment of heavier hydrocarbons. The pseudo component G may give a sufficiently accurate description of the reactions but seems to be too simple to give a good description of the separator and recycle system. The uncertainty of the recycle gas analyzer is set at a high value (0.1) since the "measurement error" in this case is mainly due to a modeling error.

7 Conclusions

A refinery naphtha reformer was successfully modeled using a simple unit model structure. Necessary scaling of variables and equations improves the numerical properties of the model. The condition number of the model equations are reduced from 2.3×10^{12} to 3.6×10^4 . The model equations are solved using seven iterations using "best guess" initial values.

The model was fitted to 21 different data points using data reconciliation. The results show significant variation in catalyst efficiency parameters and deviation in reactor outlet temperatures. A good fit in one data set is not sufficient to claim that the model is a good description of the process.

The data reconciliation problem was analyzed and unobservable variables were identified. This example shows that if a variable is defined as observable, by the observability test, it still may be practically unobservable.

This is consistent with the computed uncertainty of the estimate, where the "barely observable variable" has an uncertainty of 6800 times its value.

Optimal operation was computed for two common operational cases defined by a high (case 1) and a low product price (case 2). The optimum operation has in case 1 seven active constraints and in case 2 four active constraints. In both cases the active constraints are selected as controlled variables. In case 2, the remaining three degrees of freedom are specified by adding three reactor inlet temperature differences as "self optimizing control variables".

A model predictive control (MPC), with prioritizing of set points and constraints, has the required flexibility for implementation of the proposed control structure. The losses with this strategy are small, so the expected benefits of implementing a real time optimizer (RTO) for re-optimizing the set points for the unconstrained variables will be minor, for this application .

A Matlab model and the Ph.D. thesis of Lid are available on the home page of S. Skogestad.

References

- D. Bommannan, R. D. Srivastava, and D. N. Saraf. Modeling of catalytic naphtha reformers. *Canadian journal of chemical engineering*, 67:405–411, 1989.
- Cameron M. Crowe. Observability and redundancy of process data for steady state reconciliation. *Chemical Engineering Science*, 44(12):2909–2917, 1989.
- J. W. Lee, Y. C. Ko, Y. K. Jung, K. S. Lee, and E. S. Yoon. A modeling and simulation study on a naphtha reforming unit with catalyst circulation and regeneration system. *Computers & Chemical Engineering*, 21:S1105–S1110, 1997.
- Tore Lid. *Data reconciliation and optimal operation*. PhD thesis, Norwegian University of Science and Technology, 2007.
- Tore Lid and Sigurd Skogestad. Effective steady state models for simulation, data reconciliation and optimization. *Computers & Chemical Engineering*, doi:10.1016/j.compchemeng.2007.04.003, 2007.
- Matlab. *Optimization Toolbox Version 2.1*. The MathWorks Inc., 3 Apple Hill Drive, Natick, MA 01760-2098, UNITED STATES, 2000.
- J. A. Romagnoli and G. Stephanopoulos. Rectification of process measurement data in the presense of gross errors. *Chemical Engineering Science*, 36(11):1849–1863, 1981.
- Sigurd Skogestad. Plantwide control: The search for the self-optimizing control structure. *Journal of Process Control*, 10:487–507, 2000.
- R. B. Smith. Kinetic analysis of naphtha reforming with platinum catalyst. *Chemical Engineering Progress*, 55(6):76–80, 1959.
- G. M. Stanley and R. S. H. Mah. Observability and redundancy in process data estimation. *Chemical Engineering Science*, 36:259–272, 1981.
- Unmesh Taskar and James B. Riggs. Modeling and optimization of a semire-generatioive catalytic naphtha reformer. *AIChE Journal*, 43(3):740–753, 1997.
- I. B. Tjoa and L. T. Biegler. Simultaneous strategies for data reconciliation and gross error detection of nonlinear systems. *Computers & Chemical Engineering*, 15(10):679–690, 1991.