

Flow Cytometry Based State Aggregation of a Stochastic Model of Protein Expression

Anahita Mirtabatabaei, Francesco Bullo, Mustafa Khammash

Abstract—In this article, we introduce the new approach *fluorescence grid based aggregation (FGBA)* to justify a dynamical model of protein expression using experimental fluorescence histograms. First, we describe the dynamics of the gene-protein system by a chemical master equation (CME), while the protein production rates are unknown. Second, we aggregate the states of the CME into unknown group sizes. Then, we show that these unknown values can be replaced by the data from the experimental fluorescence histograms. Consequently, final probability distributions correspond to the experimental fluorescence histograms.

I. INTRODUCTION

In the study of protein expression, *flow cytometry* is a promising technique for the analysis of protein regulatory systems [11], [9], [13]. In a cell colony, flow cytometry measures single cell's fluorescent intensity, which represents the protein concentration, and draws a *fluorescence histogram*. A fluorescence histogram of a cell colony is a plot of the cell count versus measured fluorescent intensity [17]. In theory, the process of protein expression has been stochastically analyzed to generate a probability distribution of protein concentration. However, there are two deficiencies to this analysis. First, generated probability distributions do not represent the experimental fluorescence histograms, since the relation between fluorescent intensity and protein concentration is unknown. Second, the protein production rate, a key parameter in stochastic analysis of expression, is not known for different expression states of a gene.

In this paper, we study the expression of a protein called *Ag43* by a gene named *agn43*. This protein is not involved in feedback regulation, and instead the encoding gene uses a mechanism of generating multiple *phases* in order to regulate the protein production. Phase variation describes changes in the *expression state* of the gene that results in mixed cell cultures in a colony [16]. A gene is called to have an *On*, *Partial*, or *Off* expression state, if it produces protein with a high, low, approximately zero rate, respectively. In the mechanism of *agn43* regulation, between phases with *On* and *Off* expression states, the gene enters intermediate phases that act as buffers and prevent back and forth switching. Recently, Lim et al. (2007) proposed a dynamical model for the phase variation of *agn43* and identified a third expression state, *Partial*, for the gene. They verified the model deterministically, and computed the phase variation rates of the gene. However, the protein production rates in those three expression states are unknown, and the dynamics of the protein production is not analyzed.

As our main contribution, we introduce a new approach to justify the dynamical model of gene-protein system by the experimental fluorescence histograms. We call this approach

the *fluorescence grid based aggregation (FGBA)*. First, we compute the rate of increase in fluorescent intensity of each cell by the steady state histograms. This rate has a linear relation with the protein production rate. Second, assuming that the stochastic dynamics of the gene-protein system is a Markov process, we describe this system by a chemical master equation (CME), while the protein production rates, for different expression states, are unknown. Third, we aggregate the states of the CME into groups with unknown sizes, and compute the dynamics of the aggregated system. In previous studies, aggregation of Markov chains, also known as sparse grid approximation [5] and projection through interpolation [12], has been employed to the gene regulatory networks to reduce the computation time. However, in those studies, the number of states being aggregated and the protein production rates were known, as opposed to our method. In FGBA method, we aggregate the CME based on the fluorescence grid sizes of the experimental fluorescence histograms. By employing this method on the CME, we achieve the following goals: (1) we eliminate the dependence of the CME on protein number and thus on unknown protein production rates; (2) we define CME as a function of fluorescent intensity, whose final probability distribution corresponds to the experimental fluorescence histogram; and (3) we reduce the size of the differential CME to reduce the computation time. Finally, we find an upper bound for the evolution of the error caused by employing FGBA method.

The paper develops as follows. The remainder of this section reviews the studied gene and protein. The deterministic and stochastic analysis of the gene-protein system is discussed in Sections II and III, respectively. The FGBA method and its error are presented in Subsection III-A. Numerical results are provided in Section IV. Finally, conclusions are drawn in Section V.

A. Gene-Protein System

Antigen 43 (Ag43) is an outer membrane protein in the bacteria *Escherichia coli* and is described as its "most abundant phase varying outer membrane protein" [7]. This protein is encoded by a single gene called *agn43* or *flu*. *Flu* is an abbreviation of fluffing due to the fact that the production of *Ag43* causes interspecies cell aggregation by *Ag43-Ag43* interaction. Hence, the expression of this protein enhances biofilm formation. The phase variation of *agn43*, performed by an *epigenetic switch*, regulates the production of *Ag43*. An epigenetic switch can be defined as a heritable yet reversible switch in gene expression state, which is not mediated by a change in DNA sequence [16]. Therefore, *agn43* is a controllable toggle switch and forms

a synthetic, addressable cellular memory unit, a practical device in biotechnology, biocomputing and gene therapy [4].

The dynamics of phase variation in *agn43* is studied separately by [11] and [16]. A schematic of the model proposed by [11] is illustrated in Figure 1. The methylation state of three GATC sequences along the gene decides whether the expression is On (methylated) or Off (unmethylated). The methylation state of the GATC sites is determined by competitive binding between OxyR, a global oxidative stress protein, and DNA adenine methylase (Dam). Since there is no DNA demethylation reaction, gene replication is essential to the phase variation. After each replication: fully methylated *agn43* (M_F), whose expression state is On, becomes hemimethylated (M_H); each M_H generates one hemimethylated and one unmethylated and naked *agn43* (U_N); and the gene in the rest of phases keeps its initial phase. In Lim's model, the expression state of M_H is said to be either On or Partial, while we assume this expression to be On, according to the heritable expression state of *agn43* [15]. Moreover, OxyR can bind to U_N and generate an unmethylated *agn43* with OxyR (U_O). Then, the DNA in U_O phase can undergo a conformational change, giving rise to an Off phase (O) with Off expression state. Lim assumed that *agn43* in U_N and U_O phases has partial expression, as opposed to the model proposed by Marjan et al. (2008).

II. DETERMINISTIC ANALYSIS

The deterministic dynamics of the *agn43*-Ag43 system can be divided into three parts: gene's phase variation, protein production, and the gene replication during cell division.

A. Dynamics of Phase Variation

We briefly review the dynamics of *agn43* phase variation in Lim's model. According to Section I-A, five phases and three expression states are assigned to *agn43*: M_F , M_H , U_N , U_O , and O phases with On, On, Partial, Partial, and Off expression states, respectively. As illustrated in Figure 1, the dynamics of these five phases can be written as:

$$\begin{aligned}\dot{M}_F(t) &= k_M M_H(t), & \dot{M}_H(t) &= k_H U_N(t) - k_M M_H(t), \\ \dot{U}_N(t) &= k_{-O} U_O(t) - (k_O + k_H) U_N(t), \\ \dot{U}_O(t) &= k_{-R} O(t) + k_O U_N(t) - (k_{-O} + k_R) U_O(t), \\ \dot{O}(t) &= -k_{-R} O(t) + k_R U_O(t).\end{aligned}$$

According to the supplementary methods of [11], $k_M = 4.3$, $\frac{k_O}{k_{-O}} = 3.7$, and $\frac{k_R}{k_{-R}} = 15.8$. Based on our sensitivity analysis, we used $\frac{k_R}{k_H} = 0.4$. Here, we need two more equalities to compute all the phase varying rates. Owing to rare On-Off switching of the *agn43* (7×10^{-3} cells per generation), $k_H \ll k_O$, hence we assume that $k_O = 1000k_H$. Finally, considering the steady state of the system, it can be computed that $k_R = 0.118k_O$.

B. The Dynamics of the Protein Production

A useful function that describes protein production rate in many real genes is *Hill function* [2]. According to this function, in the absence of activator and repressor, the protein production rate is constant. As discussed in Section I-A, there is no feedback regulation in the production of Ag43 and the

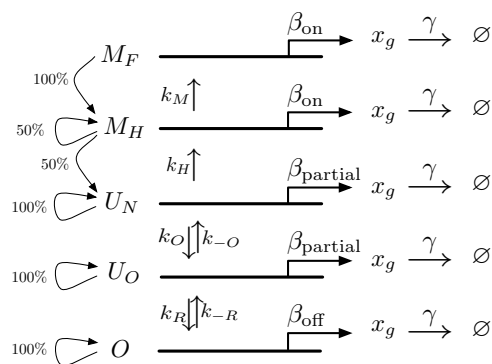


Fig. 1. Lim's dynamical model of *agn43*-Ag43. The gene has five phases M_F , M_H , U_N , U_O , and O , with On, On, Partial, Partial, and Off expression states, respectively. Depending on the expression state, the protein x_g is produced with three different rates β_{on} , $\beta_{partial}$, and β_{off} , but degrades with fixed rate γ . The arrows on the left represent the effect of replication on the phase of the gene.

concentration of external factors, OxyR and Dam, during cell growth is constant by over expression. Thus, the dynamics of protein production can be described by

$$\dot{x}_g(t) = \beta - \gamma x_g(t), \quad (1)$$

where $x_g(t)$, β , and γ represent the concentration, production rate, and degradation rate of the reporter protein, respectively. In the experiments by [11], *green fluorescent protein* (GFP) is used as a reporter, and its production is regulated by *agn43*. GFP exhibits fluorescence in the cell, that can be measured by flow cytometry. Based on the method of generating and amplifying the expression of GFP in [11], we assume that there is a linear relation between the rates of Ag43 production and GFP production in the cell. However, their degradation is independent of each other, and the latter is measurable by flow cytometer. Therefore, we consider the dynamics of GFP production to verify the model by experimental results.

The rate γ is the sum of *dilution* and *degradation* rates. Dilution is the reduction of protein density due to increase in cell volume. Since a flow cytometer measures the total fluorescence of a cell rather than the density of fluorescence, the dilution rate is zero. Degradation rate is computed by protein's half life τ while its production rate is zero. That is, $x_g(\tau) = x_g(0)/2 = x_g(0)e^{-\gamma\tau}$, and thus $\gamma = \ln 2/\tau$. Half life of wild type GFP is 26 hr [3], and one generation takes 85 min [11], hence, γ is 0.0378 proteins per generation.

The protein production rate β depends on the expression state of the gene, On, Partial, or Off. Consider a gene that remains in one expression state as time goes to infinity. Then, the protein concentration of the cell reaches a steady state $x_{g,\infty}$, and thus $\lim_{t \rightarrow \infty} \dot{x}_g(t) = 0$. It follows from equation (1) that $\beta = \gamma x_{g,\infty}$ proteins per generation. Our tool to compute $x_{g,\infty}$ is the experimental fluorescence histogram, e.g., Figure 2. However, such histogram gives us the fluorescent intensity of a cell in steady state in arbitrary units (a.u.) rather than protein concentration.

The fluorescent intensity x_f depends linearly on protein (GFP) concentration, see [1] and [14]. That is, $x_f(t) = \mu x_g(t)$, where we call μ the *fluorescence-GFP ratio*, and its

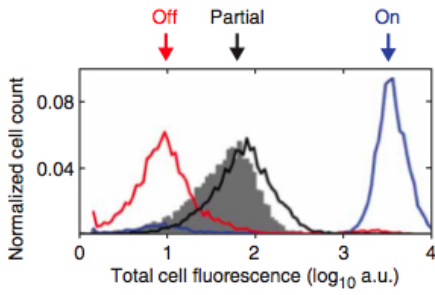


Fig. 2. Three fluorescence histograms of cell colonies in three different expression states after 20 hours. This plot tells us that the steady state fluorescent intensity of a cell whose *agn43* has On, Partial, or Off expression state is $10^{3.5}$, $10^{1.8}$, or 10 a.u., respectively. Reprinted figure with permission from [11]. ©2007, by Nature Publishing Group.

value is unknown. Taking the derivative of both sides gives

$$\dot{x}_f(t) = \mu(\beta - \gamma x_g(t)) = \mu\beta - \gamma x_f(t) = \beta_f - \gamma x_f(t), \quad (2)$$

where β_f denotes the rate of increase in fluorescent intensity of the cell. According to Figure 2, the steady state fluorescent intensity $x_{f,\infty}$ of a cell whose *agn43* has On, Partial, or Off expression state is $10^{3.5}$, $10^{1.8}$, or 10 a.u., respectively. It follows from $\beta_f = \gamma x_{f,\infty}$ that $\beta_{f,\text{on}} = 238$, $\beta_{f,\text{partial}} = 3$, and $\beta_{f,\text{off}} = 0.37$ a.u. per generation.

C. Replication Rates

Replication of the cell has two effects in our model. First, we assume that the protein concentration of the cell becomes half of its initial value. This assumption is based on two reasons: "in immunofluorescence studies of Ag43-producing *E. coli*, the protein is seen evenly distributed over the surface of the entire cell" [6]; and, in our stochastic analysis we have observed that employing binomial distribution for protein concentration after replication has a negligible effect on the final probability distribution. Second, after replication the gene's phase vary: any M_F gene becomes M_H ; half of M_H genes become U_N , and the other half remain M_H ; and genes in the rest of phases keep their initial phase, see Figure 1.

III. STOCHASTIC ANALYSIS

We aim to describe the dynamics of the protein expression by the phase varying gene *agn43* by a Markovian process. We compute the probability of a cell being in any *configuration*, which is here determined by its gene's phase plus its protein concentration. Therefore, a cell's configuration changes based on: (1) phase variation rates, (2) protein production and degradation rates, and (3) replication rates, see Figure 3. For each cell, the probability of having any such configuration is a function of time, and the union of those probabilities makes up the probability distribution vector $P(t)$. More specifically, the first five entries of $P(t)$ represent the probability of a cell having no protein and a gene with M_F , M_H , U_N , U_O , and O phases, respectively; the second five entries represent the probability of the cell having one protein and a gene in mentioned phases; and so on. This probability vector evolves according to a continuous-time Markov process, which is called the chemical master equation (CME):

$$\dot{P}(t) = AP(t) + RP(t). \quad (3)$$

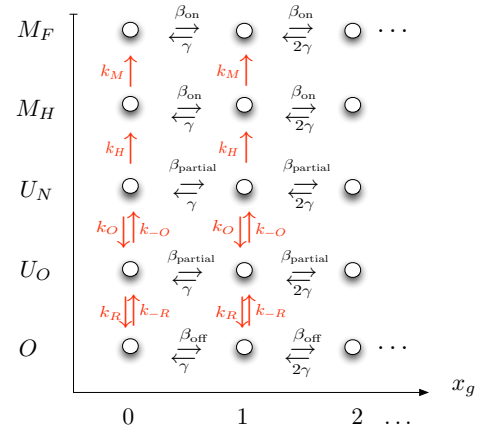


Fig. 3. Each circle represents one possible configuration for a cell that contains *agn43*, based on the cell's protein concentration (horizontal axis) and its gene's phase (vertical axis). The transitions between configurations, shown by arrows, is possible through phase variation (red arrows) or change in protein concentration (black arrows). For brevity, the effect of cell replication on protein concentration is not illustrated.

The *transition matrix* A contains phase varying and protein production/degradation rates, and R is the *replication matrix*. According to the system's deterministic dynamics, we compute the building blocks of the transition matrix, i.e., phase variation matrix K and protein production matrix B :

$$K = \begin{bmatrix} 0 & k_M & 0 & 0 & 0 \\ 0 & -k_M & k_H & 0 & 0 \\ 0 & 0 & -k_H - k_O & k_{-O} & 0 \\ 0 & 0 & k_O & -k_{-O} - k_R & k_{-R} \\ 0 & 0 & 0 & k_R & -k_{-R} \end{bmatrix},$$

$$B = \begin{bmatrix} \beta_{\text{on}} & 0 & 0 & 0 & 0 \\ 0 & \beta_{\text{on}} & 0 & 0 & 0 \\ 0 & 0 & \beta_{\text{partial}} & 0 & 0 \\ 0 & 0 & 0 & \beta_{\text{partial}} & 0 \\ 0 & 0 & 0 & 0 & \beta_{\text{off}} \end{bmatrix}.$$

If we denote the identity matrix of size five by I_5 , then

$$A = \begin{bmatrix} K - B & \gamma I_5 & 0 & \dots \\ B & K - B - \gamma I_5 & 2\gamma I_5 & 0 \\ 0 & B & K - B - 2\gamma I_5 & 3\gamma I_5 \\ \vdots & & & \ddots \end{bmatrix}. \quad (4)$$

Let us denote each five-by-five block of the replication matrix by $R_{i,j}$. Then, $R_{i,i} = -I_5$ which represents a continuous reduction in the probability of all configurations due to the reduction in protein concentration. When the protein concentration of the i th five configurations is approximately half of that of the j th five configurations, then

$$R_{i,j} = \begin{bmatrix} 0 & 0 & 0 & 0 & 0 \\ 1 & 0.5 & 0 & 0 & 0 \\ 0 & 0.5 & 1 & 0 & 0 \\ 0 & 0 & 0 & 1 & 0 \\ 0 & 0 & 0 & 0 & 1 \end{bmatrix}. \quad (5)$$

The blocks (5) contain the information on phase change due to replication as discussed in Subsection II-C. Note that in computing the rates, one unit time is equal to one generation or the time between two replications.

A. Fluorescence Grid Based Aggregation

Aggregation or lumping of Markov chains has been known for a long time [10]. Here, we aggregate the states of Markov chain $\dot{P}(t) = AP(t)$ into groups of m_1, m_2, \dots states by a linear aggregation operator E :

$$E = \begin{bmatrix} \overbrace{1 \dots 1}^{m_1} & 0 \dots & & & \\ 0 \dots 0 & \overbrace{1 \dots 1}^{m_2} & 0 & \dots & \\ \vdots & & \ddots & & \end{bmatrix}.$$

Hence, the aggregated probability vector at time t , is equal to $P_{agg}(t) = EP(t)$. Taking the derivative of both sides $\dot{P}_{agg}(t) = E\dot{P}(t) = EAP(t)$. To find the dynamics of $P_{agg}(t)$ independent of $P(t)$, we define $P(t)$ as an approximate function of $P_{agg}(t)$. We assume that the probability of being in state i is equal to the aggregated probability of being in the group containing i divided by the number of states in that group, that is, $P(t) \simeq FP_{agg}(t)$, where F is the disaggregation operator, and is the MoorePenrose pseudoinverse of matrix E . Now, we write the approximated aggregated Markov chain:

$$\begin{aligned} P_a(0) &= P_{agg}(0) = EP(0), \\ \dot{P}_a(t) &= EAFP_a(t). \end{aligned}$$

Therefore, the evolution of $P_a(t)$ can approximate the evolution of the aggregated probability vector $P_{agg}(t)$. Before proceeding, let us define fluorescence rate matrix B_f to be equal to a protein production matrix B whose entries (e.g., β_{on}) are replaced by the corresponding fluorescence based production rates (e.g., $\beta_{f,on}$), see Section II-B.

Theorem III.1 (FGBA algorithm). *Consider a gene-protein system that can be described by the CME $\dot{P}(t) = (A + R)P(t)$, where A and R are explained in Section III. From the experimental fluorescence histograms, extract the fluorescence grids $\Delta_1, \Delta_2, \dots$ and the fluorescence rate matrix B_f . Then the solution to the following fluorescence based CME simulates the experimental fluorescence histogram:*

$$\dot{P}_f(t) = (A_f + R_f)P_f(t), \quad (6)$$

$$A_f = \begin{bmatrix} K - \frac{1}{\Delta_1}B_f & 0 & & \dots \\ \frac{1}{\Delta_1}B_f & K - \frac{1}{\Delta_2}B_f & 0 & \\ 0 & \frac{1}{\Delta_2}B_f & K - \frac{1}{\Delta_3}B_f & \\ \vdots & & & \ddots \end{bmatrix} + \begin{bmatrix} 0 & \frac{\gamma\Delta_1}{\Delta_2}I_5 & 0 & \dots \\ 0 & -\frac{\gamma\Delta_1}{\Delta_2}I_5 & \frac{\gamma(\Delta_1+\Delta_2)}{\Delta_3}I_5 & \\ 0 & 0 & -\frac{\gamma(\Delta_1+\Delta_2)}{\Delta_3}I_5 & \frac{\gamma(\Delta_1+\Delta_2+\Delta_3)}{\Delta_4}I_5 \\ \vdots & & & \ddots \end{bmatrix}.$$

The R_f is equivalent to R , in the sense that their (i, i) blocks are equal and the (i, j) 'th block in R_f is equal to submatrix (5) if the fluorescent intensity of the i th five configurations is approximately half of that of the j th five configurations. The initial condition $P_f(0)$ is computed based on the experimental initial state of the system, and

the phase variation matrix K can be any arbitrary matrix with zero column sum.

Proof: [Proof of Theorem III.1] First, we aggregate the states of the original CME by lumping the configurations with different protein numbers but same phase, that is, the configurations along the x-axis of Figure 3. Therefore, in above mentioned aggregation (disaggregation) operator, each entry E_{ij} (F_{ij}) is replaced by a five-by-five block $E_{ij}I_5$ ($F_{ij}I_5$), and we denote the new aggregation (disaggregation) operator by \bar{E} (\bar{F}). Employing these operators, the dynamics of the approximated aggregated CME will be:

$$\dot{P}_a(t) = (A_a + R_a)P_a(t), \quad \text{with } P_a(0) = \bar{E}P(0), \quad (7)$$

$$A_a = \bar{E}A\bar{F} = \begin{bmatrix} K - \frac{1}{m_1}B & 0 & & \dots \\ \frac{1}{m_1}B & K - \frac{1}{m_2}B & 0 & \\ 0 & \frac{1}{m_2}B & K - \frac{1}{m_3}B & 0 \\ \vdots & & & \ddots \end{bmatrix} + \begin{bmatrix} 0 & \frac{\gamma m_1}{m_2}I_5 & 0 & \dots \\ 0 & -\frac{\gamma m_1}{m_2}I_5 & \frac{\gamma(m_1+m_2)}{m_3}I_5 & 0 \\ 0 & 0 & -\frac{\gamma(m_1+m_2)}{m_3}I_5 & \frac{\gamma(m_1+m_2+m_3)}{m_4}I_5 & 0 \\ \vdots & & & \ddots & \end{bmatrix},$$

and it can be shown that $R_a = \bar{E}R\bar{F}$ is equivalent to R , in a similar sense as described for R_f in the theorem. In essence, the $(5i)$ th entry of $P_a(t)$ represents the probability of having a protein concentration between $m_1 + \dots + m_{i-1}$ and $m_1 + \dots + m_i$ proteins at time t . Notice that the group sizes m_i and the protein production rates in B are unknown. Let us define each group size m_i such that

$$m_i = \max\{x_g \in \mathbb{N} \mid \mu x_g \leq \Delta_i\}, \quad (8)$$

where x_g is the protein number and μ is the fluorescence-GFP ratio, defined in Section II-B. Roughly speaking, m_i is the number of proteins in one cell that increases the fluorescent intensity by Δ_i . Since for the experimental fluorescence grids in histograms of [11], m_i 's tend to be large, one can see that $\mu m_i \simeq \Delta_i$. Then, according to equation (2),

$$\frac{\beta_*}{m_i} \simeq \frac{\beta_{f,*}/\mu}{\Delta_i/\mu} = \frac{\beta_{f,*}}{\Delta_i}.$$

Moreover, for any $i, j, k \in \{1, 2, \dots\}$,

$$\frac{m_i + m_j}{m_k} \simeq \frac{(\Delta_i + \Delta_j)/\mu}{\Delta_k/\mu} = \frac{\Delta_i + \Delta_j}{\Delta_k}$$

Therefore, the fluorescence based CME (6) is equivalent to the approximated aggregated CME (7) under assumption $\mu m_i = \Delta_i$, while the unknown values μ and m_i 's are eliminated. Note that the i th entry of $P_f(t)$ is now the probability of cell having fluorescent intensity between $\Delta_1 + \dots + \Delta_{i-1}$ and $\Delta_1 + \dots + \Delta_i$. ■

Proposition III.2 (Evolution of error in FGBA method). *Consider the dynamics of a gene-protein system with only one gene phase, hence one protein production rate β , which is described by the CME $\dot{P}(t) = (A + R)P(t)$. By employing*

the FGBA method, this CME can be approximated by the fluorescence based CME $\dot{P}_f(t) = A_f P_f(t)$. Assume that:

- 1) there exists $r \in \mathbb{R}_{>0}$ such that the fluorescence grids satisfy $\Delta_i \leq r\Delta_{i-1}$; and
- 2) there exists $\epsilon \in \mathbb{R}_{>0}$ such that the group sizes satisfy $|\mu m_i - \Delta_i| \leq \epsilon$.

Let $e(t)$ denote the error in the expected value of the final probability distribution, that is,

$$e(t) = \mu E[P(t)] - E[P_f(t)],$$

then $e(t)$ can be upper bounded by a well defined function of $E[P_f(t)]$, ϵ , r , and the minimum and maximum of Δ_i 's.

Proof: The error in FGBA method is caused by two factors: aggregating the states of CME— e_1 ; and approximating the group sizes by the fluorescence grids multiplied by μ , instead of employing equation (8)— e_2 . Therefore,

$$e(t) = \mu E[P(t)] - E[P_f(t)] = (\mu E[P(t)] - \mu E[P_a(t)]) + (\mu E[P_a(t)] - E[P_f(t)]) = \mu e_1(t) + e_2(t).$$

We first compute the first term's upper bound:

$$e_1(t) = E[P(t)] - E[P_a(t)] = [0 \ 1 \ 2 \ \dots]P(t) - [0 \ m_1 \ m_1 + m_2 \ \dots]P_a(t).$$

Taking the derivative of both sides gives

$$\dot{e}_1(t) = [0 \ 1 \ \dots](A + R)P(t) - [0 \ m_1 \ m_1 + m_2 \ \dots](A_a + R_a)P_a(t),$$

where $A_a = EAF$, $R_a = ERF$, and E and F are the aggregation and disaggregation operators introduced in Section III-A. If $e_r(t)$ denotes the error caused by the replication factors, then

$$\begin{aligned} \dot{e}_1(t) &= e_r(t) + [\beta \ \beta - \gamma \ \beta - 2\gamma \ \dots]P(t) \\ &\quad - [\beta \ \beta - \frac{m_1^2}{m_2} \gamma \ \beta - \frac{m_2(m_1 + m_2)}{m_3} \gamma \ \dots]P_a(t) \\ &= \beta \mathbf{1}^T P(t) - \gamma [0 \ 1 \ 2 \ \dots]P(t) \\ &\quad - \beta \mathbf{1}^T P_a(t) + \gamma [0 \ \frac{m_1^2}{m_2} \ \frac{m_2(m_1 + m_2)}{m_3} \ \dots]P_a(t). \end{aligned}$$

Clearly $\mathbf{1}^T P_a(t) = \mathbf{1}^T P(t) = 1$, and it can be shown that $e_r(t) \simeq -\frac{1}{2}e_1(t)$. Adding and subtracting $\gamma e_1(t)$ gives

$$\begin{aligned} \dot{e}_1(t) &= \gamma e_1(t) - 0.5e_1(t) \\ &\quad + \gamma [0 \ \frac{m_1^2}{m_2} - m_1 \ \frac{m_2(m_1 + m_2)}{m_3} - (m_1 + m_2) \ \dots]P_a(t). \end{aligned}$$

Integrating from 0 to t gives

$$e_1(t) = e^{(\gamma-0.5)t}e_1(0) - \int_0^t e^{(\gamma-0.5)(t-\tau)} \gamma [0 \ \frac{m_1(m_2 - m_1)}{m_2} \ \frac{(m_1 + m_2)(m_3 - m_2)}{m_3} \ \dots]P_a(\tau) d\tau.$$

According to the initial value $P_a(0) = EP(0)$ we have

$$\begin{aligned} e_1(0) &= [0 \ 1 \ 2 \ \dots]P(0) - [0 \ m_1 \ m_1 + m_2 \ \dots]EP(0) \\ &= P_2(0) + \dots + (m_1 - 1)P_{m_1}(0) \\ &\quad + P_{m_1+1}(0) + \dots + (m_2 - 1)P_{m_2}(0) + \dots \end{aligned}$$

Clearly, $e_1(0)$ is a convex combination of $\{1, 2, \dots, m_{max}\}$, where m_{max} is the maximum group size. Hence, denoting the maximum fluorescence grid by Δ_{max} ,

$$e_1(0) \leq m_{max} \leq (\Delta_{max} + \epsilon)/\mu.$$

Therefore,

$$e_1(t) \leq \frac{\Delta_{max} + \epsilon}{\mu} e^{(\gamma-0.5)t} + |\max_i \{ \frac{m_i - m_{i-1}}{m_i} \}| \times \int_0^t e^{(\gamma-0.5)(t-\tau)} \gamma [0 \ m_1 \ m_1 + m_2 \ \dots]P_a(\tau) d\tau.$$

According to the assumptions 1 and 2, the value $\max_i \{ \frac{m_i - m_{i-1}}{m_i} \}$ can be upper bounded by $1 - \Delta_{min}/(r\Delta_{min} + r\epsilon + \epsilon)$, denoted \hat{r} :

$$e_1(t) \leq \frac{\Delta_{max} + \epsilon}{\mu} e^{(\gamma-0.5)t} + \hat{r} |1 - e^{-(\gamma-0.5)t}| \gamma E[P_a(t)].$$

Owing to negativity of $\gamma - 0.5$, as time goes to infinity the effect of initial error in e_1 goes to zero, and the effect of $E[P_a(t)]$ increases. Second, we compute the upper bound on error $e_2(t)$:

$$\begin{aligned} e_2(t) &= \mu [0 \ m_1 \ m_1 + m_2 \ \dots]P_a(t) \\ &\quad - [0 \ \Delta_1 \ \Delta_1 + \Delta_2 \ \dots]P_f(t) \\ &\leq [0 \ \Delta_1 \ \Delta_1 + \Delta_2 \ \dots]P_a(t) + \epsilon \mathbf{1}P_a(t) \\ &\quad - [0 \ \Delta_1 \ \Delta_1 + \Delta_2 \ \dots]P_f(t). \end{aligned}$$

The value $\epsilon \mathbf{1}P_a(t)$ is equal to ϵ , and using assumption 2, one can compute the scalar function $g(\epsilon, t)$ such that matrix $e^{A_a t}$ is entrywise smaller than $g(\epsilon, t)e^{A_f t}$, then for all i

$$\begin{aligned} [P_a(t)]_i &= [e^{A_a t} P_a(0)]_i \leq g(\epsilon, t) [e^{A_f t} P_a(0)]_i \\ &= g(\epsilon, t) [e^{A_f t} P_f(0)]_i = g(\epsilon, t) [P_f(t)]_i. \end{aligned}$$

Consequently,

$$e_2(t) \leq |g(\epsilon, t) - 1| E[P_f(t)] + \epsilon.$$

Finally, for total error $e(t) = \mu e_1(t) + e_2(t)$ we have

$$e(t) \leq (\Delta_{max} + \epsilon) e^{(\gamma-0.5)t} + \epsilon + \left(\mu \hat{r} |1 - e^{-(\gamma-0.5)t}| \gamma g(\epsilon, t) + |g(\epsilon, t) - 1| \right) E[P_f(t)].$$

■

IV. NUMERICAL RESULTS

In the experiments done by Lim et al., they let six separate colonies of *E. coli* grow for 20 hours. Each colony started from a cell that contains a *mutant* of *agn43* with Off expression state. The gene was mutated by deleting different parts of the upstream sequences of *agn43*. They claimed that the only difference in the dynamics of gene-protein system in these mutants is the ratio k_R/k_{-R} , see Figure 1. According to the steady state of phase varying dynamics, the ratio k_R/k_{-R} is equal to the fraction of unmethylated cells with Off expression, and is experimentally found to be 15.8, 8.9, 5.5, 4.3, 1, and 0.1 for the six mutants. Finally, they measured the fluorescence of the cells in each colony with flow cytometer and drew fluorescence histograms, see

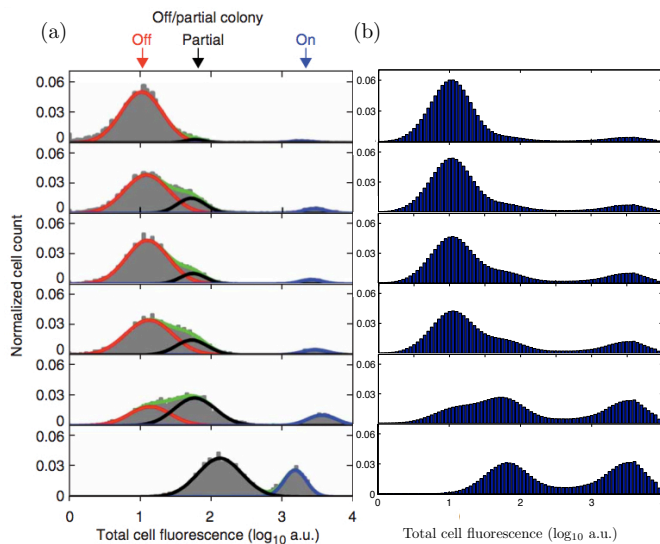


Fig. 4. (a) The experimental fluorescence histograms by (Lim et al. 2007) for six separate colonies, each starting from a mutant of *agn43* with different upstream length and Off expression state. Lim claims that the only difference in the dynamics of these mutants is the ratio $\frac{k_R}{k_{-R}}$, which is equal to 15.8, 8.9, 5.5, 4.3, 1, and 0.1 from top to bottom. Reprinted figure with permission from [11]. ©2007, by Nature Publishing Group. (b) The probability distribution of fluorescent intensity resulting from employing FGBA method to the CME (3). Each plot is obtained by solving the fluorescence based CME with one of the six mentioned values for $\frac{k_R}{k_{-R}}$, and the rest of parameters remains constant. These plots validates applicability of the FGBA method.

Figure 4.(a). In these histograms, the fluorescence grids Δ_i are equal to $10^{0.05i} - 10^{0.05(i-1)}$, where $i \in \{1, 2, \dots, 40\}$.

Now, to generate analytical fluorescence histograms, we employ the FGBA method stated in Theorem III.1 to the gene-protein systems of the mutants of *agn43*, that is, each system has one of the six mentioned values for k_R/k_{-R} , and the rest of parameters remains constant. Knowing the phase variation rates, Section II-A; degradation and fluorescence increase rates, Section II-B; and fluorescence grids, the fluorescence based transition matrix A_f of equation (6) can be computed. The resulting fluorescence based CME is an infinite dimensional ODE, hence we truncate this equation into a finite dimensional equation [12]. The resulting CME should contain configurations whose protein concentration is between zero and the maximum number of proteins in one cell, or equivalently, configurations whose fluorescence is less than the maximum value observed (10^4 a.u.). The solutions to the final CME's for the six mentioned mutants are plotted in Figure 4.(b).

V. CONCLUSION AND FUTURE WORK

As our main result, we introduced a new approach to justify a proposed dynamical model of protein expression by the experimental fluorescence histograms. We described the dynamics of a gene-protein system, whose protein production rates are unknown, with a chemical master equation (CME). Based on the resolution of the experimental histograms, we aggregated the states of the CME, however, the number of states in each aggregated group is also unknown. We proved that the unknown protein production rates and number of states in one group can be replaced by the fluorescence

increase rate and the fluorescence grids from the histograms, respectively. Therefore, the final probability distribution is the theoretical fluorescent histogram of the gene-protein model, and can be verified by the experimental fluorescence histograms. One future challenge is to compute the parameters of a gene-protein system via its fluorescence histograms. The solution to the CME, which is a probability distribution, has been numerically approximated from the parameters of the CME, see [18]. A reverse analysis of this method can help us find the parameters of a gene-protein system by experimental fluorescence histograms.

VI. ACKNOWLEDGMENTS

The authors would like to thank Marjan Van der Woude, João Hespanha, Brian Munsky, Sandra Dandach, and the anonymous reviewers for their helpful comments.

REFERENCES

- [1] J. H. Ahna, H. S. Chub, T. W. Kimb, I. S. Ohb, C. Y. Choia, G. H. Hahnc, C. G. Parkc, and D. M. Kimc. Cell-free synthesis of recombinant proteins from per-amplified genes at a comparable productivity to that of plasmid-based reactions. *Biochemical and Biophysical Research Communications*, 338:1346–1352, 2005.
- [2] U. Alon. *An Introduction to Systems Biology: Design Principles of Biological Circuits*. CRC Press, 2006.
- [3] P. Corish and C. Tyler Smith. Attenuation of green fluorescent protein half-life in mammalian cells. *Protein Engineering*, 12(12):1035–1040, 1999.
- [4] T. S. Gardner, C. R. Cantor, and J. J. Collins. Construction of a genetic toggle switch in *escherichia coli*. *Nature*, 403:339–342, 2000.
- [5] M. Hegland, C. Burden, L. Santoso, S. MacNamara, and H. Booth. A solver for the stochastic master equation applied to gene regulatory networks. *Journal of computational and applied mathematics*, 205(2):708–724, 2007.
- [6] I. R. Henderson, M. Meehan, and P. Owen. Antigen 43, a phase-variable bipartite outer membrane protein, determines colony morphology and autoaggregation in *escherichia coli* k-12. *FEMS Microbiology Letters*, 149(1):115–120, 1997.
- [7] I. R. Henderson and P. Owen. The major phase-variable outer membrane protein of *escherichia coli* structurally resembles the immunoglobulin a1 protease class of exported protein and is regulated by a novel mechanism involving *dam* and *oxyr*. *Journal of Bacteriology*, 181(7):2132–2141, 1999.
- [8] E. C. Howe and C. R. Johnson. Aggregation of markov processes: Axiomatization. *Journal of Theoretical Probability*, 2(2):201–208, 1989.
- [9] F.J. Isaacs, J. Hasty, C.R. Cantor, and J.J. Collins. Prediction and measurement of an autoregulatory genetic module. 100(13):7714–7719, 2003.
- [10] J. G. Kemeny and J. L. Snell. *Finite Markov Chains*. Springer, 1976.
- [11] H. N. Lim and A. van Oudenaarden. A multistep epigenetic switch enables the stable inheritance of dna methylation states. *Nature Genetics*, 39(2):268–275, 2007.
- [12] B. Munsky and M. Khammash. The finite state projection approach for the analysis of stochastic noise in gene networks. *IEEE Transactions on Automatic Control*, 53(1):201–214, 2008.
- [13] B. Munsky, B. Trinh, and M. Khammash. Listening to the noise: random fluctuations reveal gene network parameters. *Molecular Systems Biology*, 5(1), 2009.
- [14] M.R. Soboleski, J. Oaks, and W.P. Halford. Green fluorescent protein is a quantitative reporter of gene expression in individual eukaryotic cells. *The FASEB journal*, 19(3):440–442, 2005.
- [15] M. W. van der Woude. Re-examining the role and random nature of phase variation. *FEMS Microbiology Letters*, 254(2):190–197, 2006.
- [16] M. W. van der Woude and I. R. Henderson. Regulation and function of *ag43* (flu). *Annual Review of Microbiology*, 62:153–169, 2008.
- [17] J.V. Watson. *Introduction to Flow Cytometry*. Cambridge Univ Press, 1991.
- [18] J. Zhang, L. T. Watson, C. A. Beattie, and Y. Cao. Radial basis function collocation for the chemical master equation. *Int. J. Comput. Methods*, 7(03):477–498, 2010.