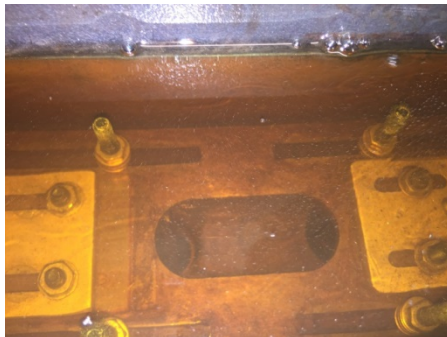


Temperature control: Bellows valve actuator

- We needed a long stroke actuator for a two way valve
- A bellows with ethylene glycol as working fluid was tested for a slider valve with dual outlets
- A spring on the valve can regulate the pressure (valve opening temperature)
- The hysteresis in the evaporation-condensation cycle was too large to give stable temperature regulations (delayed condensation compared with P-T equilibrium saturation curve). Thermostat opens ok (about 5 degrees C accuracy) but closes much slower (about 15 degrees C)



(Silje Fosseng Duley, Ragnhild Skahjem)