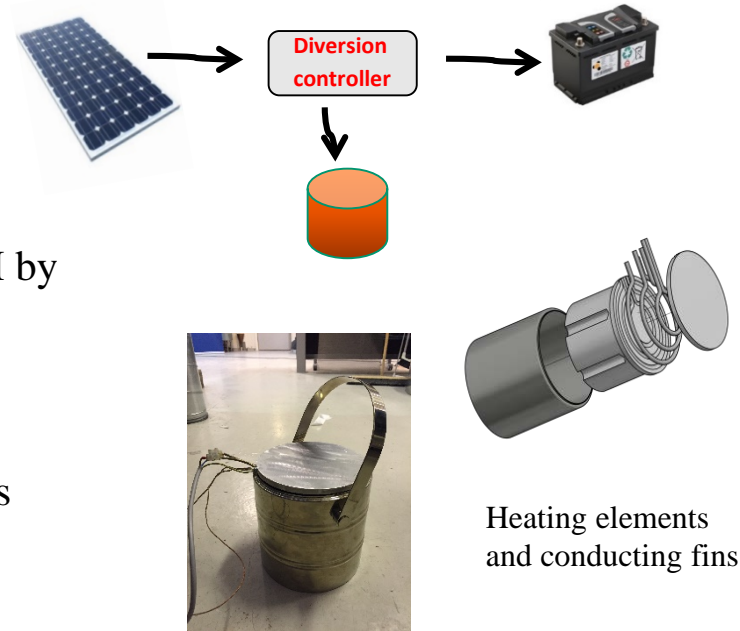


# Cooking beans on PCM heat storage

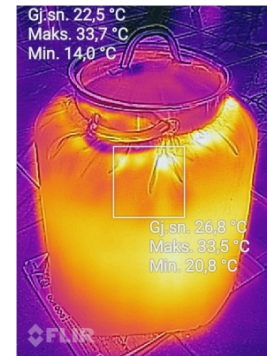
- When electrical battery is full, a diversion controller directs PV power to latent heat storage (PCM)
- Heating elements in top plate and heat transfer to PCM by conducting fins
- Leave pot with beans on the storage
- Temperature profile of latent heat storage suitable for beans: high initial power and reducing after the PCM is solidified



A small PV panel can over time accumulate cooking energy in a heat storage



Cooking on Solar Salt latent heat storage



We like beans