

# TMA 4315 Generalized Linear Models

## Who:

Lecturer: Ingelin Steinsland

Teaching assistant: Alessandro Ottavi

Students:

## What:

GLM: A class of linear models also for non-Gaussian data.  
Modeling, inference and evaluation.

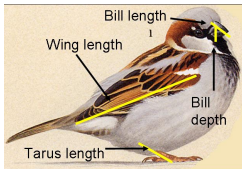
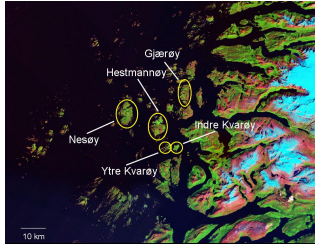
Why: Very useful!

## How:

- Lectures
- Four mandatory computer exercises. Groups of 2-3.
- Self-study



# House sparrows at Helgeland



# What:

- **Modeling:** Add GLM models in your toolbox, and how to use R for these models.
- **Inference:** Estimation of parameters.
- **Evaluation:** Able to evaluate and compare your models.

## Assignments

- Four mandatory, using R. Deadline: see plan.
- In groups of 2 (or 3).
- For one assignment, use you own data.
- Assistance: Alessandro (see plan for where and when)

## Self-study

- Text book (ch. 1-9).
- Some recommended 'pen and pencil' exercises.

## Lectures

- Follow the textbook.
- Small exercises during the classes.
- No lectures during assignment weeks (see plan).

- Assignments, part B 30%
  - Your own data:** Report (5-10 pages) and 5 min presentation.
  - Given Assignment:** One is resubmitted, should be for another model than the one you have for your own data.
- Final exam 70%. December 10th.