

FORELESNING 5

Våren 2004

5. februar

TMA4275 LEVETIDSANALYSE

Bo Lindqvist

Institutt for matematiske fag

NTNU

bo@math.ntnu.no <http://www.math.ntnu.no/~bo/>

PARAMETRIC LIFETIME ANALYSIS IN MINITAB

The screenshot displays the Minitab software interface. The 'Stat' menu is open, and the path 'Stat > Reliability/Survival > Distribution Analysis (Right Censoring) > Parametric Distribution Analysis...' is highlighted. The 'Worksheet 1 ***' window is visible below, showing a grid with columns C1 through C17 and rows 1 through 14. The status bar at the bottom indicates 'Perform parametric analysis with no/right censoring' and 'Editable'.

MINITAB - Untitled

File Edit Data Calc Stat Graph Editor Tools Window Help

Session

04.1

Welcome to Mini

- Basic Statistics
- Regression
- ANOVA
- DOE
- Control Charts
- Quality Tools
- Reliability/Survival
 - Demonstration Test Plans...
 - Estimation Test Plans...
 - Accelerated Life Test Plans...
 - Distribution Analysis (Right Censoring)
 - Distribution ID Plot...
 - Distribution Overview Plot...
 - Parametric Distribution Analysis...
 - Nonparametric Distribution Analysis...
 - Distribution Analysis (Arbitrary Censoring)
 - Parametric Growth Curve...
 - Nonparametric Growth Curve...
 - Accelerated Life Testing...
 - Regression with Life Data...
 - Probit Analysis...
- Multivariate
- Time Series
- Tables
- Nonparametrics
- EDA
- Power and Sample Size

Worksheet 1 ***

	C1	C2	C3	C4	C5	C6	C7	C8	C9	C10	C11	C12	C13	C14	C15	C16	C17
1																	
2																	
3																	
4																	
5																	
6																	
7																	
8																	
9																	
10																	
11																	
12																	
13																	
14																	

Pr... Editable 20:25

start Folder - Microsoft... NRK.no - Forsid... Adobe Acrobat ... Levetidsanalyse MINITAB - Untitled 20:25

DATA OPTIONS

RIGHT CENSORING:

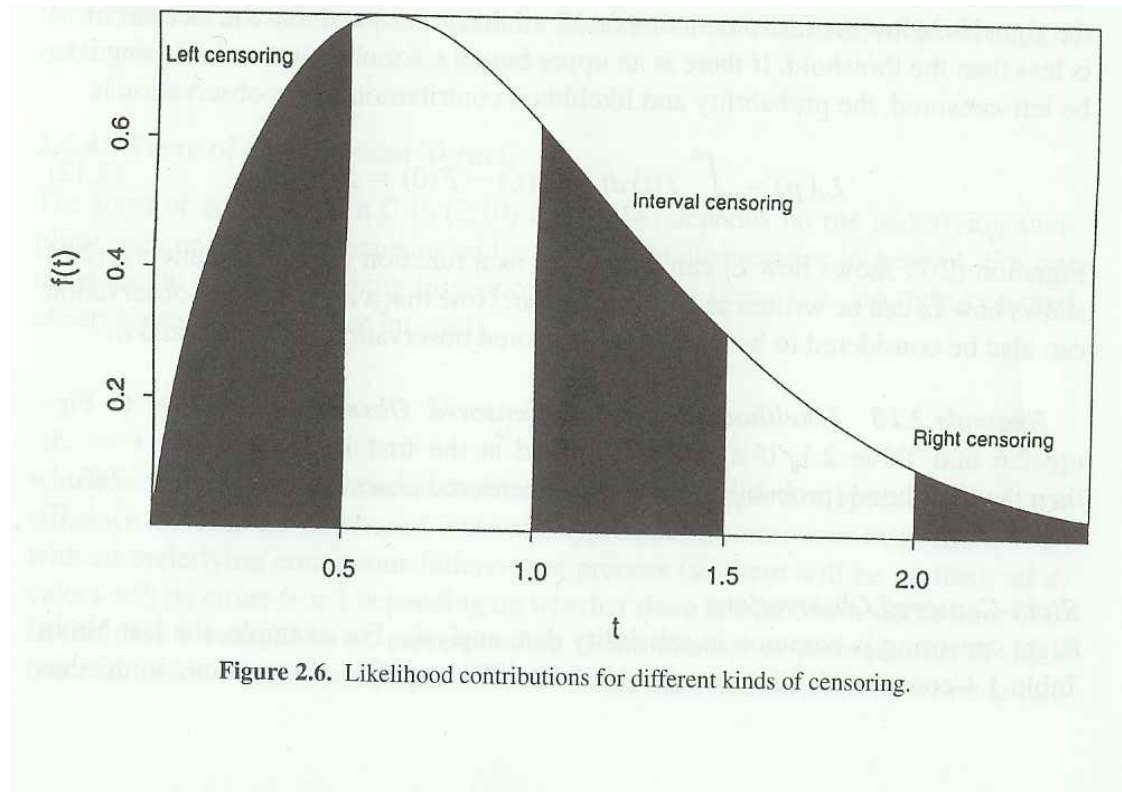
Y_i	δ_i
Observed time	Cens. status 1: Lifetime 0: Censoring

ARBITRARY CENSORING:

Start variable A_i	End variable B_i	
1.7	1.7	Exact lifetime 1.7
2.0	*	Right censoring at time 2.0, i.e. lifetime is > 2.0
*	0.5	Left censoring at time 0.5, i.e. lifetime is < 0.5
1.0	1.5	Interval censoring: Lifetime between 1.0 and 1.5

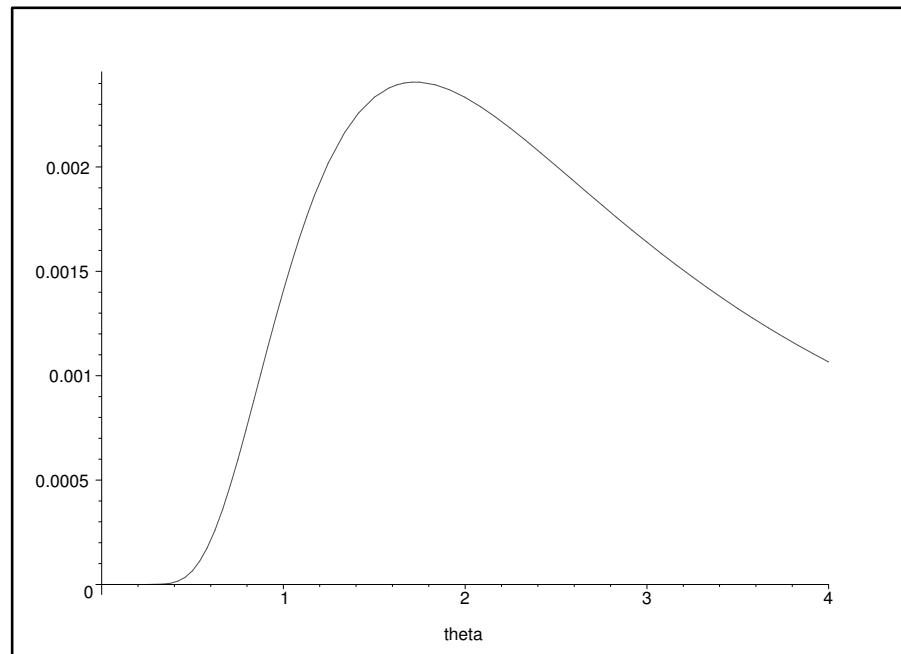
LIKELIHOOD CONTRIBUTION

Obs. type	Start variable A_i	End variable B_i	Likelihood contribution
Exact lifetime	1.7	1.7	$f(1.7; \theta)$
Right censoring	2.0	*	$1 - F(2.0; \theta)$
Left censoring	*	0.5	$F(0.5; \theta)$
Interval censoring	1.0	1.5	$F(1.5; \theta) - F(1.0; \theta)$



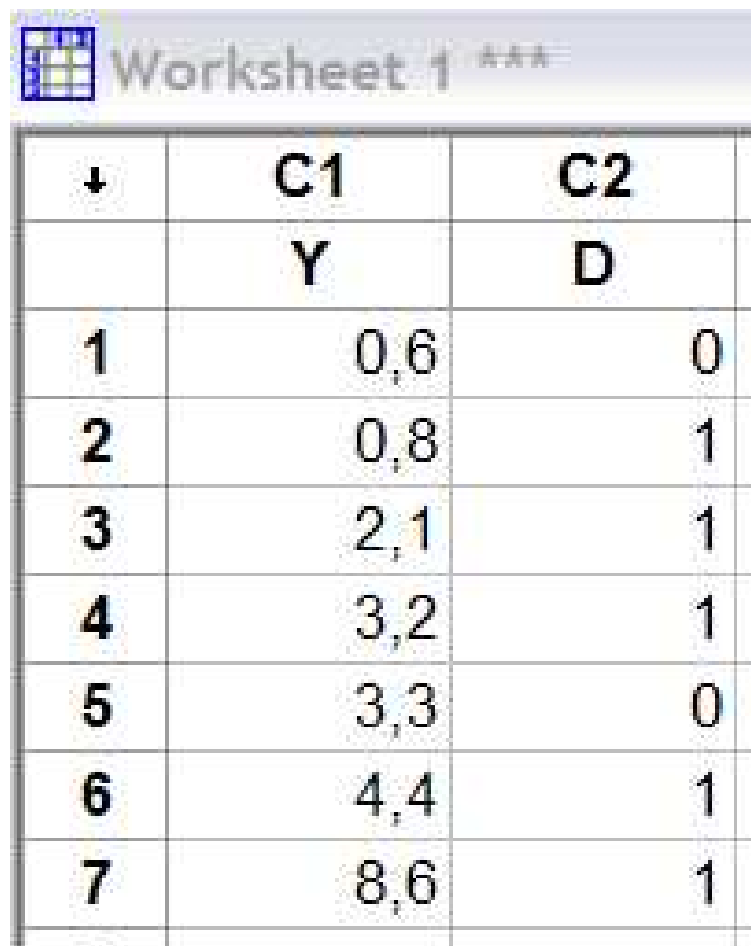
LIKELIHOOD FOR MODEL $f(t; \theta) = (1/\theta)e^{-t/\theta}$

$$L(\theta) = \left(\frac{1}{\theta}e^{-1.7/\theta}\right) \cdot (e^{-2.0/\theta}) \cdot (1 - e^{-0.5/\theta}) \cdot (e^{-1.0/\theta} - e^{-1.5/\theta})$$



Maximum likelihood estimate: $\hat{\theta} = 1.725$

EXAMPLE: RIGHT CENSORED DATA



+	C1	C2
	Y	D
1	0,6	0
2	0,8	1
3	2,1	1
4	3,2	1
5	3,3	0
6	4,4	1
7	8,6	1
-		

Distribution Analysis: Y

Variable: Y

Censoring Information	Count
Uncensored value	5
Right censored value	2

Censoring value: D = 0

Estimation Method: Maximum Likelihood

Distribution: Exponential

Parameter Estimates

Parameter	Estimate	Standard Error	95,0% Normal CI Lower	95,0% Normal CI Upper
Mean	4,6	2,05718	1,91465	11,0516

Log-Likelihood = -12,630

Goodness-of-Fit

Anderson-Darling (adjusted) = 3,767

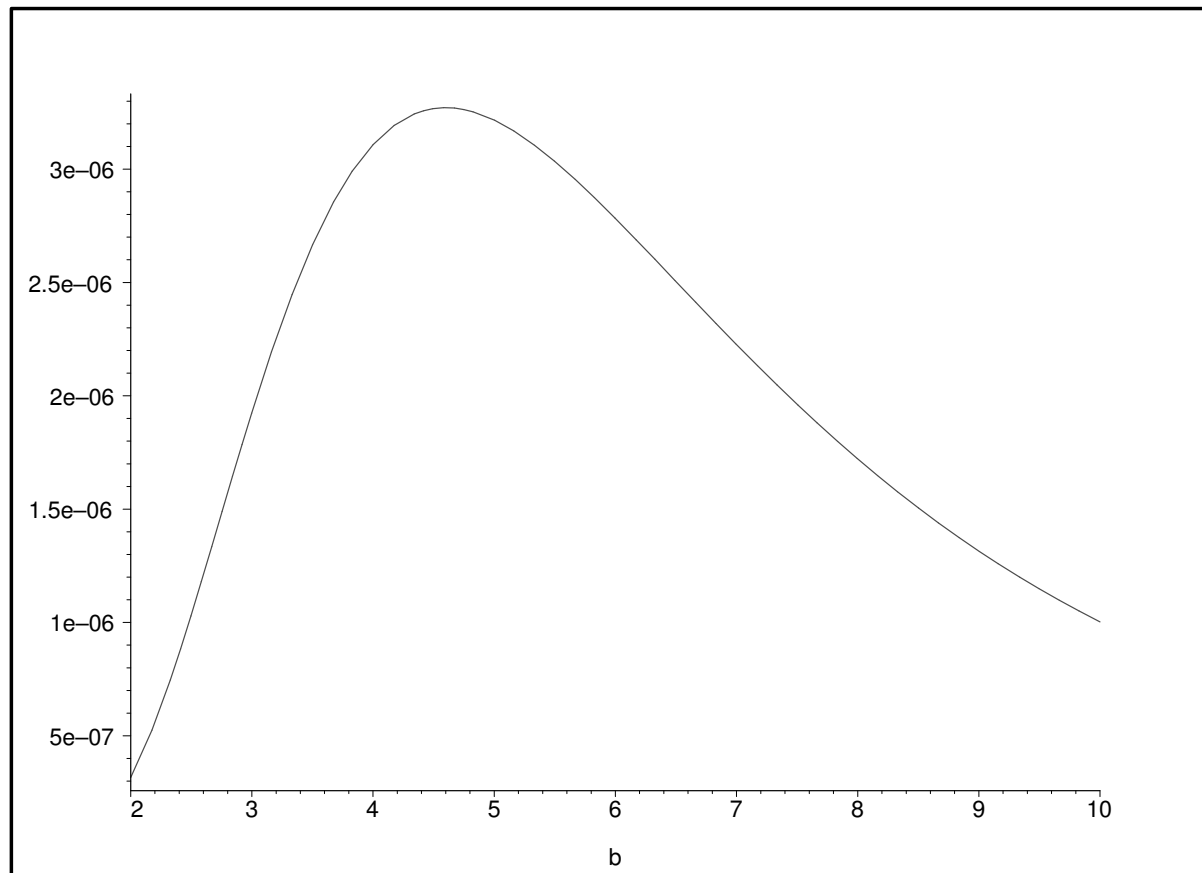
Characteristics of Distribution

	Estimate	Standard Error	95,0% Normal CI Lower	95,0% Normal CI Upper
Mean (MTTF)	4,6	2,05718	1,91465	11,0516
Standard Deviation	4,6	2,05718	1,91465	11,0516
Median	3,18848	1,42593	1,32713	7,66041
First Quartile(Q1)	1,32334	0,591815	0,550810	3,17936
Third Quartile(Q3)	6,37695	2,85186	2,65427	15,3208
Interquartile Range (IQR)	5,05362	2,26005	2,10346	12,1415

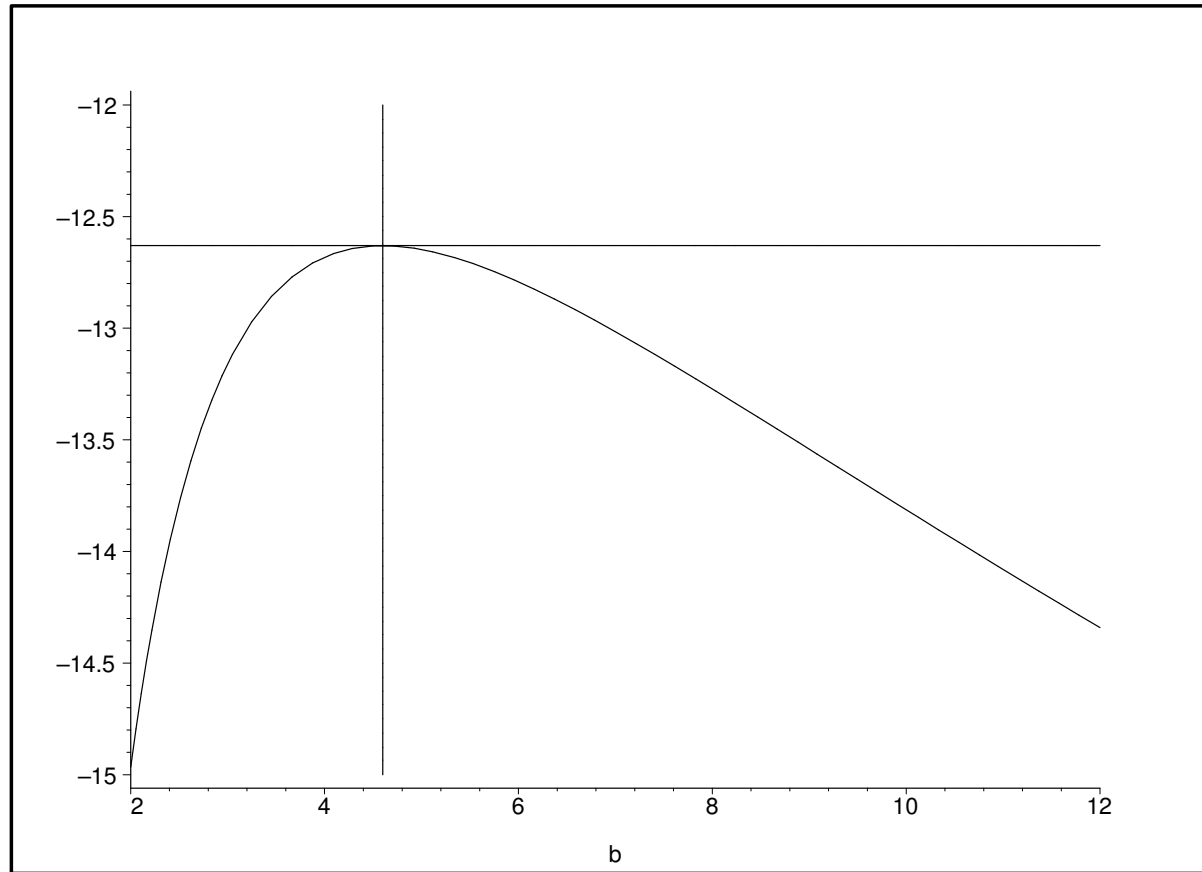
Table of Percentiles

Percent	Percentile	Standard Error	95,0% Normal CI	
			Lower	Upper
1	0,0462315	0,0206754	0,0192429	0,111073
2	0,0929325	0,0415607	0,0386811	0,223273
3	0,140112	0,0626601	0,0583187	0,336624
4	0,187781	0,0839783	0,0781597	0,451150
5	0,235949	0,105520	0,0982086	0,566875
6	0,284627	0,127289	0,118470	0,683825
7	0,333825	0,149291	0,138947	0,802025
8	0,383555	0,171531	0,159646	0,921504
9	0,433829	0,194014	0,180572	1,04229
10	0,484658	0,216746	0,201728	1,16441
20	1,02646	0,459047	0,427241	2,46610
30	1,64070	0,733745	0,682907	3,94184
40	2,34980	1,05086	0,978051	5,64546
50	3,18848	1,42593	1,32713	7,66041
60	4,21494	1,88498	1,75437	10,1265
70	5,53827	2,47679	2,30518	13,3059
80	7,40341	3,31091	3,08151	17,7869
90	10,5919	4,73684	4,40864	25,4473
91	11,0765	4,95358	4,61037	26,6117
92	11,6184	5,19588	4,83588	27,9134
93	12,2326	5,47058	5,09155	29,3892
94	12,9417	5,78770	5,38669	31,0928
95	13,7804	6,16277	5,73577	33,1078
96	14,8068	6,62182	6,16301	35,5739
97	16,1302	7,21363	6,71382	38,7532
98	17,9953	8,04775	7,49015	43,2343
99	21,1838	9,47368	8,81728	50,8947

LIKELIHOOD FUNCTION FOR MODEL $f(t; \theta) = (1/\theta)e^{-1/\theta}$

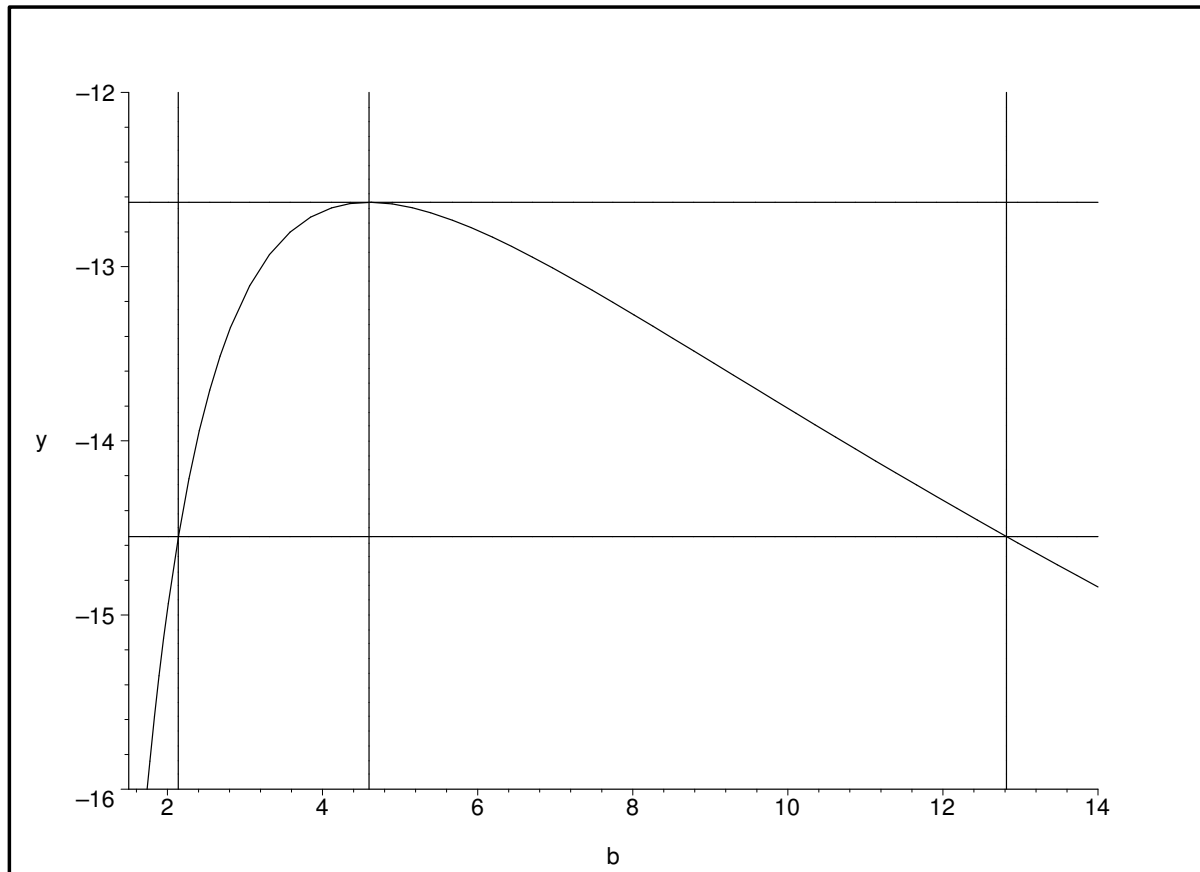


LOG-LIKELIHOOD FUNCTION



Maximum likelihood estimate: $\hat{\theta} = 4.6$

LOG-LIKELIHOOD FUNCTION



Probability Plot for Y

Exponential - 95% CI
Censoring Column in D - ML Estimates

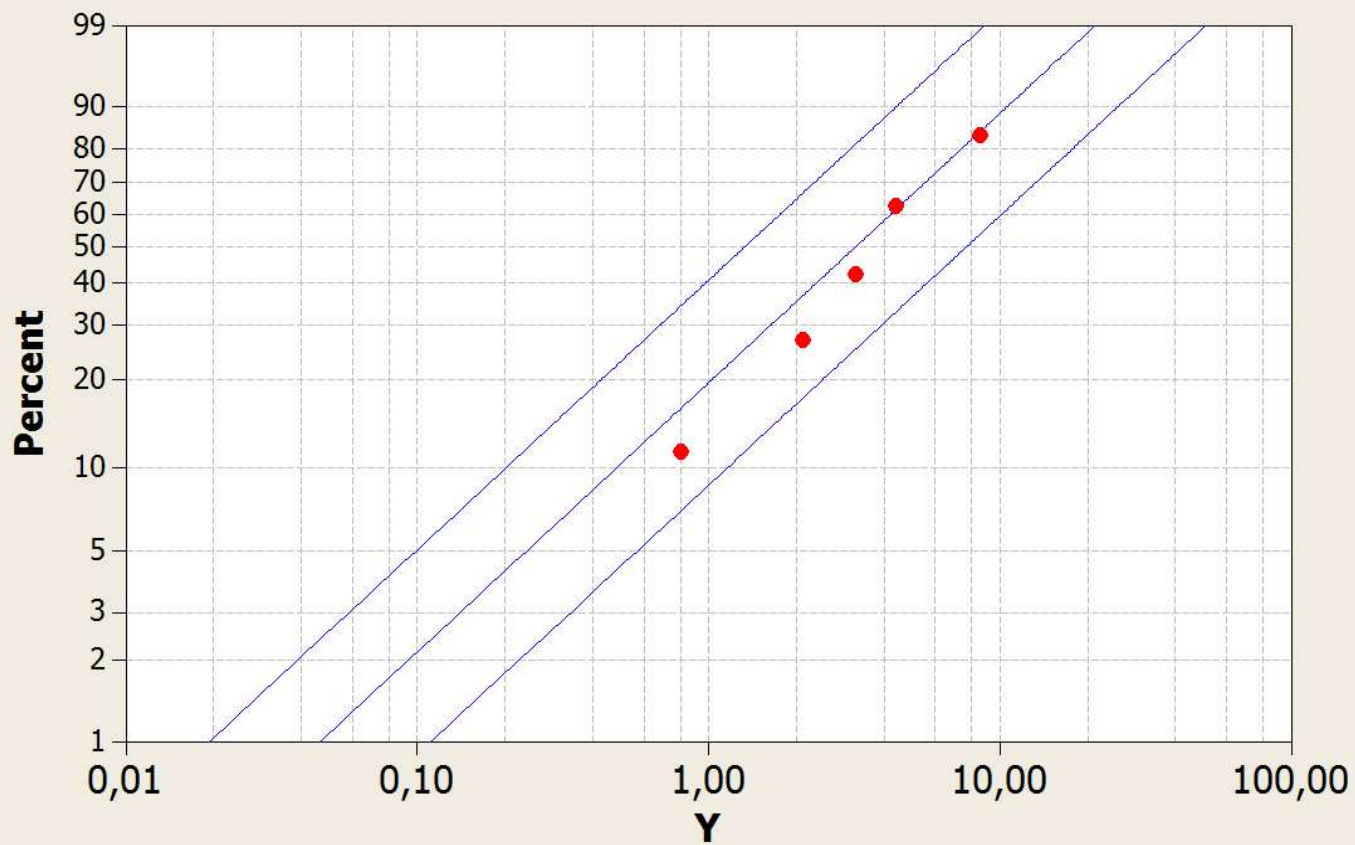


Table of Statistics	
Mean	4,6
StDev	4,6
Median	3,18848
IQR	5,05362
Failure	5
Censor	2
AD*	3,767



Method – Probability Plot for Uncensored/Right Censored Data

[main topic](#)

Probability plots are based on a scheme that plots the observed failure times (or a transformation of the failure times) on the x-axis vs. the estimated cumulative probabilities (p) on the y-axis. The cumulative probabilities are transformed. Transformations of both the x and y data are needed to ensure that the plotted y values are a linear function of the plotted x values. To help assess the linearity of the plotted data, a fitted line is also drawn on the probability plots. The table below shows how the actual x and y plot points are constructed:

Distribution	x coordinate	y coordinate
Weibull	$\ln(\text{failure time})$	$\ln(-\ln(1 - p))$
Extreme value	failure time	$\ln(-\ln(1 - p))$
Exponential	failure time	$-\ln(1-p)$
Normal	failure time	$\Phi^{-1}(p)$
Lognormal basee	$\ln(\text{failure time})$	$\Phi^{-1}(p)$
Lognormal base10	$\log_{10}(\text{failure time})$	$\Phi^{-1}(p)$
Logistic	failure time	$\ln\left(\frac{p}{1-p}\right)$
Loglogistic	$\ln(\text{failure time})$	$\ln\left(\frac{p}{1-p}\right)$

where

$\Phi^{-1}(p)$ = value of standard normal distribution, Z, such that $\text{prob}(Z \leq \Phi^{-1}(p)) = p$

$\ln(x)$ = natural log of x

$\log_{10}(x)$ = log base 10 of x

Minitab estimates the cumulative probabilities (p) using the Default, Modified Kaplan-Meier, Herd-Johnson, or Kaplan-Meier method. The Default method is the normal score for uncensored data; the modified Kaplan-Meier method for censored data. Each of these methods generates nonparametric estimates of F(t), the cumulative distribution function for the random variable T, which is time to failure.

Note If the largest observation is uncensored, the Kaplan-Meier method results in $p=1$ for the largest uncensored observation. In this case, the Kaplan-Meier estimate for the largest observation results in a number that cannot be used in the plot. This problem is corrected by recalculating the largest p as 90% of the distance between the prior p and 1.

This table displays the differences among the methods. For a sample of n observations, let $x(1), x(2), \dots, x(n)$ be the order statistics, or the data ordered from smallest to largest. Then i is the rank of the ith ordered observation $x(i)$. The formulas are as follows:

For uncensored data...

This method . . .	Uses this equation
Normal score (default)	$\frac{i - 3/8}{n + 1/4}$
Modified Kaplan-Meier	$\frac{i - 1/2}{n}$
Herd-Johnson	$\frac{i}{n + 1}$
Kaplan-Meier	$\frac{i}{n}$

For censored data...

This method...

Modified Kaplan-Meier (default)

Uses this equation

$$P_i = 1 - \frac{\langle 1 - P'_i \rangle + \langle 1 - P'_{i-1} \rangle}{2}$$

where P'_i is the P_i from the Kaplan-Meier estimate and $P'_0 = 0$.

Herd-Johnson estimate

$$P_i = 1 - \prod_{j=1:i} \frac{(n - j + 1)}{\langle n - j + 2 \rangle^{\delta_j}}$$

Kaplan-Meier product limit estimate

$$P_i = 1 - \prod_{j=1:i} \frac{(n - j)}{\langle n - j + 1 \rangle^{\delta_j}}$$

where

$\delta_j = 0$ if the j th observation is censored

1 if the j th observation is uncensored

If there are tied failure times in the data, either all points (default), the average (median), or the maximum of the tied points is plotted. If the tie involves failures and suspensions, the failures are considered to occur before the suspensions.

Row	C1	C2
1	0,35	1
2	0,50	0
3	0,75	0
4	1,00	1
5	1,30	1
6	1,80	1
7	3,00	0
8	3,15	0
9	4,85	0
10	5,50	1
11	5,50	0
12	6,25	0

Variable: C1

Censoring Information Count Uncensored value
 5 Right censored value
 7 Censoring value: C2 = 0

Estimation Method: Maximum Likelihood Distribution: Exponential

Parameter Estimates

Parameter	Estimate	Standard Error	95,0% Normal CI	
			Lower	Upper

Shape	1,00000			
-------	---------	--	--	--

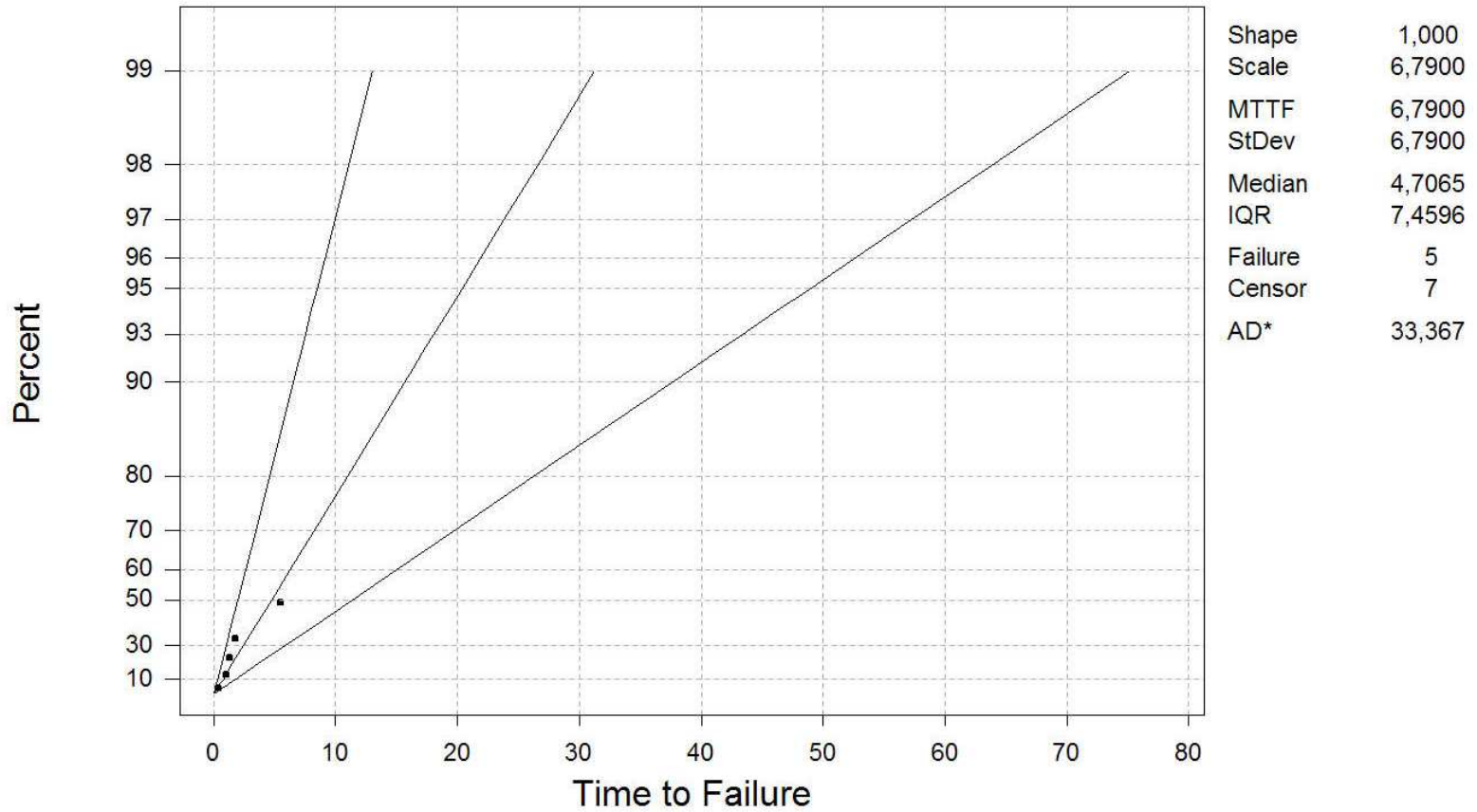
Scale	6,790	3,037	2,826	16,313
-------	-------	-------	-------	--------

Log-Likelihood = -14,577

Probability Plot for C1

Exponential Distribution - ML Estimates - 95,0% CI

Censoring Column in C2



Variable: C1

Censoring Information Count Uncensored value
5 Right censored value 7 Censoring value: C2 = 0

Estimation Method: Maximum Likelihood
Distribution: Weibull

Parameter Estimates

Parameter	Estimate	Standard Error	95,0% Normal CI	
			Lower	Upper
Shape	0,9780	0,3694	0,4665	2,0504
Scale	6,880			
	3,517	2,526	18,740	

Log-Likelihood = -14,576

Probability Plot for C1

Weibull Distribution - ML Estimates - 95,0% CI

Censoring Column in C2

