

**TABLE 14.3: Propellant Burning Rates**

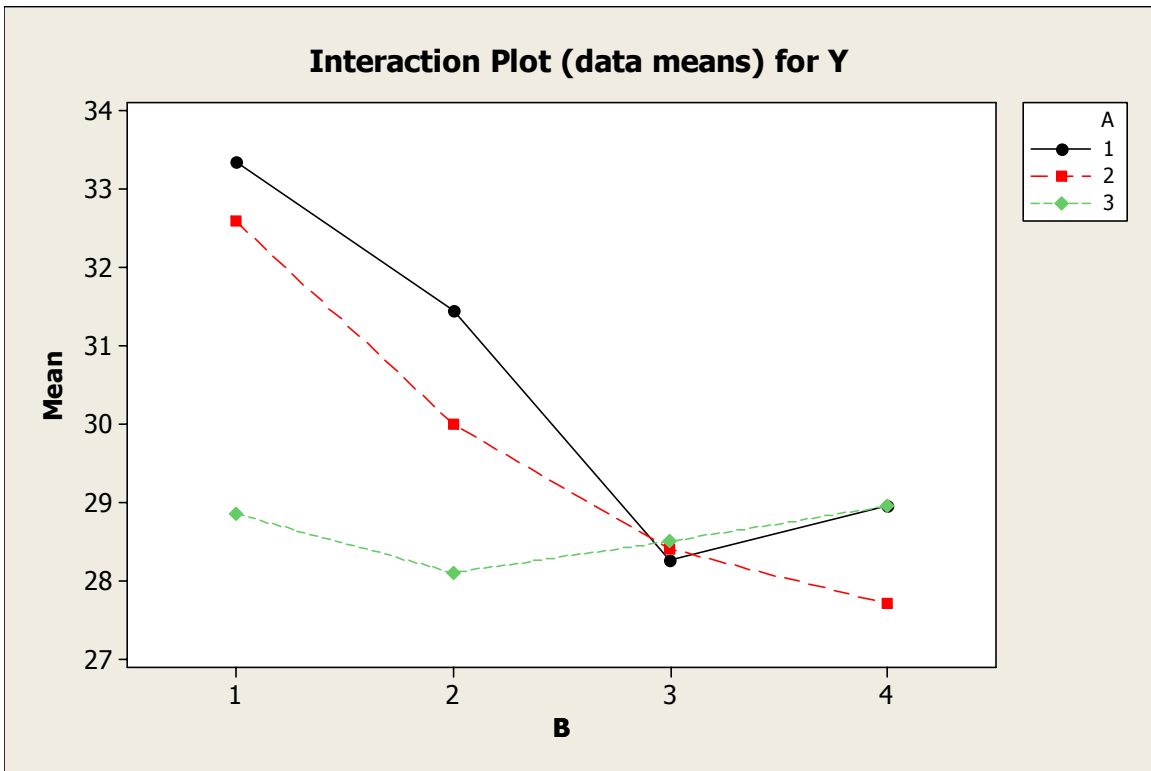
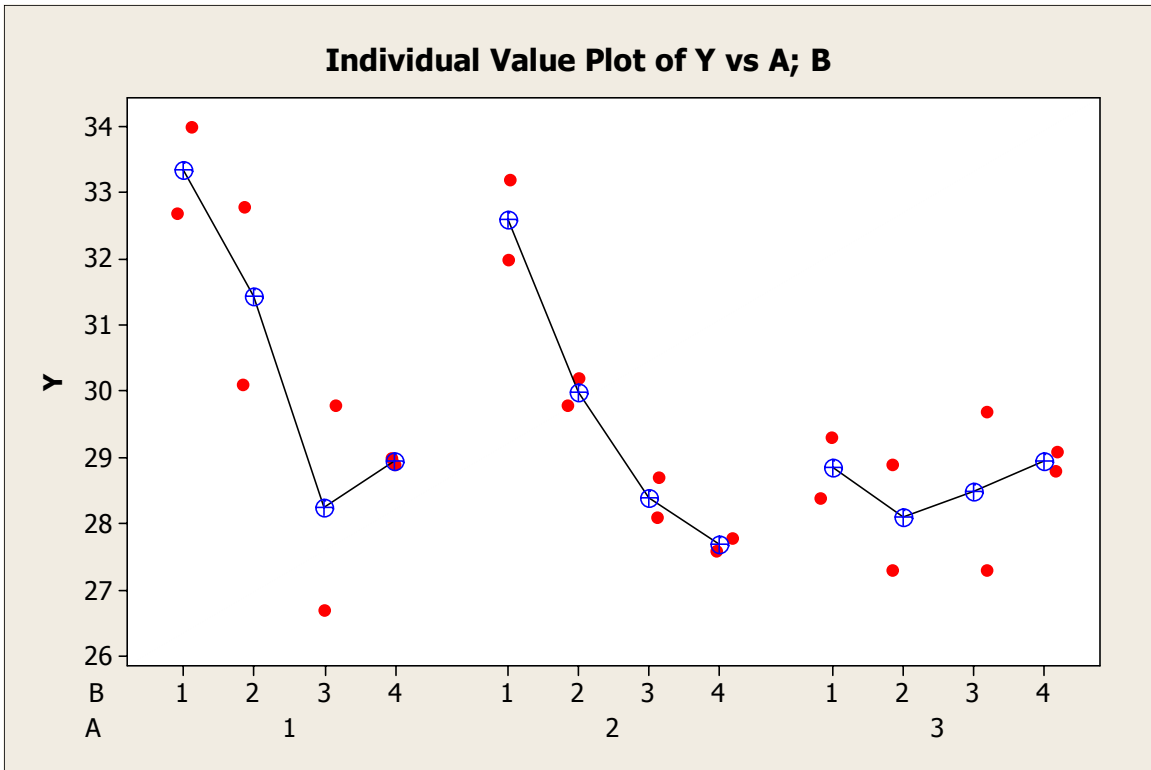
**Data Display**

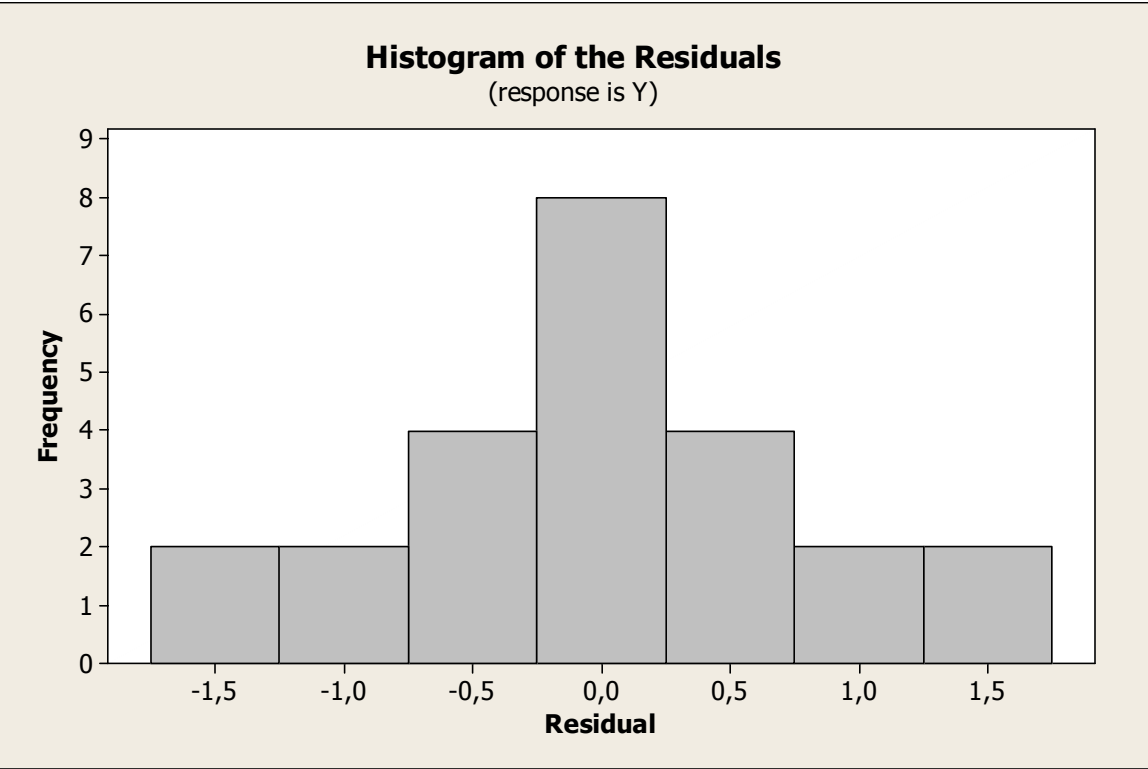
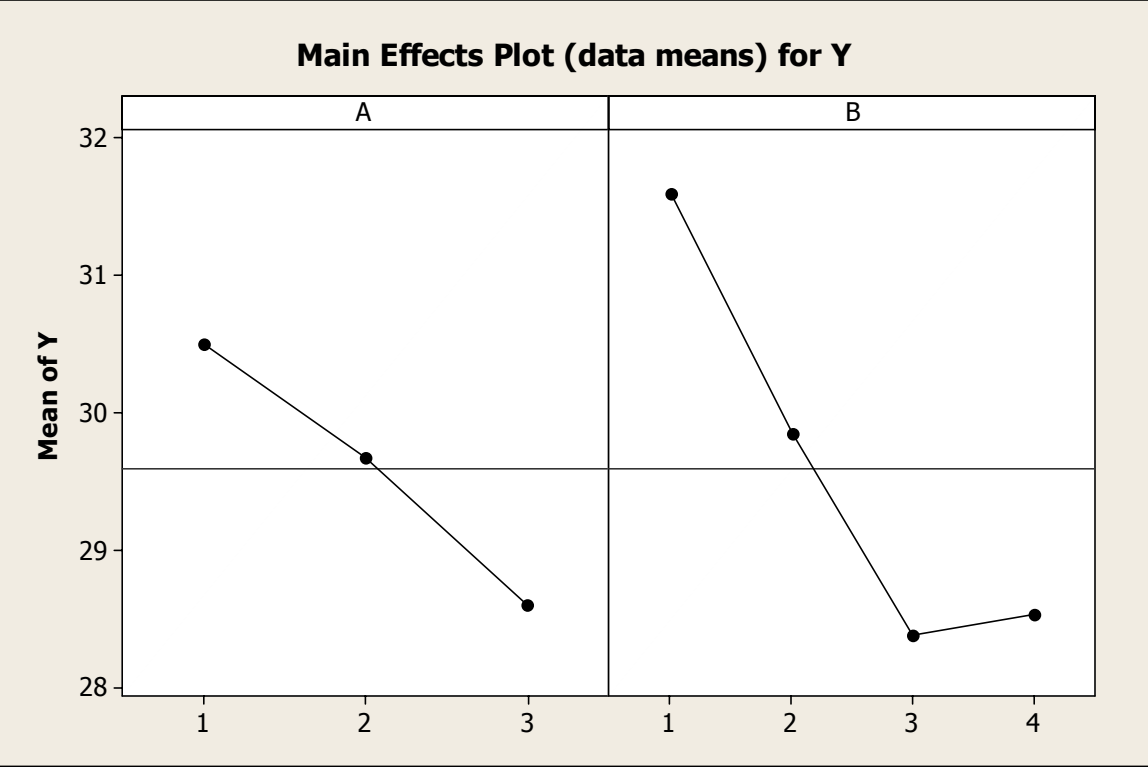
Row	Y	A	B
1	34,0	1	1
2	32,0	2	1
3	28,4	3	1
4	32,7	1	1
5	33,2	2	1
6	29,3	3	1
7	30,1	1	2
8	30,2	2	2
9	27,3	3	2
10	32,8	1	2
11	29,8	2	2
12	28,9	3	2
13	29,8	1	3
14	28,7	2	3
15	29,7	3	3
16	26,7	1	3
17	28,1	2	3
18	27,3	3	3
19	29,0	1	4
20	27,6	2	4
21	28,8	3	4
22	28,9	1	4
23	27,8	2	4
24	29,1	3	4

**Two-way ANOVA: Y versus A; B**

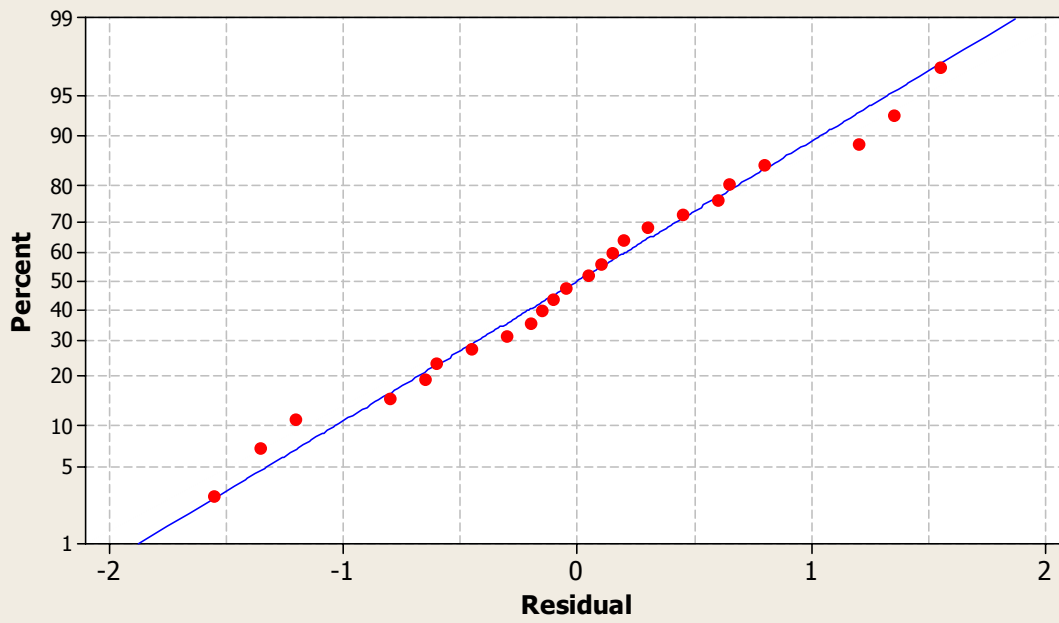
Source	DF	SS	MS	F	P
A	2	14,5233	7,2617	5,84	0,017
B	3	40,0817	13,3606	10,75	0,001
Interaction	6	22,1633	3,6939	2,97	0,051
Error	12	14,9100	1,2425		
Total	23	91,6783			

S = 1,115    R-Sq = 83,74%    R-Sq(adj) = 68,83%





**Normal Probability Plot of the Residuals**  
(response is Y)



**Residuals Versus Y**  
(response is Y)

