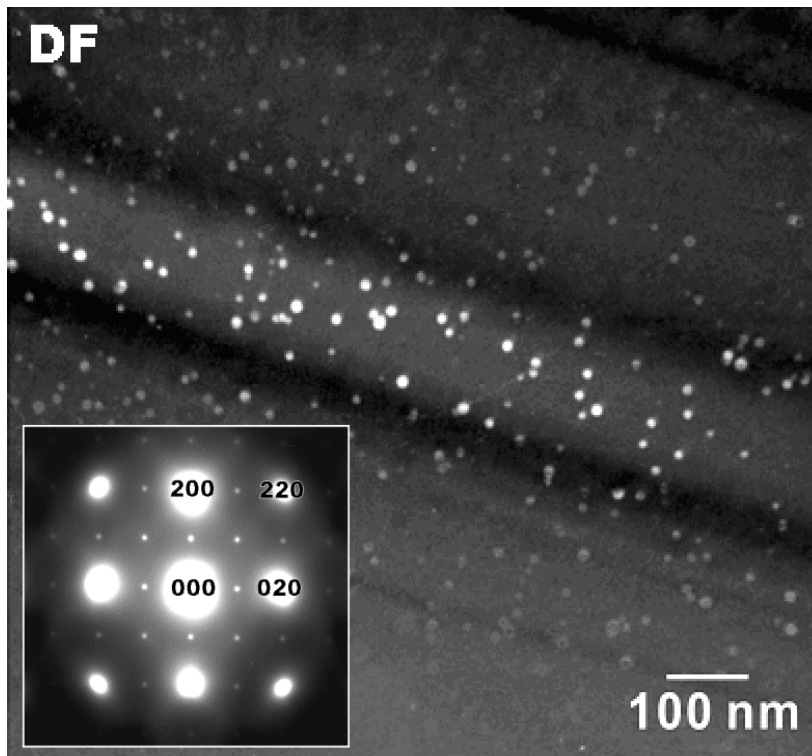




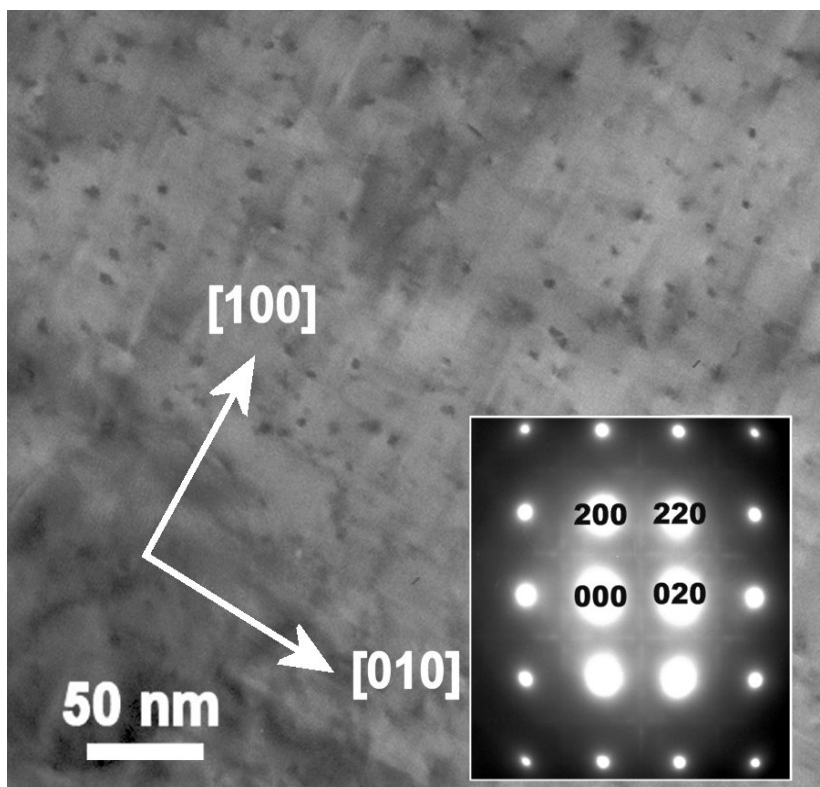
January 10 2006

### Conventional precipitates diffraction patterns from the JEM-2010 at EM lab



Al-Sc-Zr alloy with homogeneous  $\text{Al}_3(\text{Hf, Sc, Zr})$  dispersoids (around 10nm in diameter).

The dispersoids contributed the smaller bright spots along matrix Al [001] diffraction.



Al-Mg-Si specimen with semi-coherent  $\beta'$ - $\text{Mg}_2\text{Si}$  phases.

The  $\beta'$ - $\text{Mg}_2\text{Si}$  precipitates contributed the tiny bright streaks along matrix Al [001] diffraction.