



KYSTVERKET

NORWEGIAN COASTAL ADMINISTRATION

---

# Developing the Norwegian coastline

## Future fairways

---

Ruben Rostad – Norwegian Coastal Administration, Center for Construction  
Trondheim, 29.04.2019

# Content

---

- Shortly about the Norwegian Coastal Administration (video)
- Center for Construction
- Change of ministry and regional reform
- Portfolio and new thinking





# Center for Construction

---

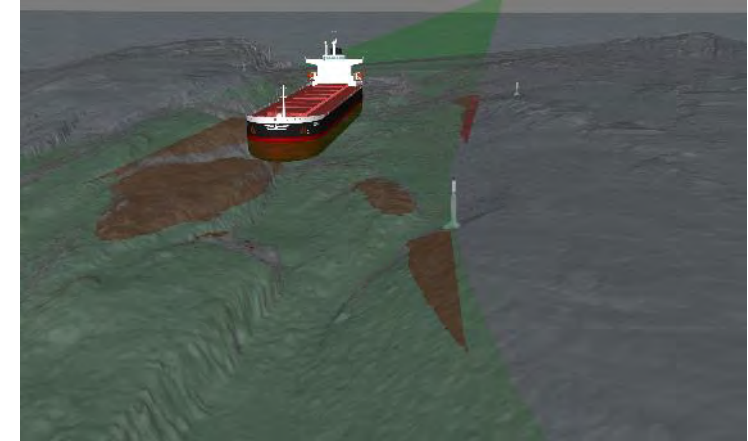
- 17 employees with expertise with high competence within coastal engineering.
  - Project management
  - Construction management
  - Environmental advisor
- Construction network in NCA
  - About 35 - 40 persons
  - 2-3 from each of the 5 regions
  - 2 from Coastal authority department
- The center is located at 1 of the 5 regions – in Kabelvåg, Lofoten



# Center for Construction - What are we doing?

---

- Constructing jetty and breakwaters
- Deepening harbours and fairways
- Foundation for beacons in exposed waters
- Coordinating funding applications for local harbours and municipalities
- Coordinating early phase of harbour and fairway projects and funding of maintenance
- NCA has authority and responsibility from the Swedish border in south to the Russian border in north – a coastline almost 29 000 km long, or just over 100 000 km including islands



# Becoming a transport agency

---

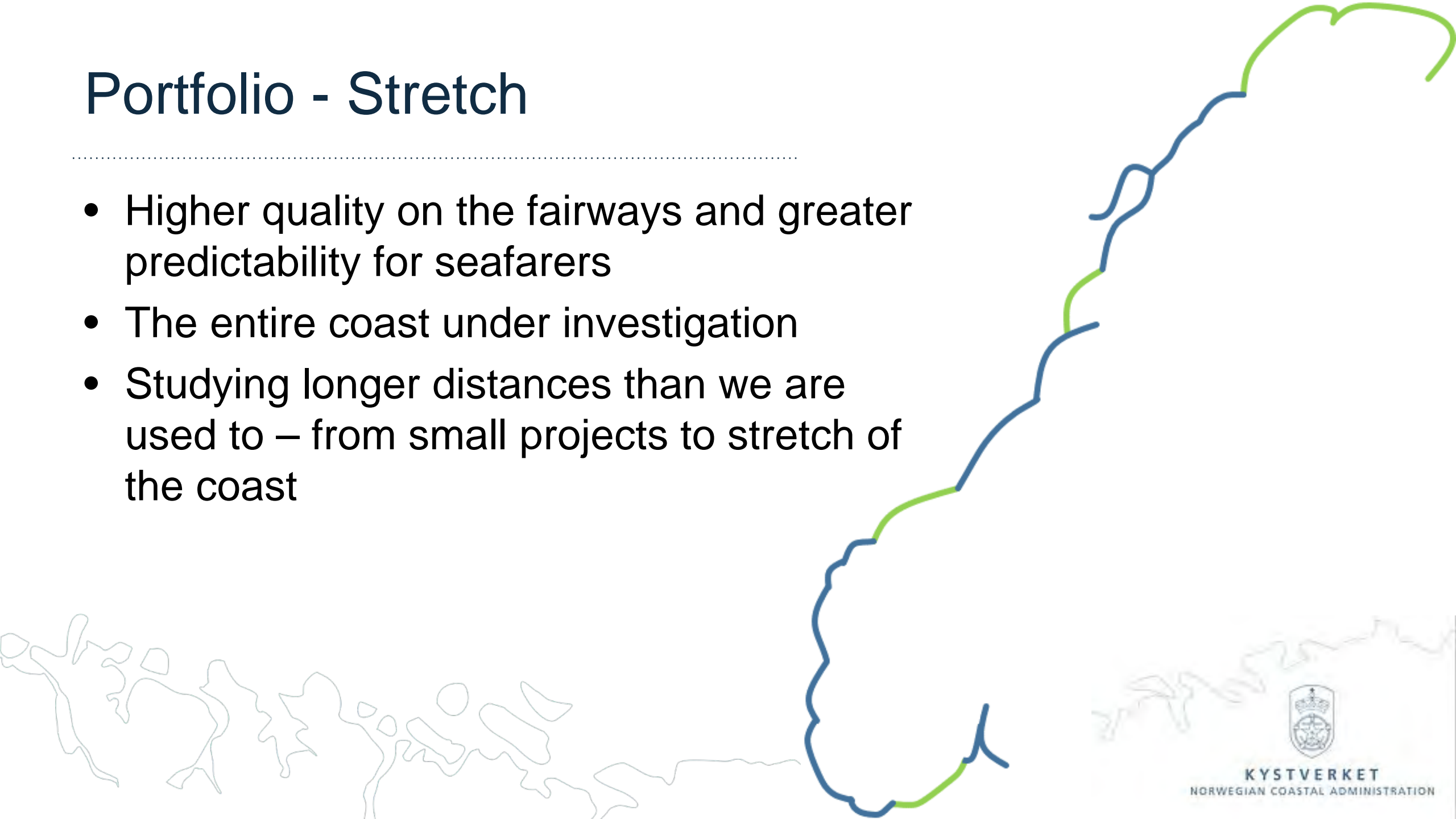
- From the Ministry of Coastal and Fisheries to the Ministry of Transport and Communications in 2013 -> National Transport Plan (NTP)
- Increased share of fairway projects
- Start looking at the connection between different fairway projects
- The region reform



# Portfolio - Stretch

---

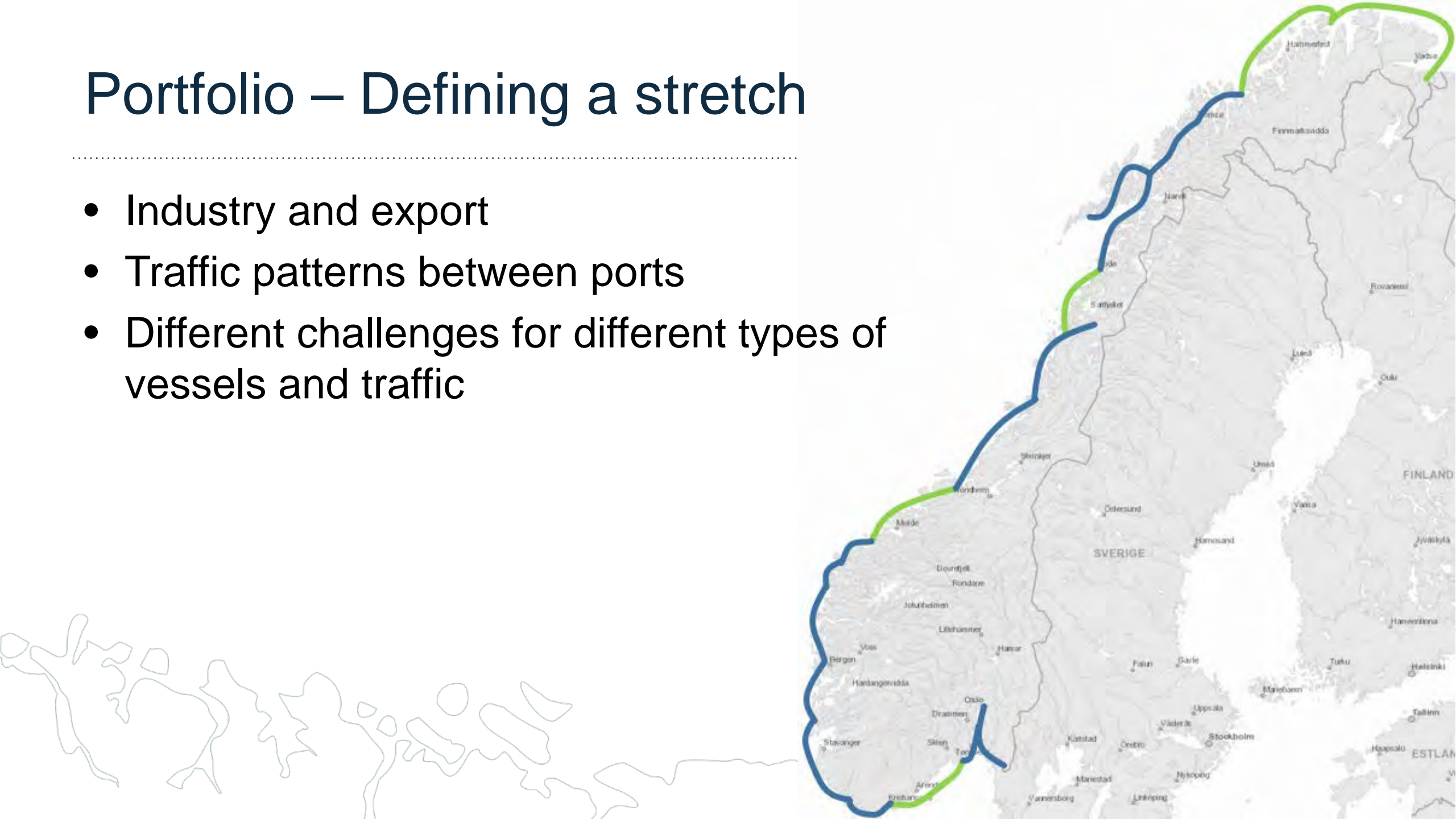
- Higher quality on the fairways and greater predictability for seafarers
- The entire coast under investigation
- Studying longer distances than we are used to – from small projects to stretch of the coast



# Portfolio – Defining a stretch

---

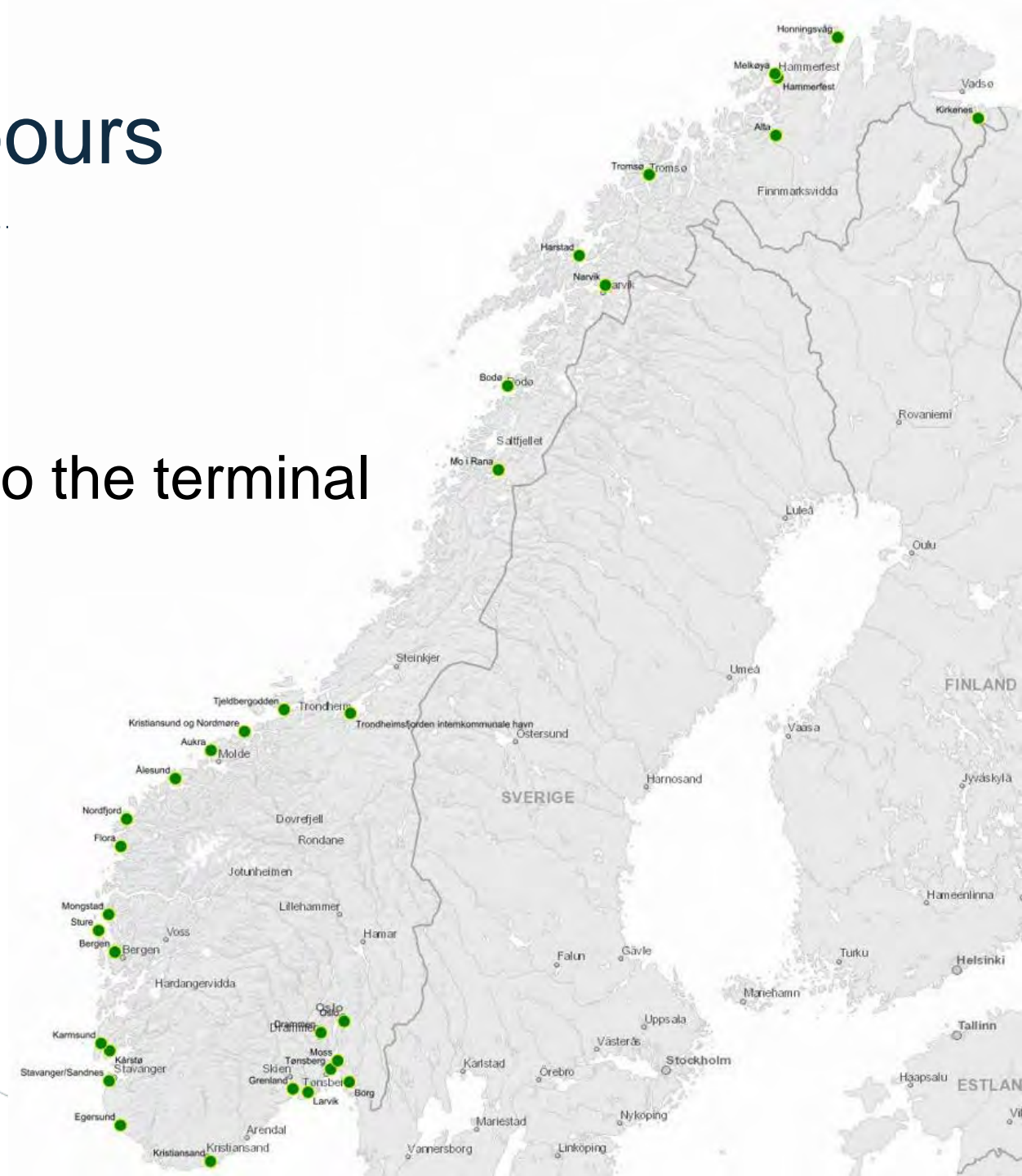
- Industry and export
- Traffic patterns between ports
- Different challenges for different types of vessels and traffic





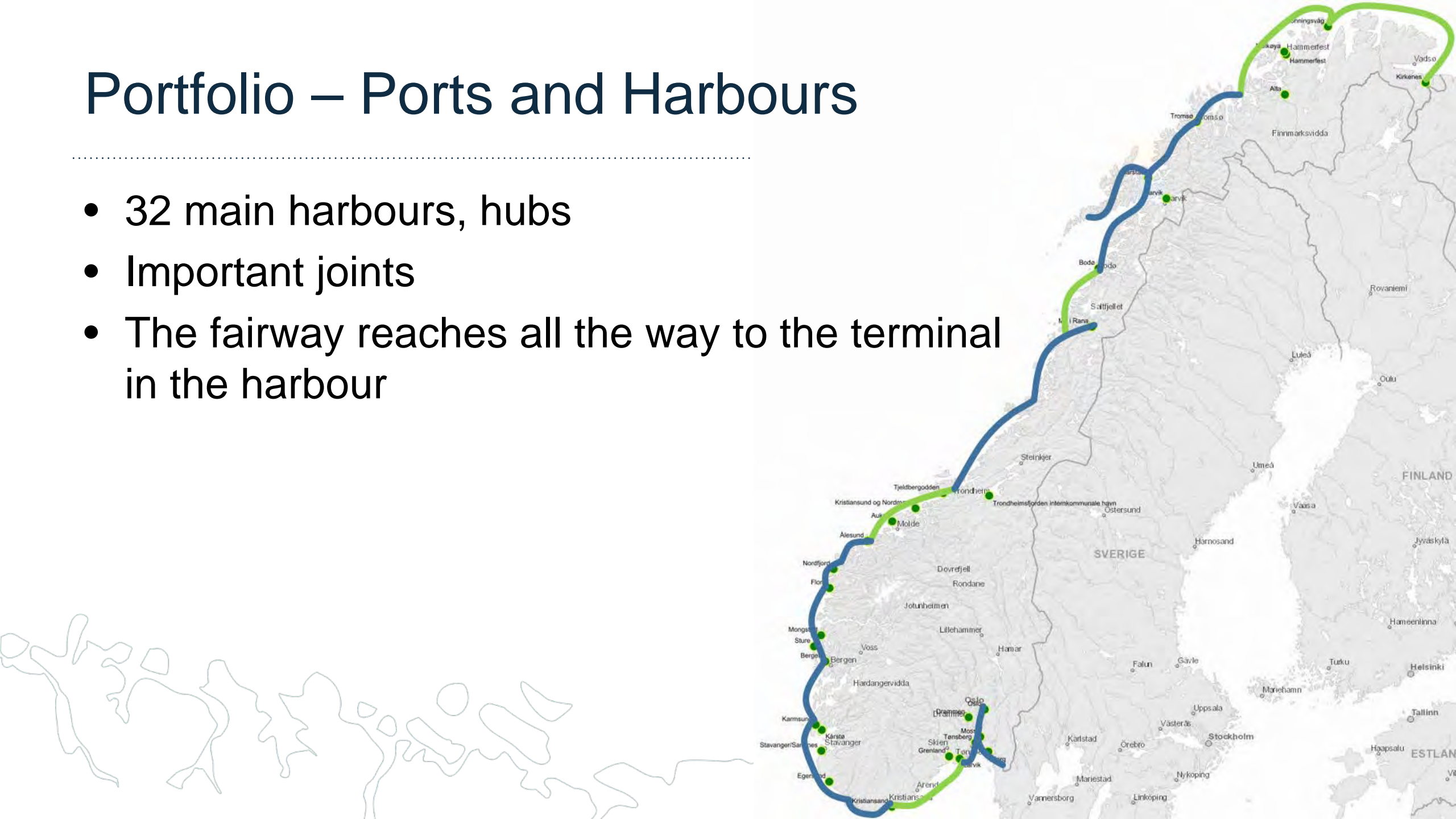
# Portfolio – Ports and Harbours

- 32 main harbours, hubs
- Important joints
- The fairway reaches all the way to the terminal in the harbour



# Portfolio – Ports and Harbours

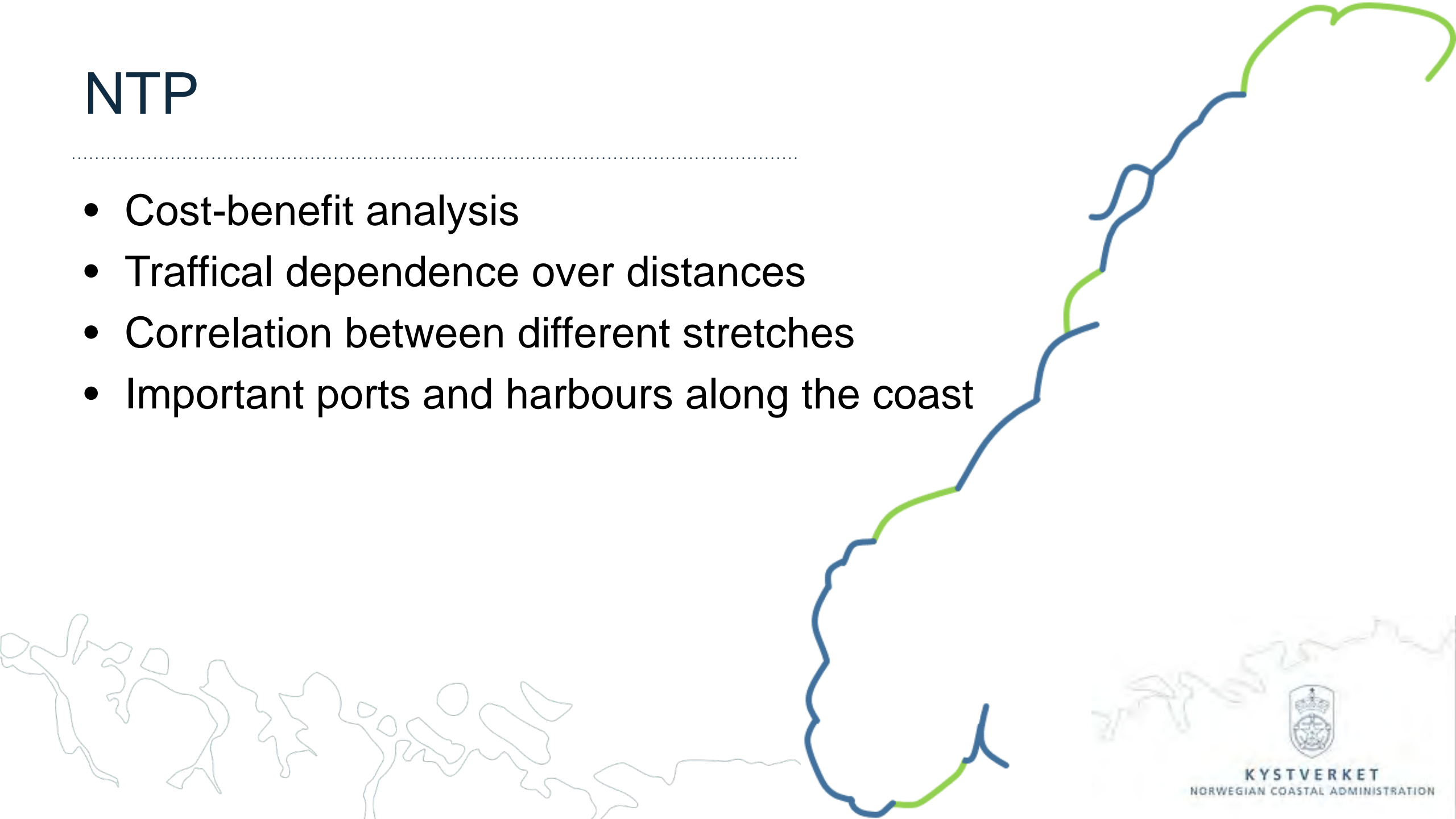
- 32 main harbours, hubs
- Important joints
- The fairway reaches all the way to the terminal in the harbour



# NTP

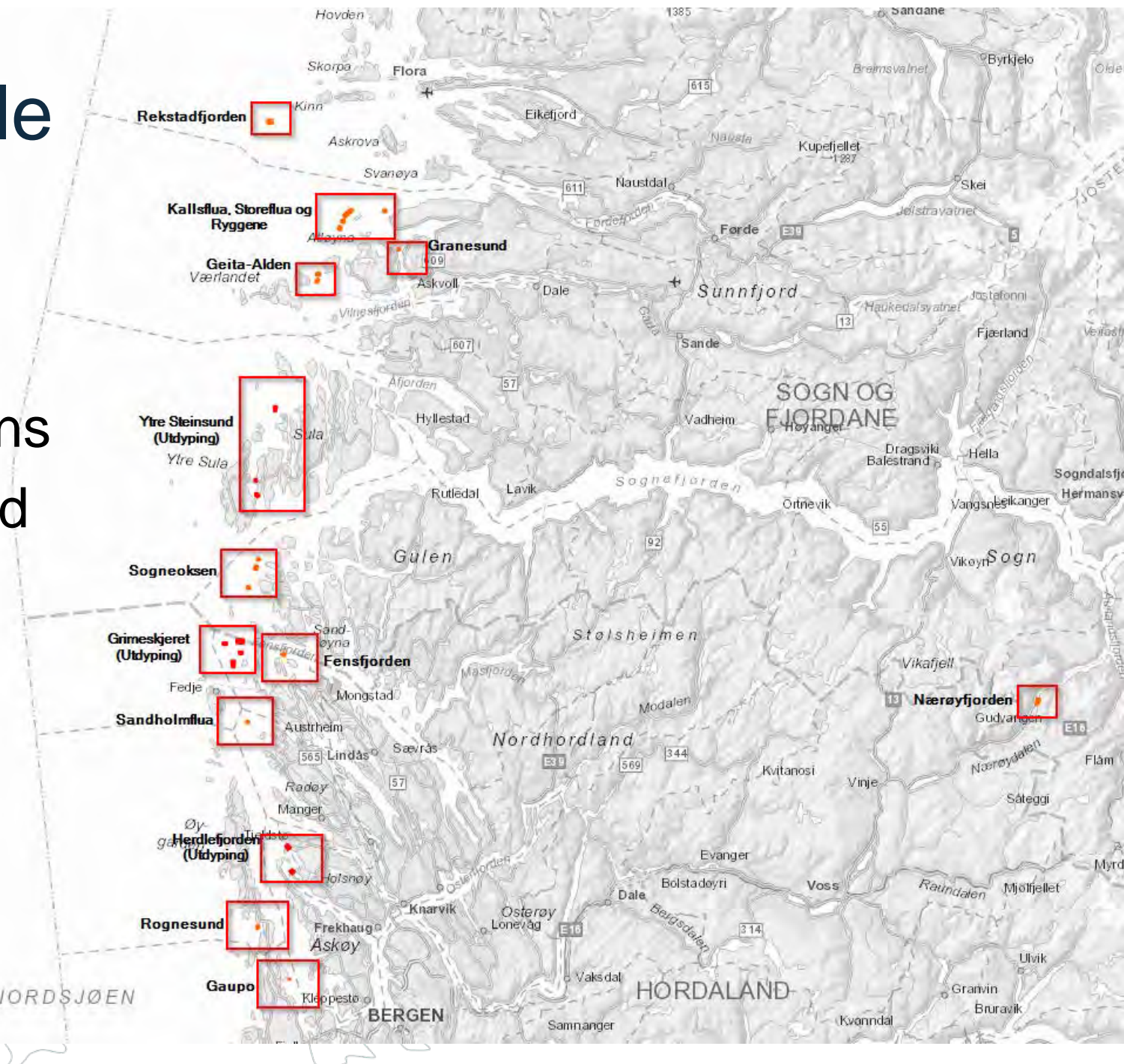
---

- Cost-benefit analysis
- Traffical dependence over distances
- Correlation between different stretches
- Important ports and harbours along the coast

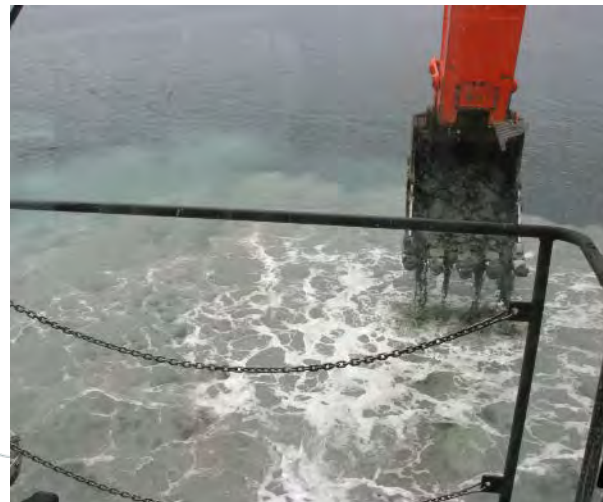
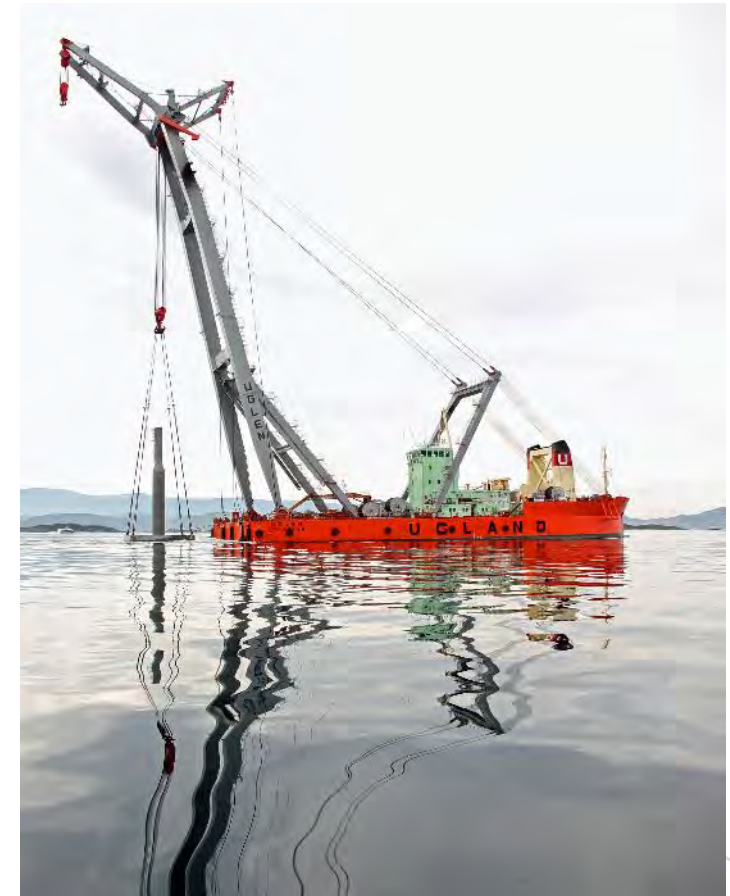


# Stretch – an example

- Bergen – Florø
- Deepening of fairway
- Large nautical installations
- Exposed and unprotected waters



# Works in the fairways





**KYSTVERKET**  
NORWEGIAN COASTAL ADMINISTRATION

---

# CLEAN, SAFE AND EFFICIENT SEAWAYS

---

[www.kystverket.no](http://www.kystverket.no)

