

Hidden Markov models

Jo Eidsvik

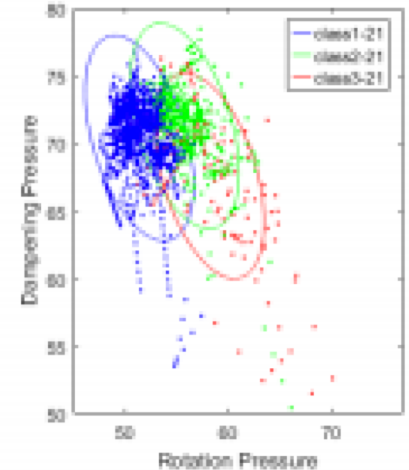
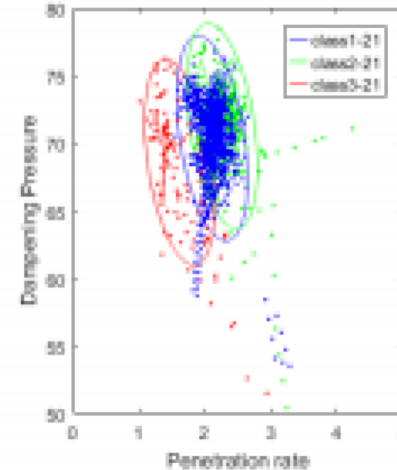
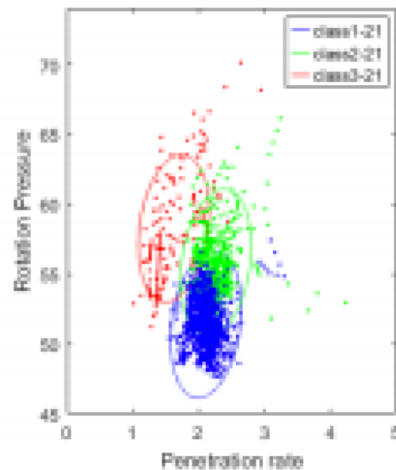
Contents

- Markov models (discrete time and sample space)
- Forward-Backward algorithm
- Example : classification of borehole data
- Related topics: Higher order, Markov random fields, graphs.

Applications

- Rock type classification

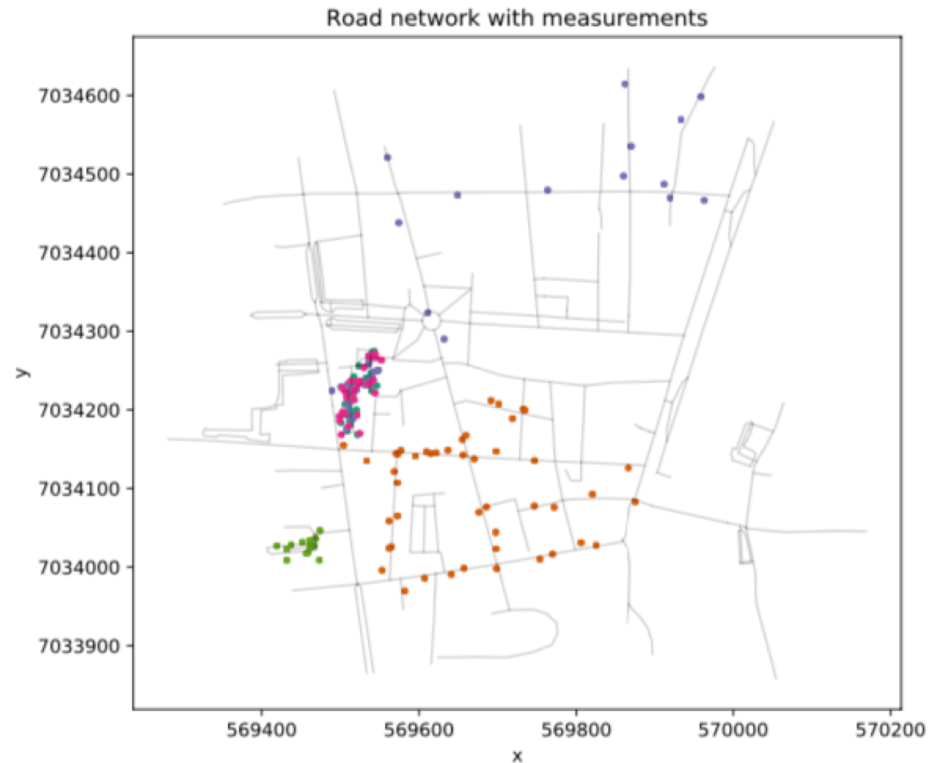
Rig hardness data – what is underlying rock type?



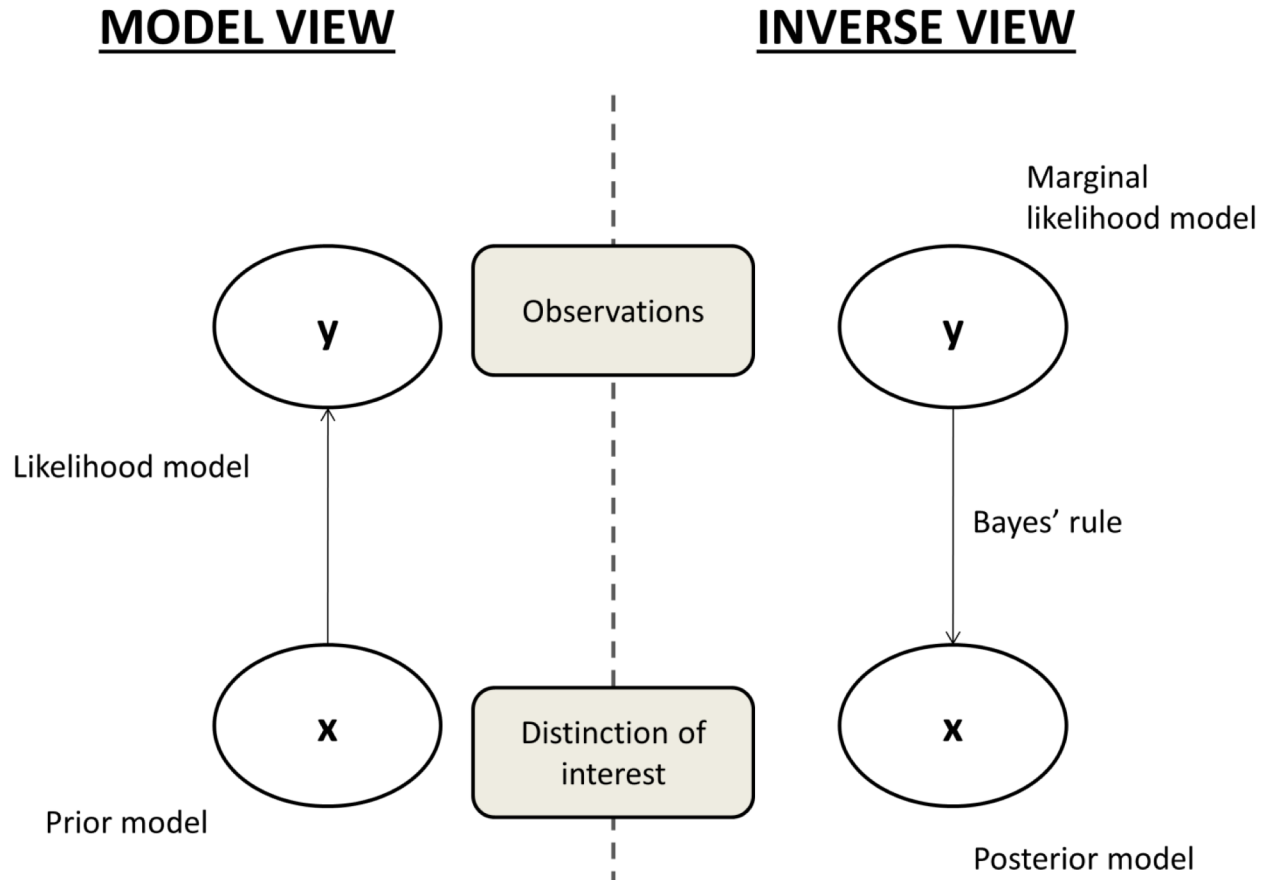
Applications

- Map matching

GPS measurements – what is ‘true’ road segment?

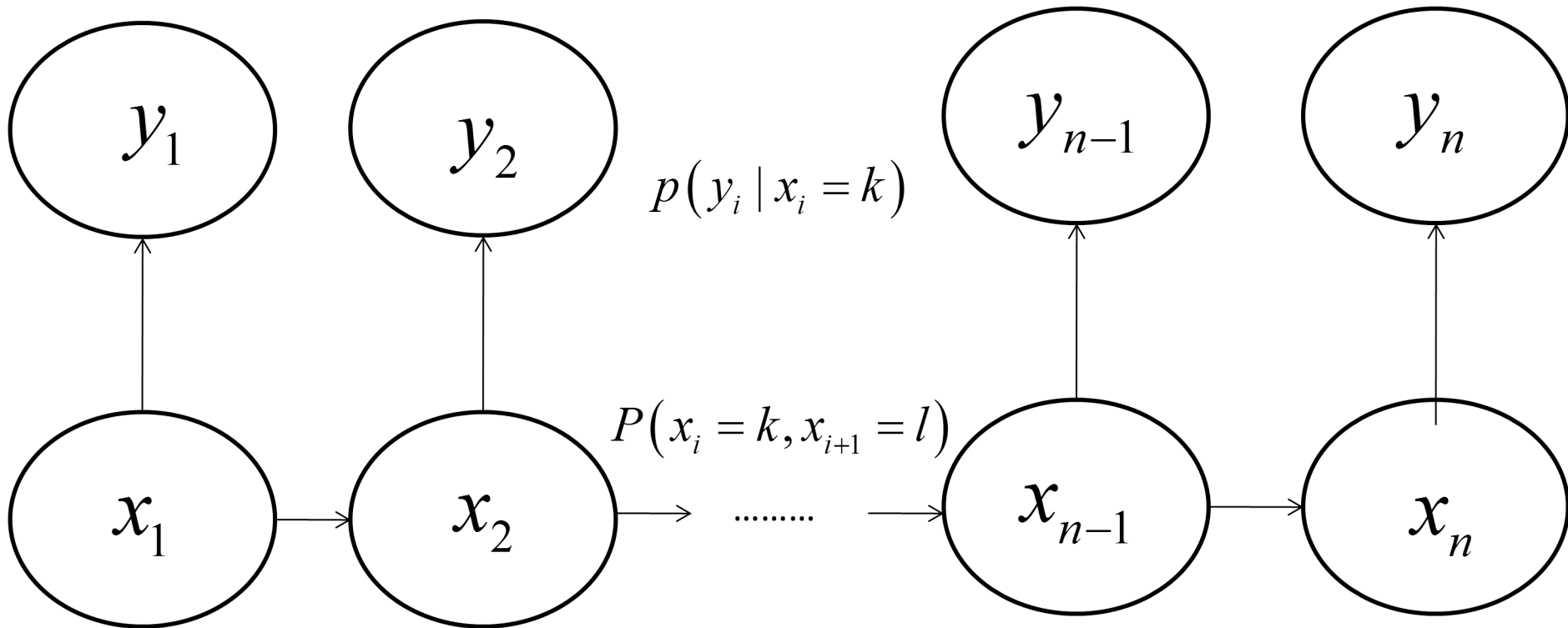


Bayesian inversion



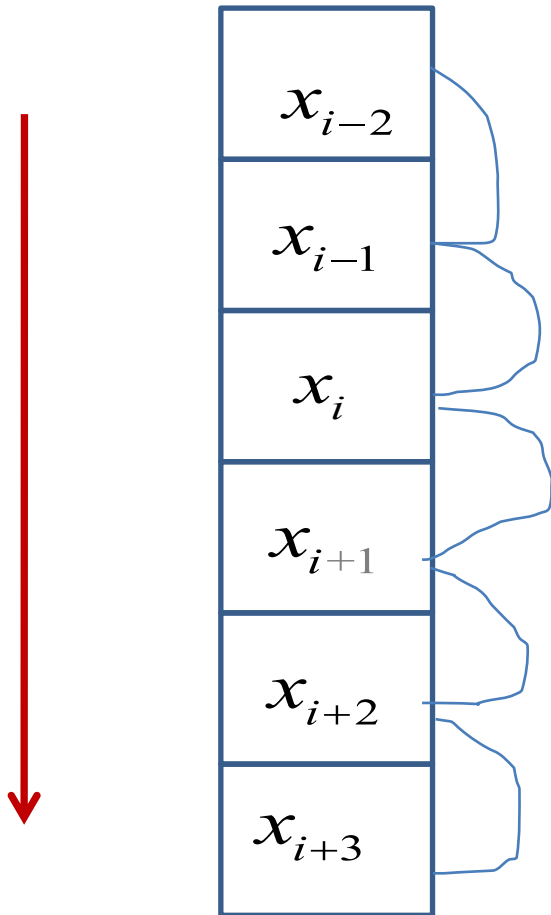
Hidden Markov model (HMM)

Imperfect observations.
Conditionally independent



Latent distinction of interest. Markov chain

Markov chain



$$p(x_i | x_{i-1}, \dots, x_1) = p(x_i | x_{i-1}),$$
$$p(x_1).$$

$$x_i \in \{1, \dots, d\}, i = 1, \dots, n$$

$$\sum_{k=1}^d p(x_i = k | x_{i-1}) = 1$$

All dependence from the past is inherited through the previous state.

Markov transition matrix

- $d=2$

	1	2
1	p	$1-p$
2	$1-q$	q

$$p(x_i = 1 \mid x_{i-1} = 1) = p,$$

$$p(x_i = 2 \mid x_{i-1} = 2) = q$$

Markov chains

- Stationary, $p=q$, $p=0.9$ (left), $p=0.5$ (middle), $p=0.1$ (right).

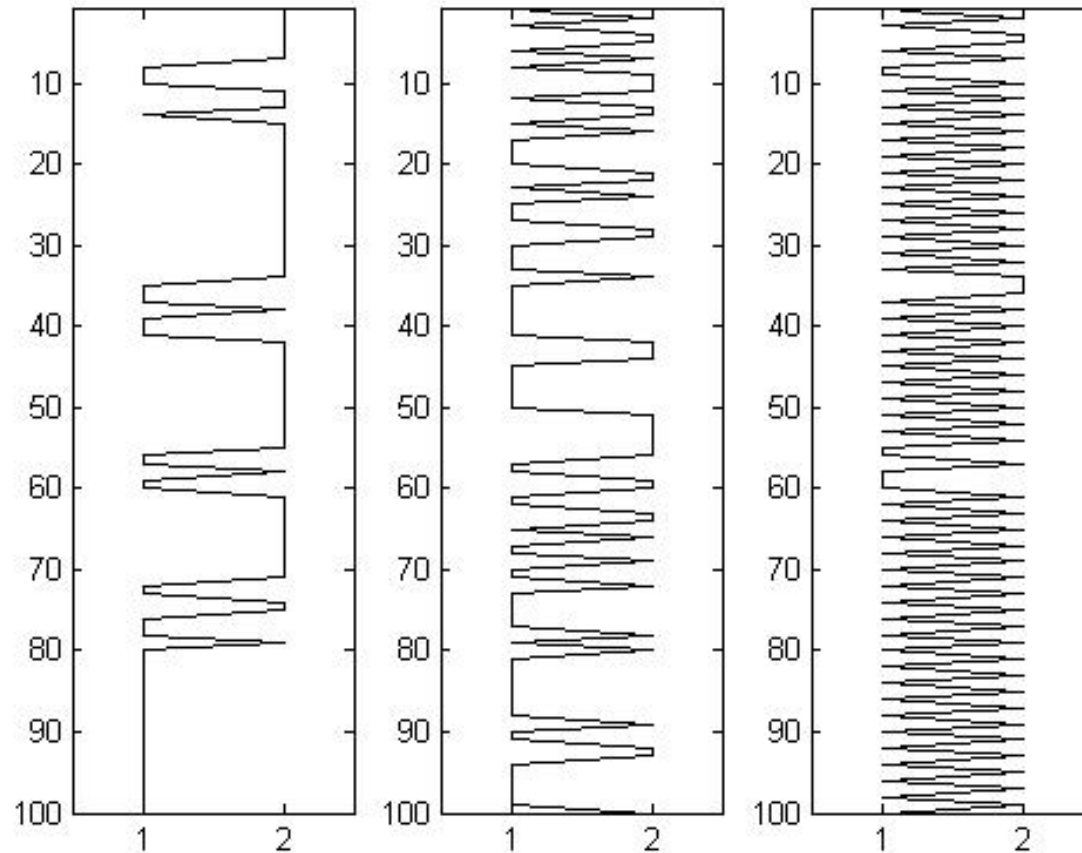
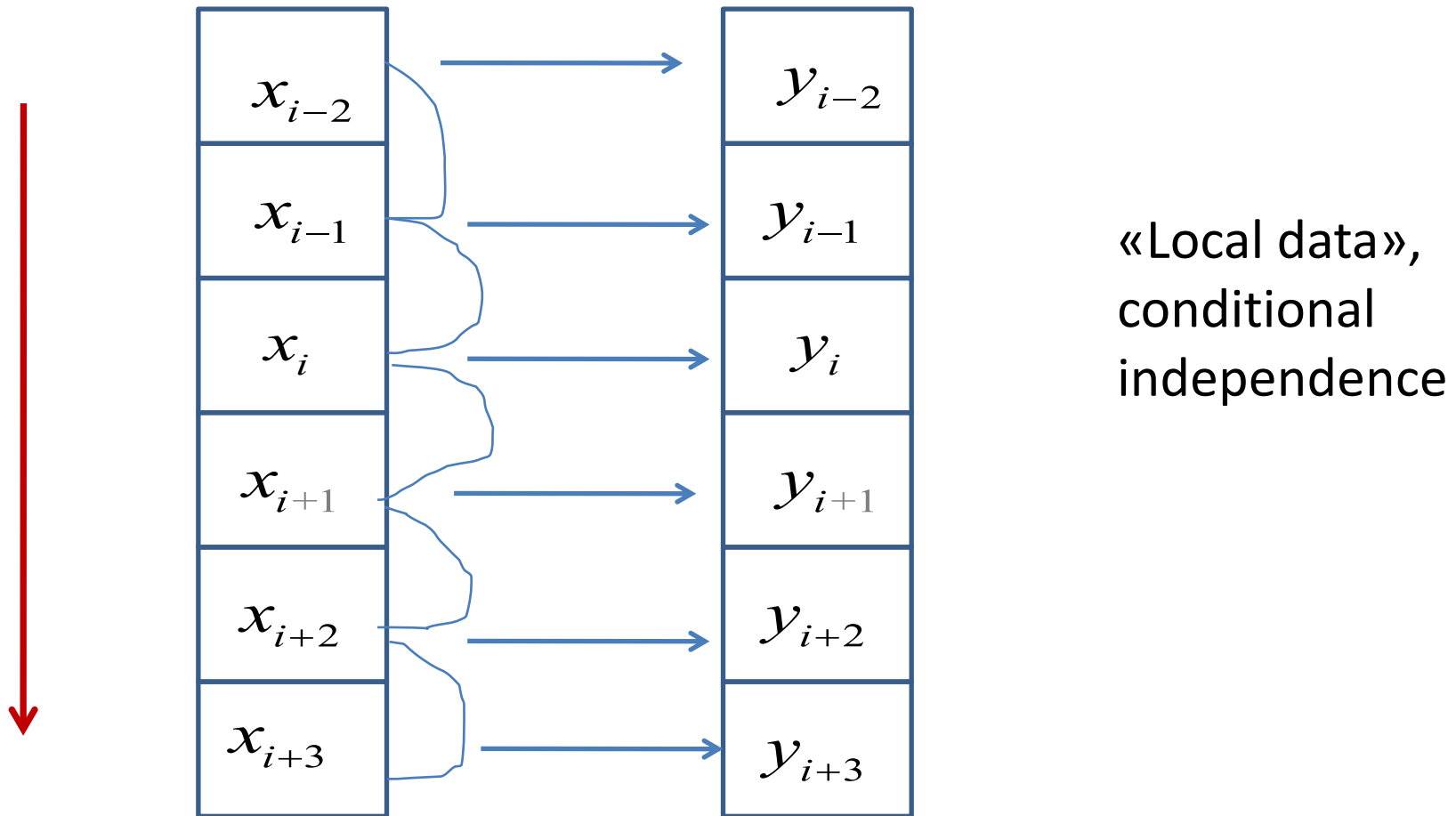


Illustration of Hidden Markov model



Hidden Markov models

$$p(x_i | x_{i-1}, \dots, x_1) = p(x_i | x_{i-1}),$$

$$p(x_1)$$

$$x_i \in \{1, \dots, d\}, i = 1, \dots, n,$$

$$p(y_i | x_i)$$

Data can be discrete or continuous.

Distinction of interest is discrete and Markovian.

HMM: Inference and prediction

Main goal is likelihood evaluation, marginal posterior probabilities or posterior realizations

$$p(y_1, \dots, y_n) = p_{\theta}(y_1, \dots, y_n)$$

$$p(x_i = k \mid y_1, \dots, y_n), k = \{1, \dots, d\}, i = \{1, \dots, n\},$$

$$\mathbf{x} = (x_1, \dots, x_n) \sim p(\mathbf{x} \mid y_1, \dots, y_n)$$

Forward-Backward algorithm

Forward recursion:

$$p(x_i | y_1, \dots, y_{i-1}) = \sum_{k=1}^d p(x_i | x_{i-1} = k) p(x_{i-1} = k | y_1, \dots, y_{i-1})$$

$$p(x_i = k | y_1, \dots, y_i) = \frac{p(y_i | x_i = k) p(x_i = k | y_1, \dots, y_{i-1})}{p(y_i | y_1, \dots, y_{i-1})}$$

Forward-Backward algorithm

Sequential likelihood:

$$p(y_i | y_1, \dots, y_{i-1}) = \sum_{k=1}^d p(y_i | x_i = k) p(x_i = k | y_1, \dots, y_{i-1})$$

$$p(y_1, \dots, y_i) = p(y_i | y_1, \dots, y_{i-1}) p(y_1, \dots, y_{i-1})$$

$$p(y_1, \dots, y_n) = p_{\theta}(y_1, \dots, y_n)$$



Last step of forward run.

Forward-Backward algorithm

Backward recursion:

1. By end of forward:

$$p(x_n = k \mid y_1, \dots, y_n)$$

2. Stepping back:

$$p(x_i = k \mid y_1, \dots, y_n), i = n - 1, \dots, 1$$

Forward-Backward algorithm

Backward recursion:

$$p(x_i = k | y_1, \dots, y_n) = \sum_{l=1}^d p(x_i = k | y_1, \dots, y_{i+1}, x_{i+1} = l) p(x_{i+1} = l | y_1, \dots, y_n)$$

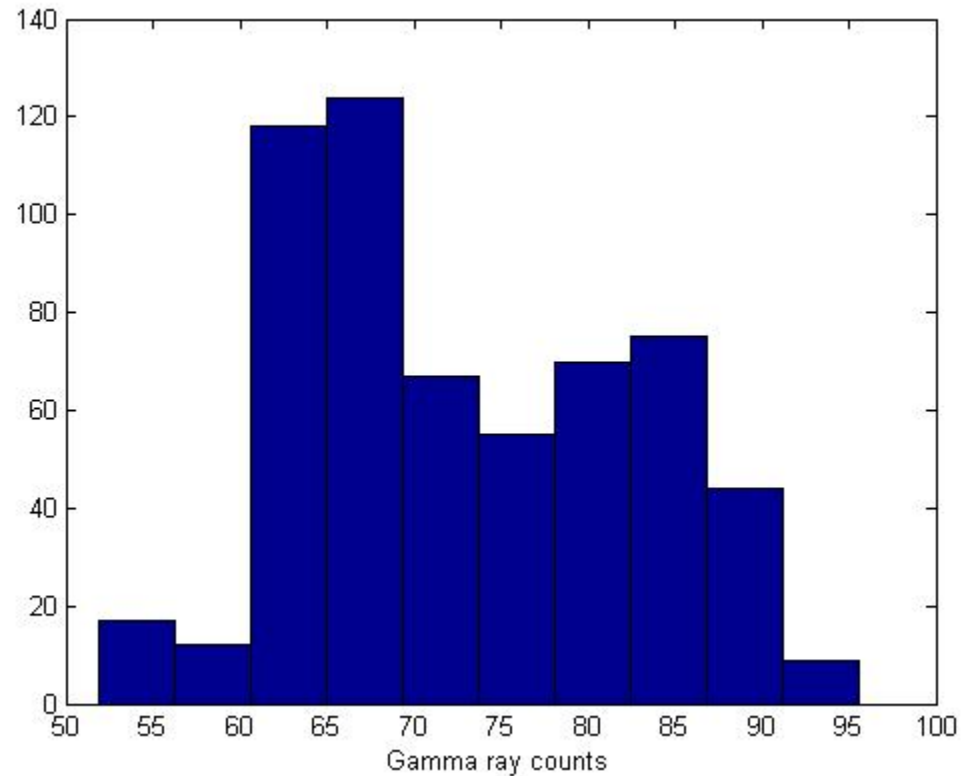
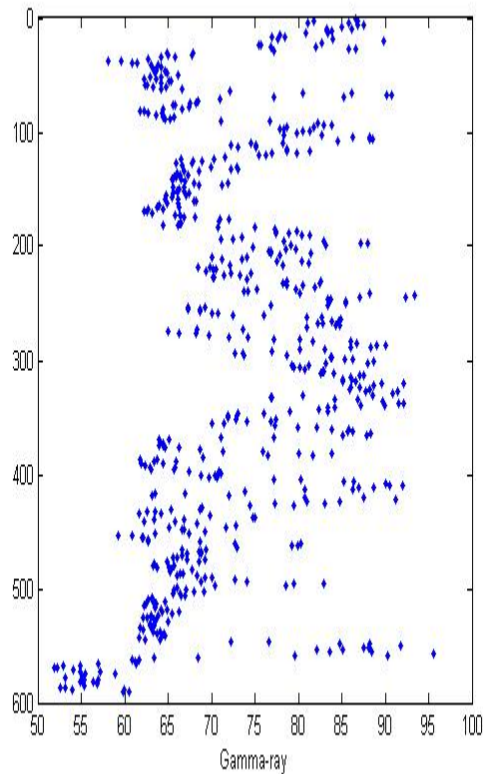
$$\begin{aligned} p(x_i = k | y_1, \dots, y_{i+1}, x_{i+1}) &= \frac{p(x_i = k, x_{i+1}, y_{i+1} | y_1, \dots, y_i)}{p(y_{i+1} | x_{i+1}, y_1, \dots, y_i) p(x_{i+1} | y_1, \dots, y_i)} \\ &= \frac{p(x_{i+1} | x_i = k) p(x_i = k | y_1, \dots, y_i)}{p(x_{i+1} | y_1, \dots, y_i)}. \end{aligned}$$

Forward-Backward algorithm

- Useful in applied statistics:
 - Likelihood modeled from measurement accuracy, using discipline-specific knowledge.
 - Prior modeled from a priori understanding.
- Fast
 - Order $O(nd^2)$ calculations.

Example: Hidden Markov models

- Gamma ray information in borehole.



Hidden Markov models

- Latent rock type is sand or shale (at every depth). Goal is to classify rock type, given gamma-ray counts and Markovian dependence in the rock types.

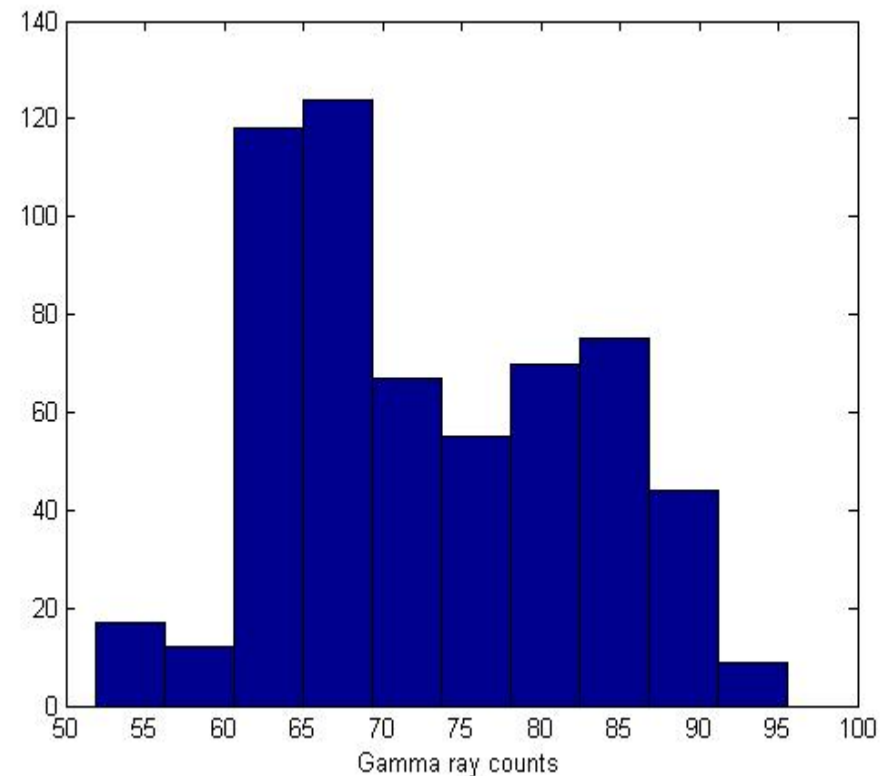
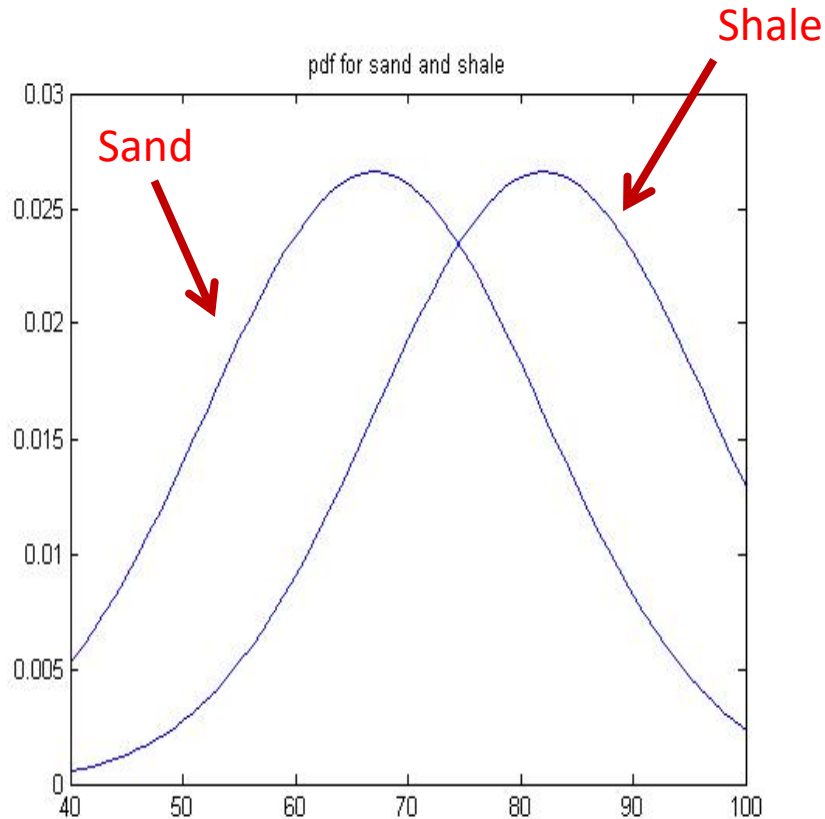
$$p(x_i | x_{i-1}, \dots, x_1) = p(x_i = k | x_{i-1} = k) = 0.9,$$

$$x_i \in \{1, 2\},$$

$$p(y_i | x_i = k) = N(\mu_k, \sigma_k^2)$$

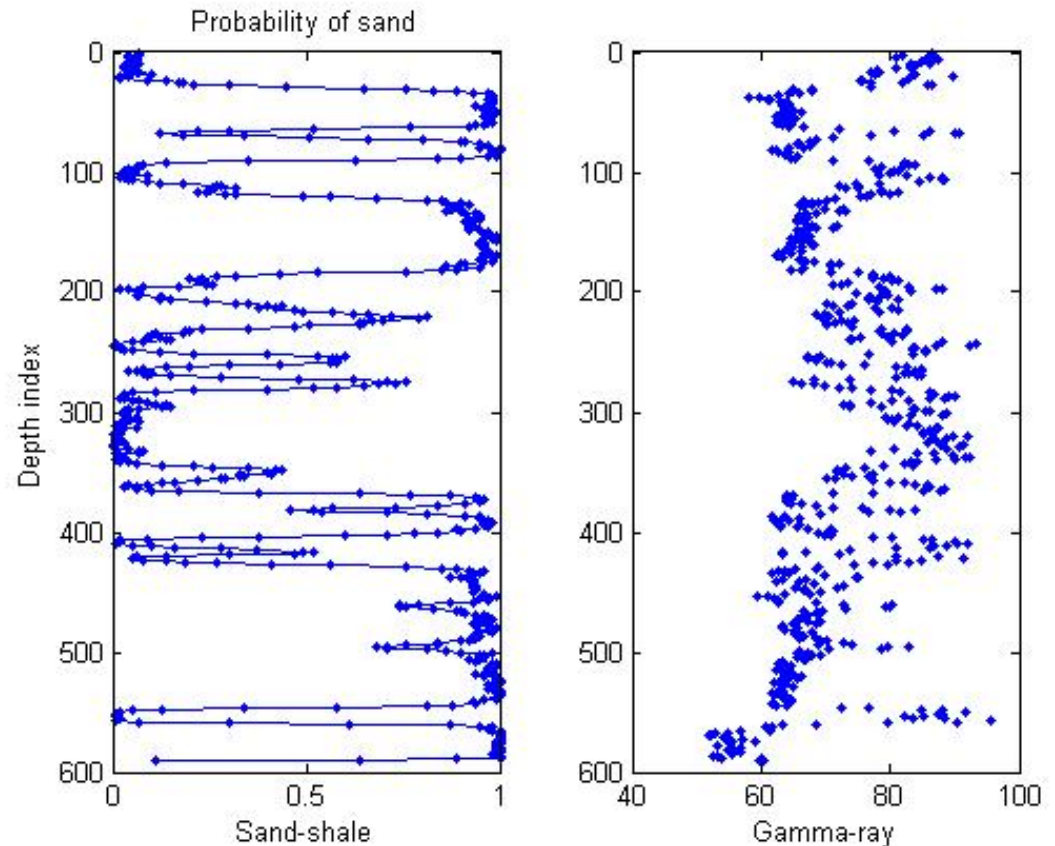
Likelihood of gamma-ray data

- Sand (smaller counts) and shale (higher counts).



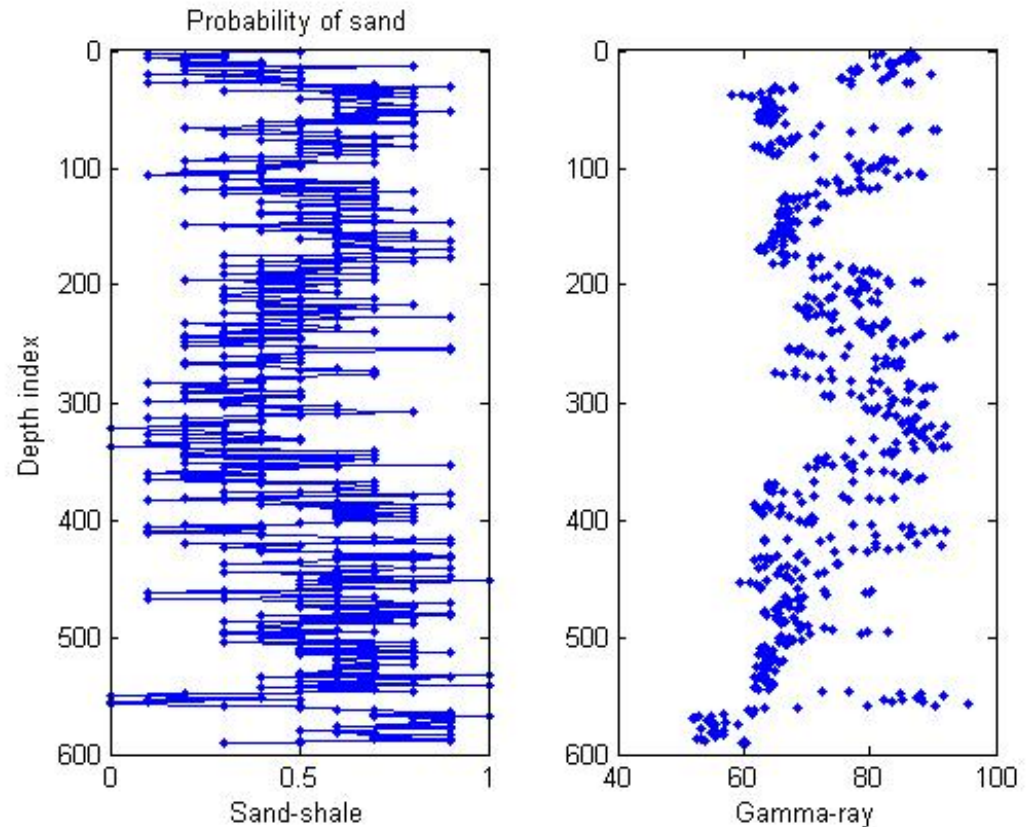
Result 1: Hidden Markov models

- Probability of sand (at every depth) using gamma ray information, and Markovian prior.

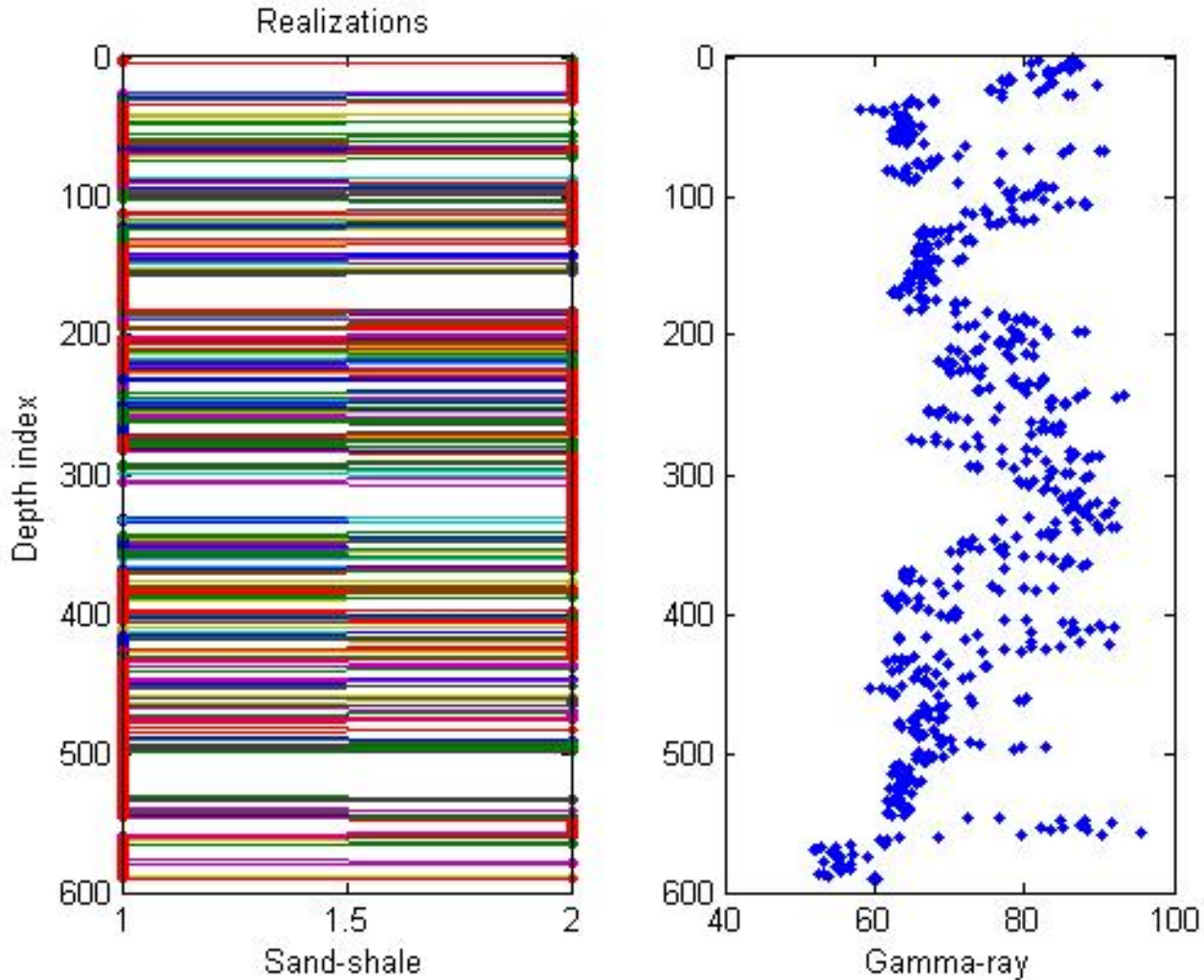


Result 2: Hidden Markov models

- Probability of sand (depth by depth) using only likelihood, and *no dependence* in prior.

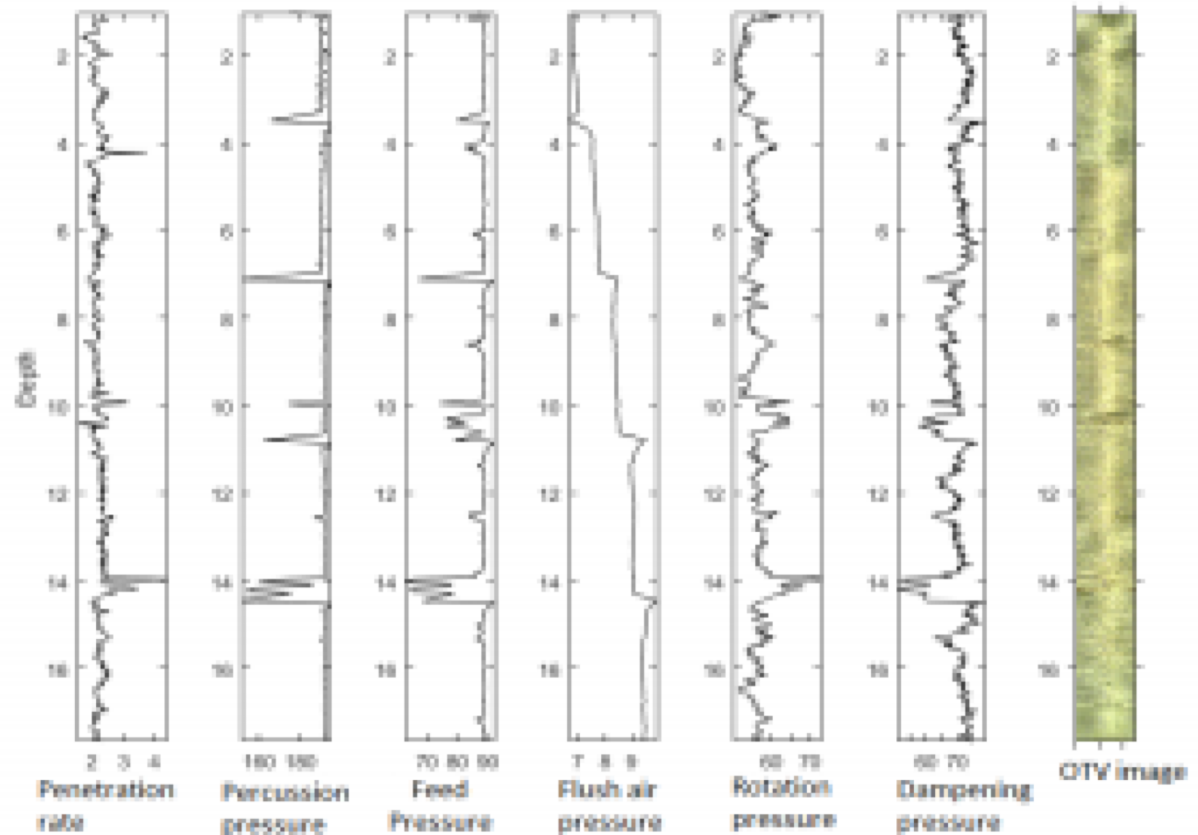


Samples of sand/shale, given gamma ray information

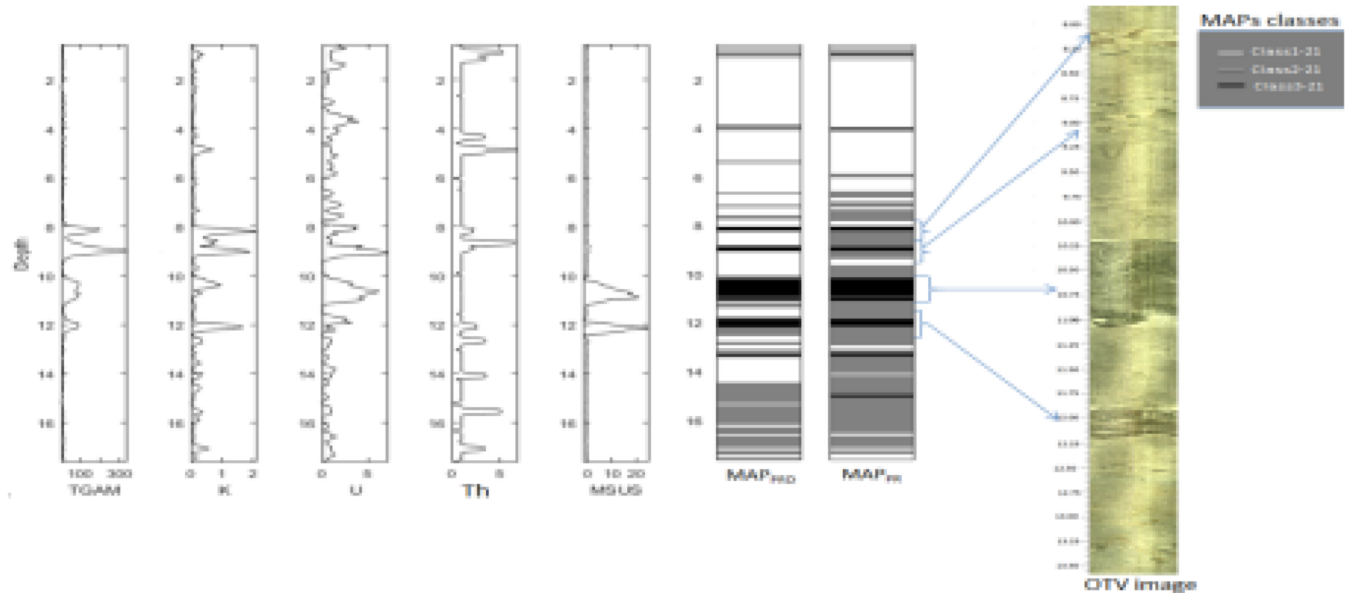
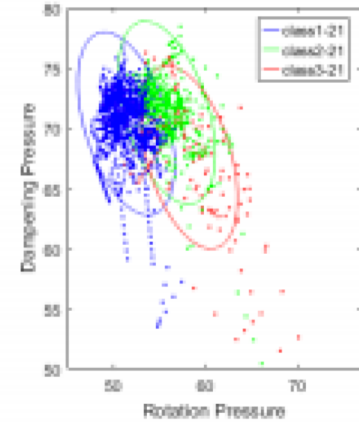
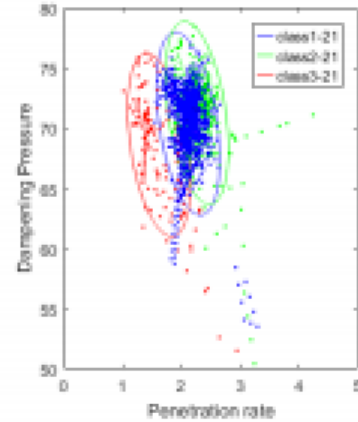
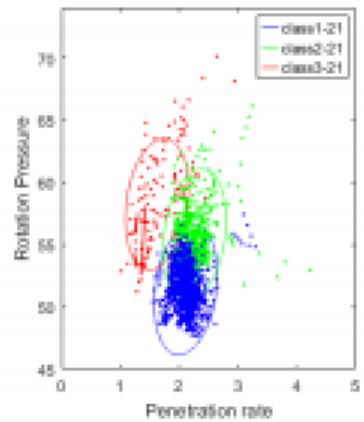


Applications

- Rock type classification from hardness data

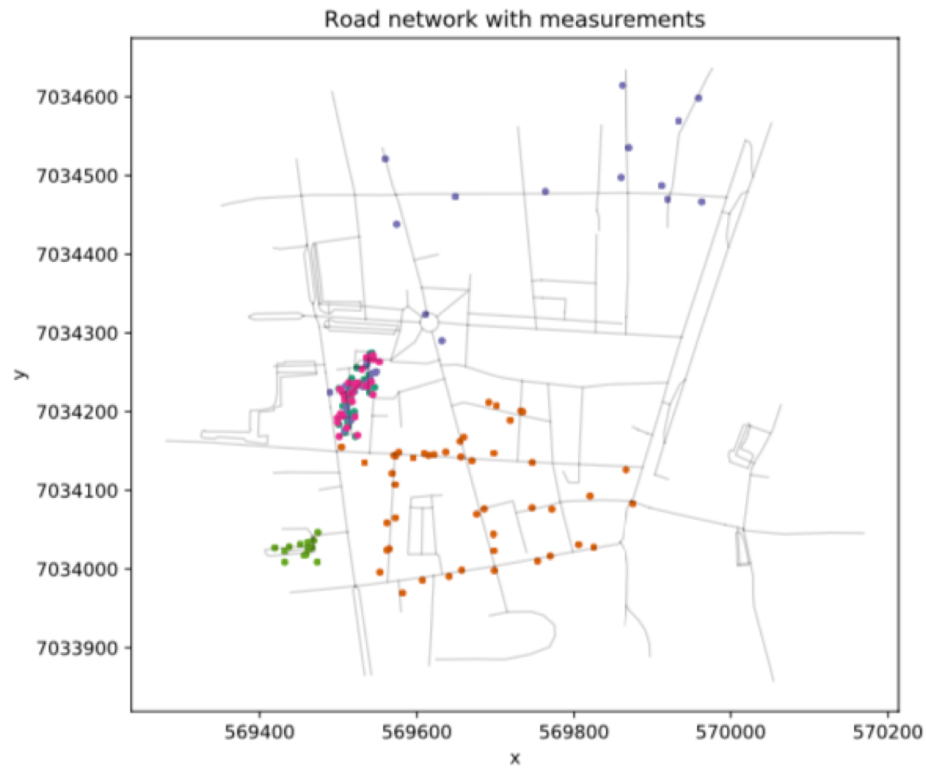


Applications



Applications

- Map matching

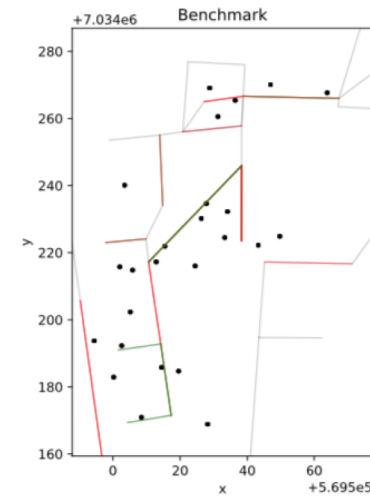


Applications

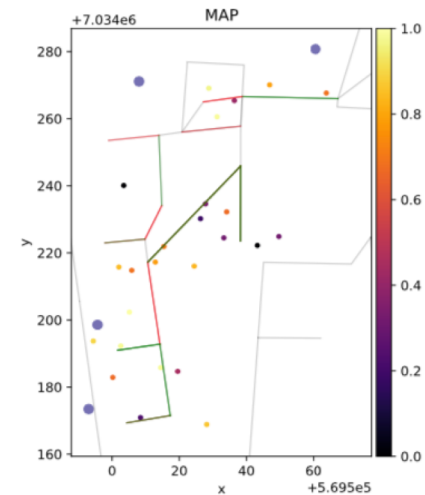
- Map matching

Borrow information to improve prediction.

Better than simply using nearest road segment



(a) BM estimate for measurement with 25% missing GPS - measurements and presence of signal sources.

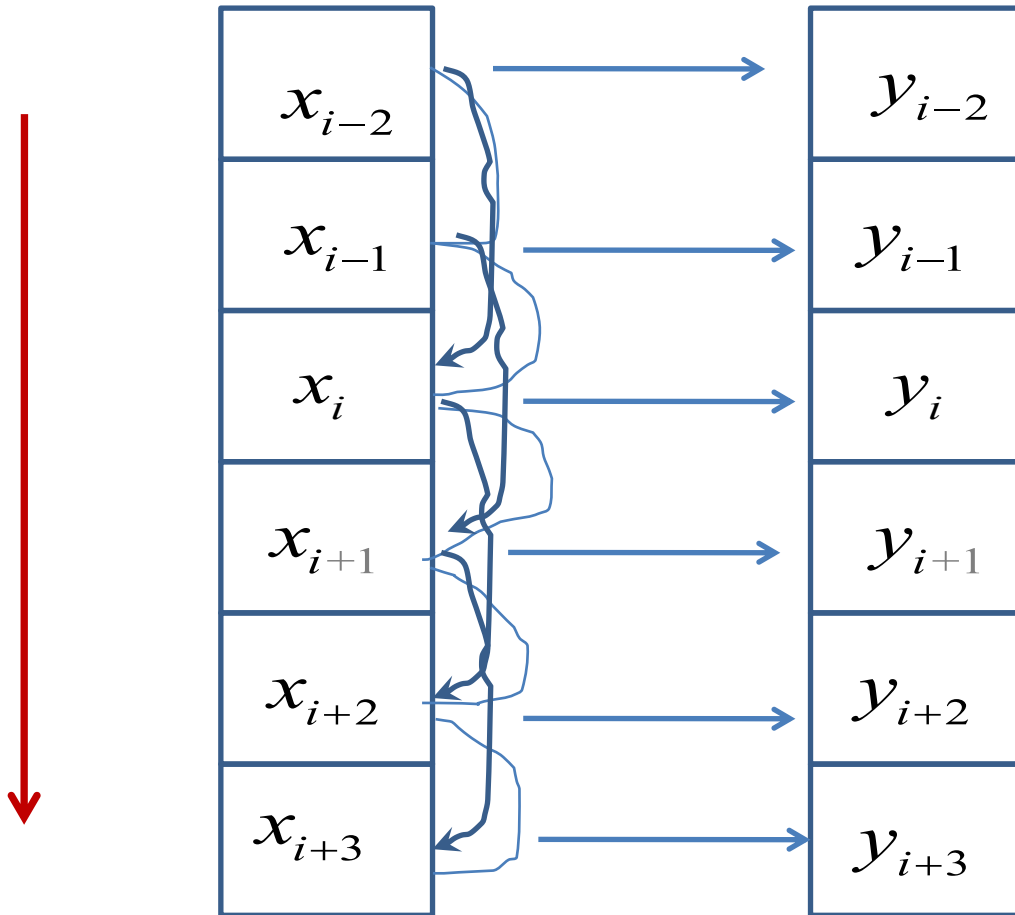


(b) MAP-estimate with $\sigma = 1$ and $\gamma = 1/100$ for measurement with 25% missing GPS - measurements and presence of signal sources.

Related topics:

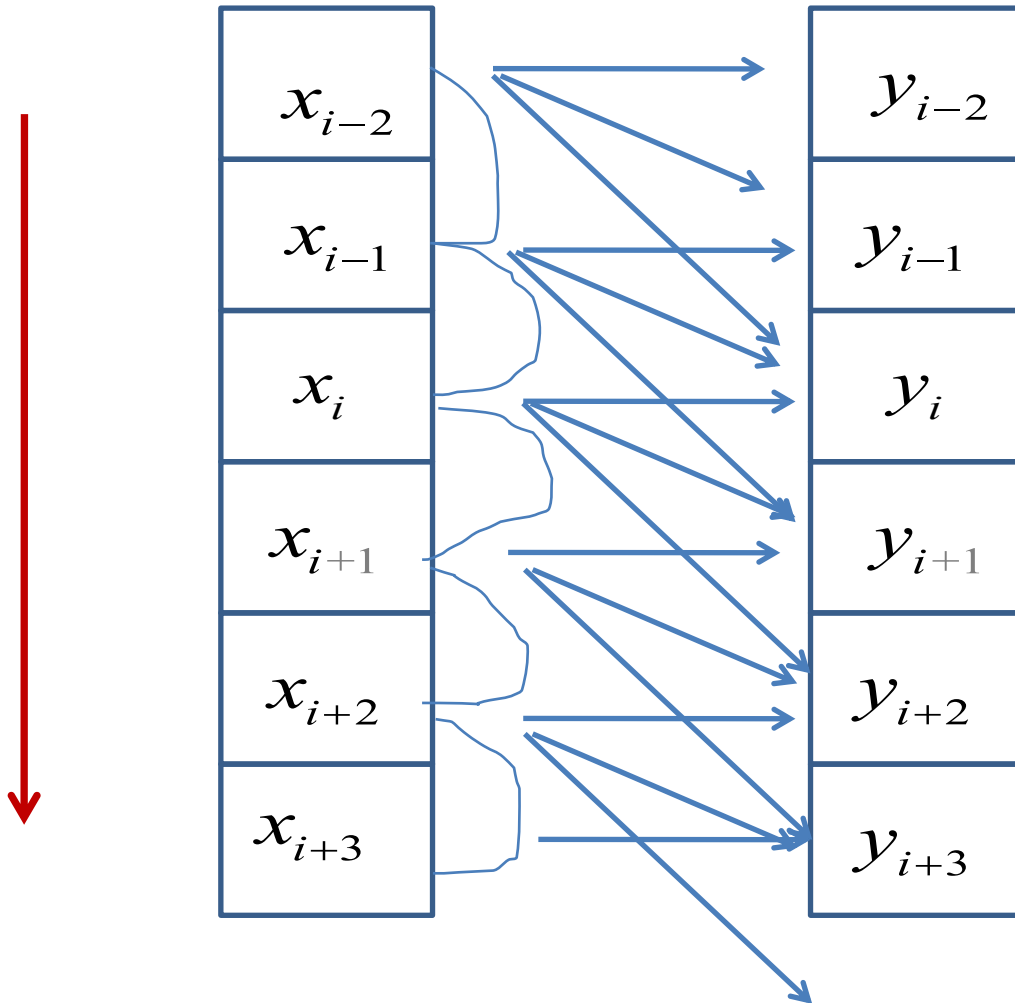
- Higher order Markov chains, coupling in the likelihood
- Markov random fields
- Graphical models
- Sequential updating

Higher-order models



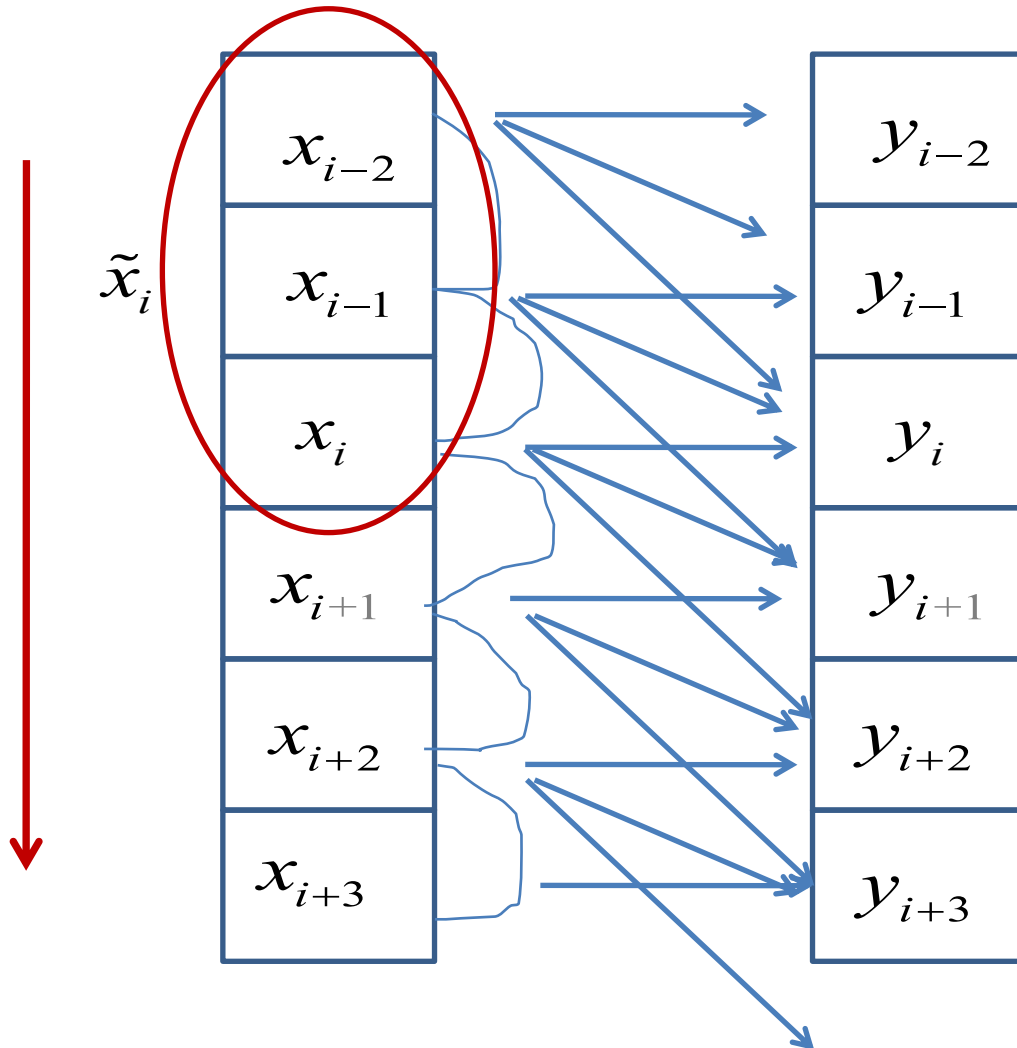
Higher-order
dependence in
latent model.

Higher-order models



«Convolved data»,
no longer
conditional
independence

Higher-order models



Introduce augmented variable.

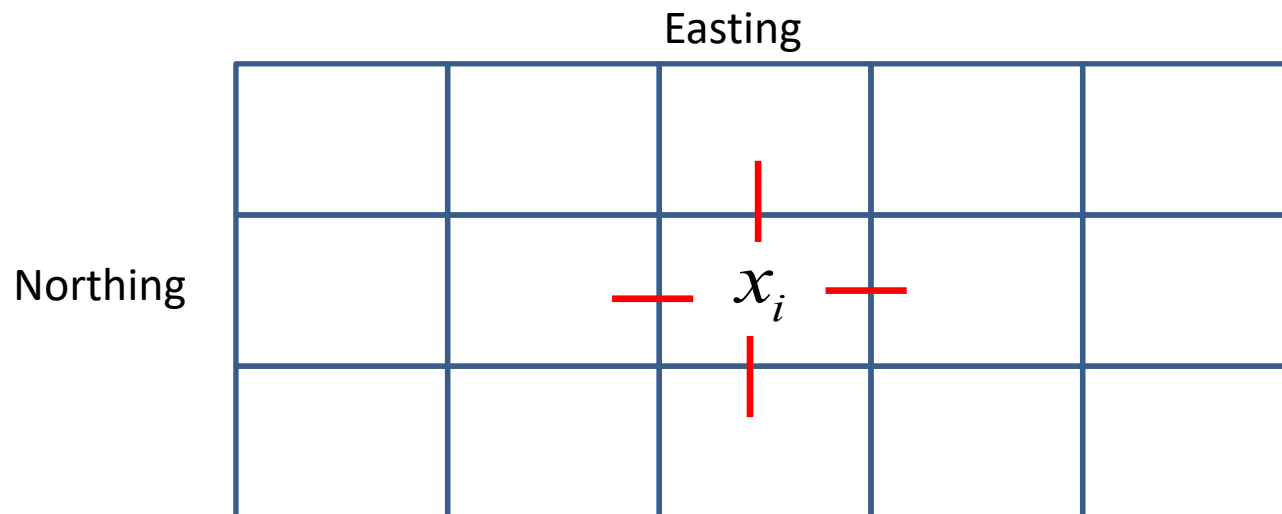
Usual Markov model for the augmented state space.

Challenge:

$$O(nd^2)$$

Markov random fields

First order Markov random field: 4 neighbors.



Markov random fields

Full conditional distribution depends only on neighbors.

$$p(x_i | x_{-i}) = p(x_i | x_j; j \in N_i),$$

$$x_i \in \{1, \dots, d\}, i = 1, \dots, n = n_1 n_2$$

n_1 North grid dimension

n_2 East grid dimension

Markov random fields

Equivalent formulation using joint distribution
(Hammersley-Clifford theorem):

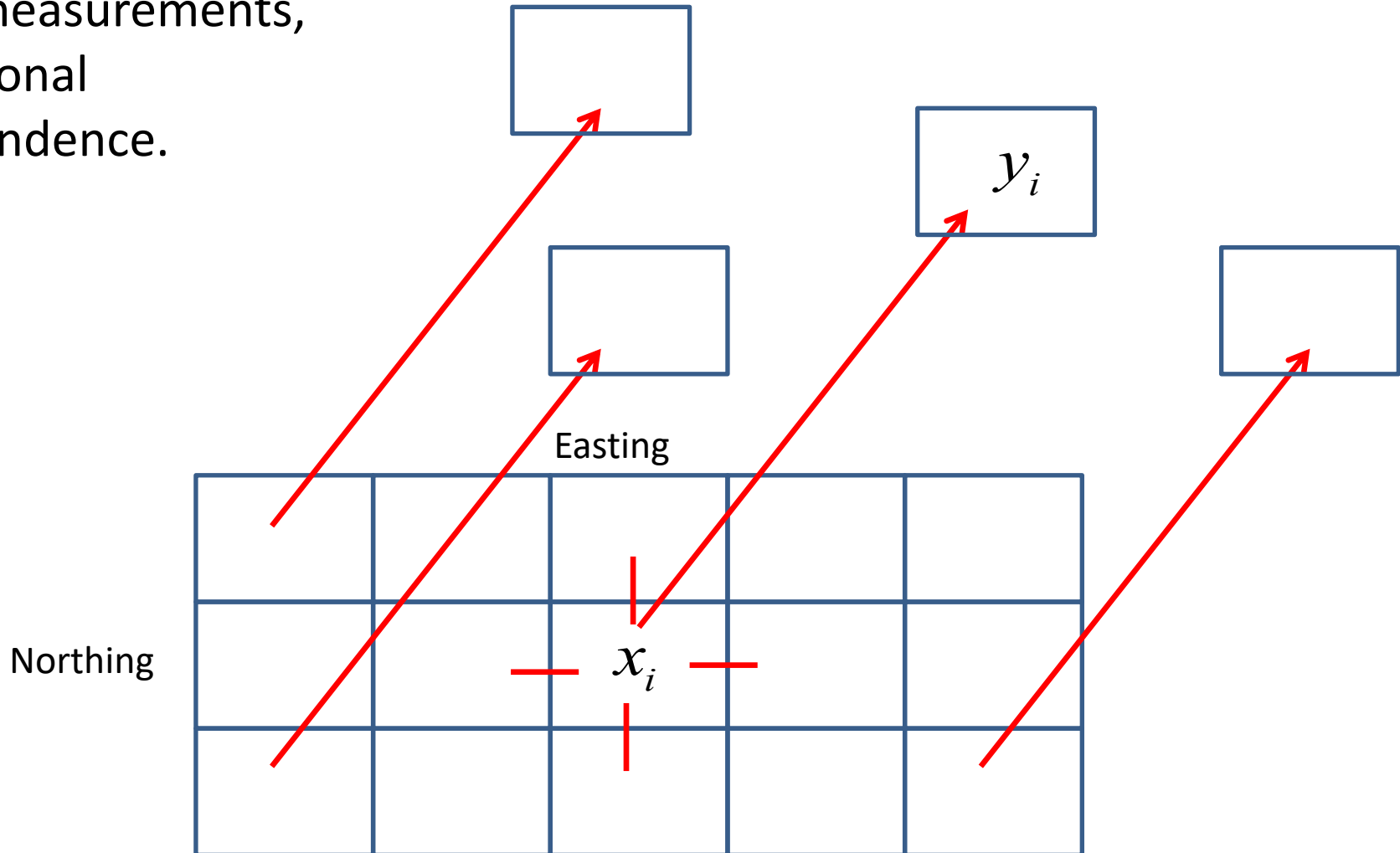
$$p(x_1, \dots, x_n) = c \exp \left(\beta \sum_{i \sim j} I[x_i = x_j] \right),$$

i, j neighbors on the grid

$$c = \sum_{x_1=1}^d \dots \sum_{x_n=1}^d \exp \left(\beta \sum_{i \sim j} I[x_i = x_j] \right)$$

Hidden Markov random fields

Local measurements,
conditional
independence.



Hidden Markov random fields

$$p(x_i = k \mid x_{-i}) = p(x_i = k \mid x_j; j \in N_i)$$

$$p(y_i \mid x_i), i = 1, \dots, n$$

Data can be continuous or discrete. Latent variable is discrete.

Hidden Markov random fields

Main goal: posterior marginal probabilities or realizations

$$p(x_i | y_1, \dots, y_n), k = \{1, \dots, d\}, i = \{1, \dots, n\},$$

$$\mathbf{x} = (x_1, \dots, x_n) \sim p(\mathbf{x} | y_1, \dots, y_n)$$

*For small grids, the forward-backward algorithm still works.
For large grids we use approximations or we use MCMC.*

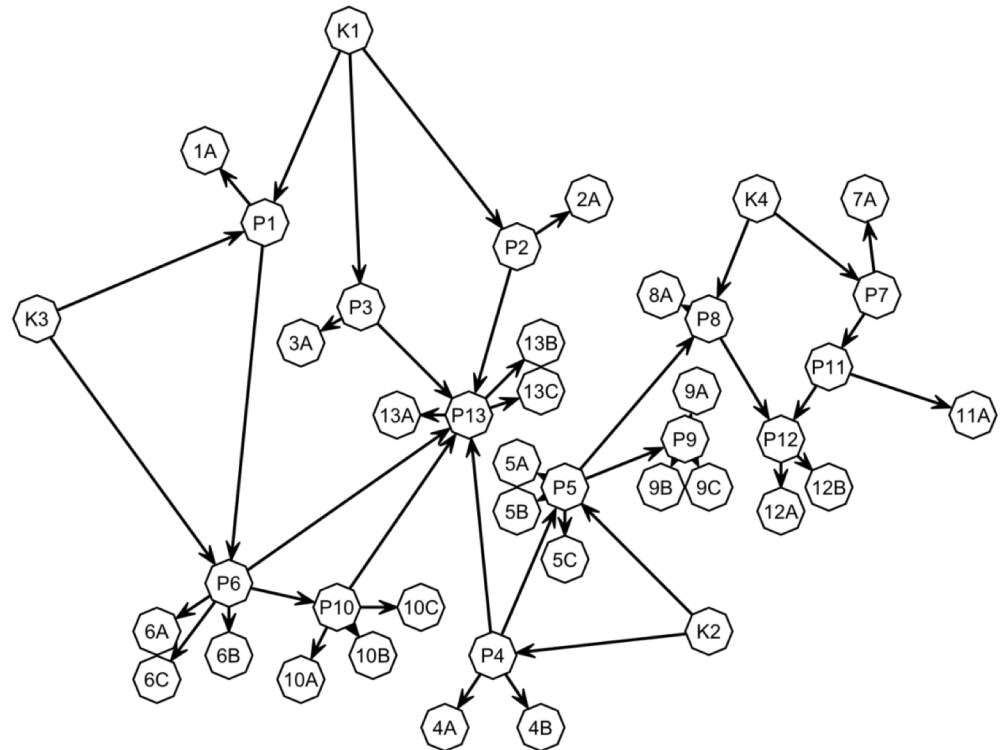
Conditional modeling (graphs)

$$p(x_1, x_2) = p(x_1)p(x_2 | x_1),$$

$$p(x_1, x_2) = p(x_2)p(x_1 | x_2)$$

$$p(x_2) = \sum_{x_1} p(x_1, x_2)$$

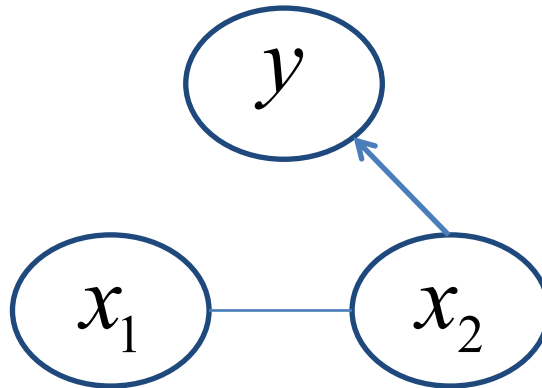
$$p(x_1 | x_2) = \frac{p(x_1, x_2)}{p(x_2)}$$



Smart ordering of variables

$$p(x_1, x_2 | y) = p(x_2 | y)p(x_1 | x_2, y),$$

$$p(x_1, x_2 | y) = p(x_2 | y)p(x_1 | x_2)$$



Project HMM

- Simulate a Markov chain and data, with known parameters.
- Run forward algorithm and fit maximum likelihood estimates from data.
- Run forward-backward algorithm and do marginal predictions and joint sampling, given parameter estimates.
- Do predictions using the data alone, without any dependence in the latent class variables.